

FOR LEASE
THE CARPENTER BUILDING

HISTORIC BUILDING.
AMENITIES.
DOWNTOWN.
ACCESS.

331 South Rio Grande

Salt Lake City, Utah



CUSHMAN &
WAKEFIELD



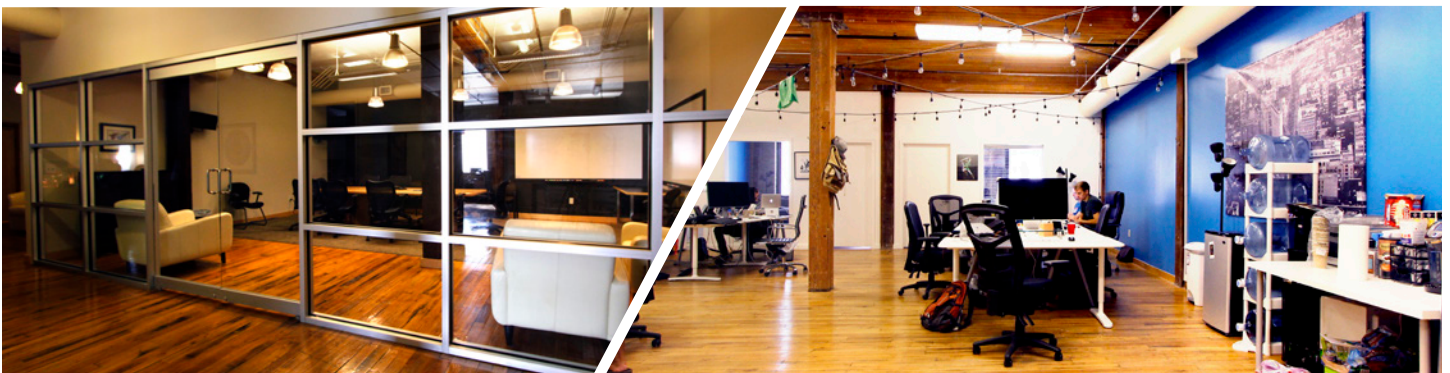
Unique **historic** building with **contemporary** freeway access, and **walkable distance**



LEASE RATE: \$17.50/RSF, FULL SERVICE
3,356 RSF AVAILABLE

PROPERTY HIGHLIGHTS:

- Easy I-15 access
- Close proximity to downtown & many great amenities
- Walking distance to TRAX
- Secured bike storage
- Under new management



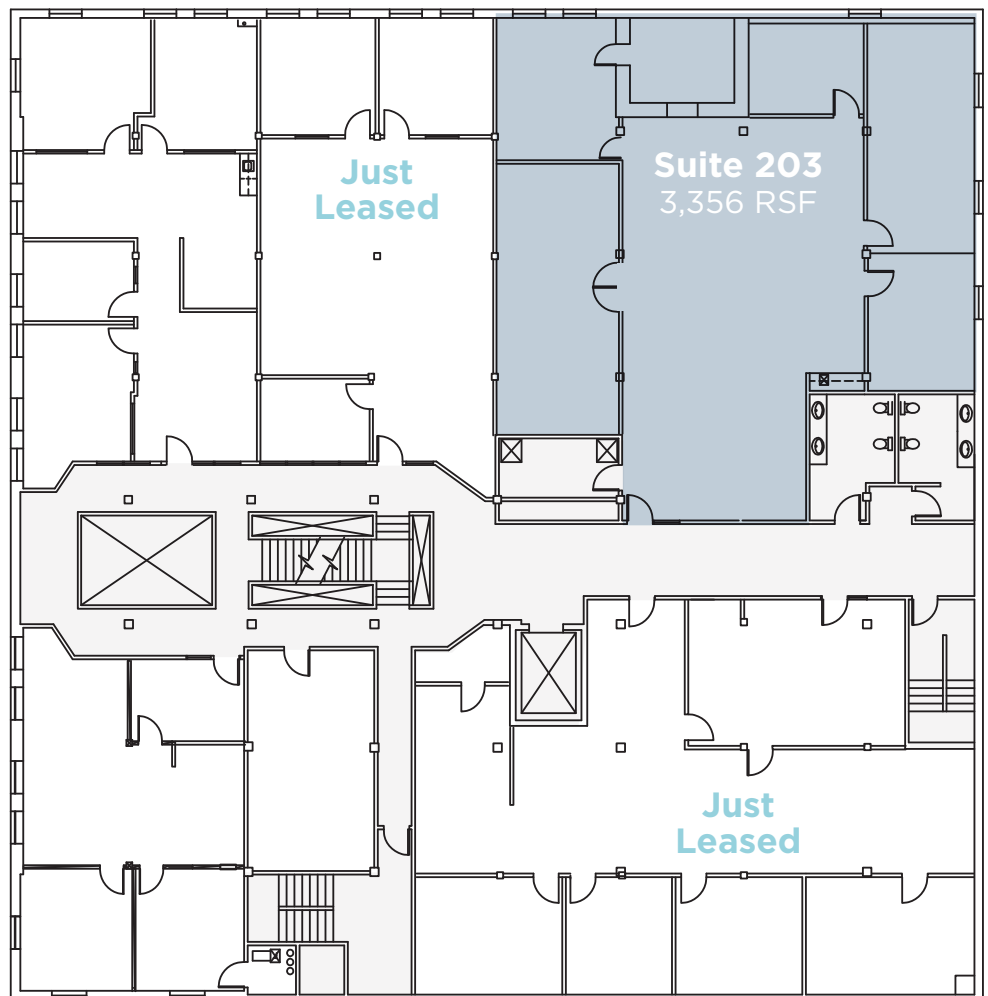
rary design, great
to local amenities.

SECOND FLOOR

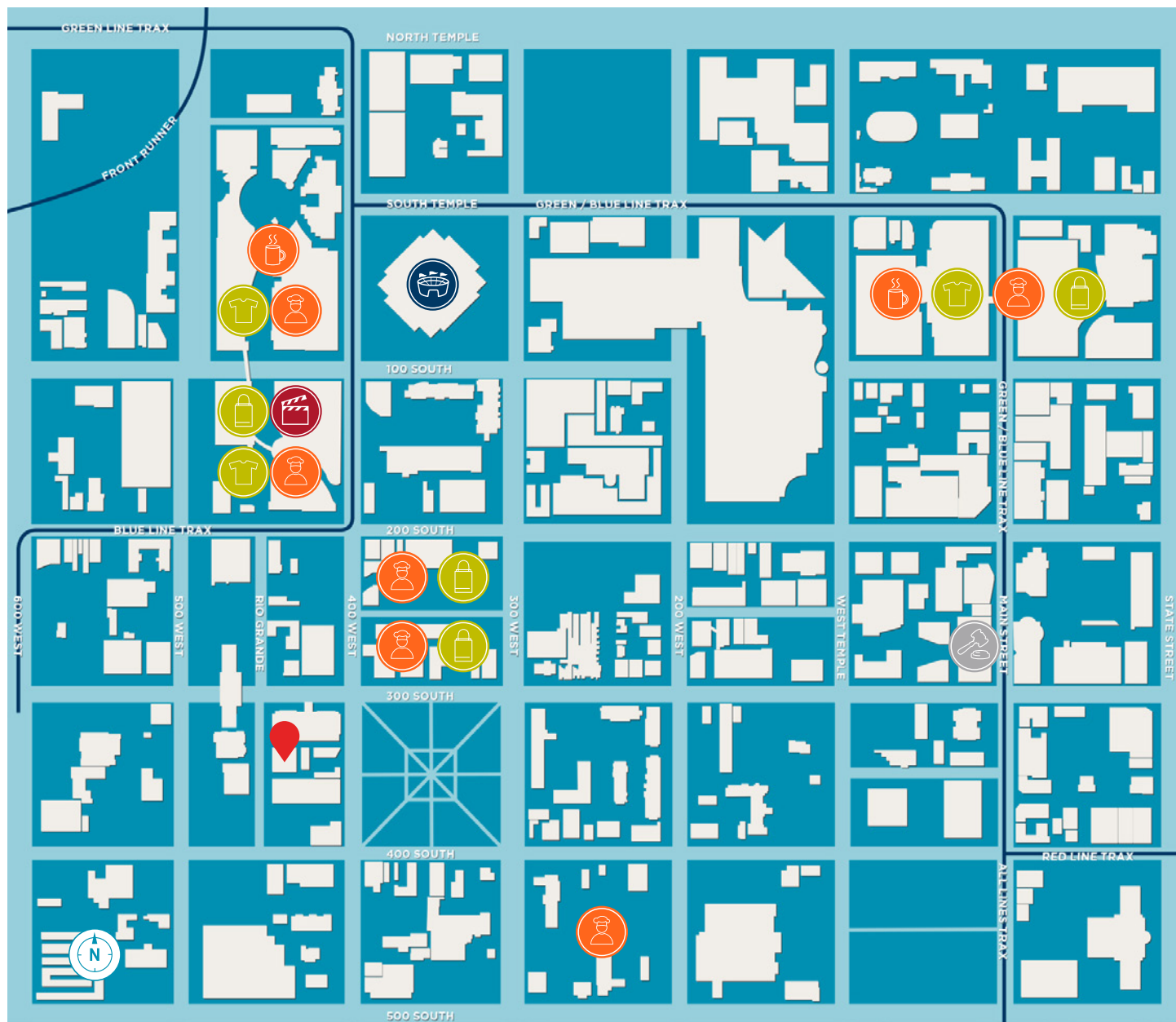
203 3,356 RSF
4 Private Offices
2 Conference Rooms
Break Area

The Carpenter Building is located in heart of the Rio Grande District - minutes from TRAX, FrontRunner and easy freeway entrance/exit.

This creative space building features high ceilings, exposed beams, wood floors, and is within easy walking distance to all downtown Salt Lake City has to offer.



AREA MAP



ALISON BEDDARD
Senior Director
+1 801 303 5568
alison.beddard@cushwake.com

ANNASTASIA KAESSNER
Associate
+1 801 303 5447
anna.kaessner@cushwake.com

170 South Main Street Suite 1600
Salt Lake City, UT 84101
Main +1 801 322 2000
Fax +1 801 322 2040
cushmanwakefield.com