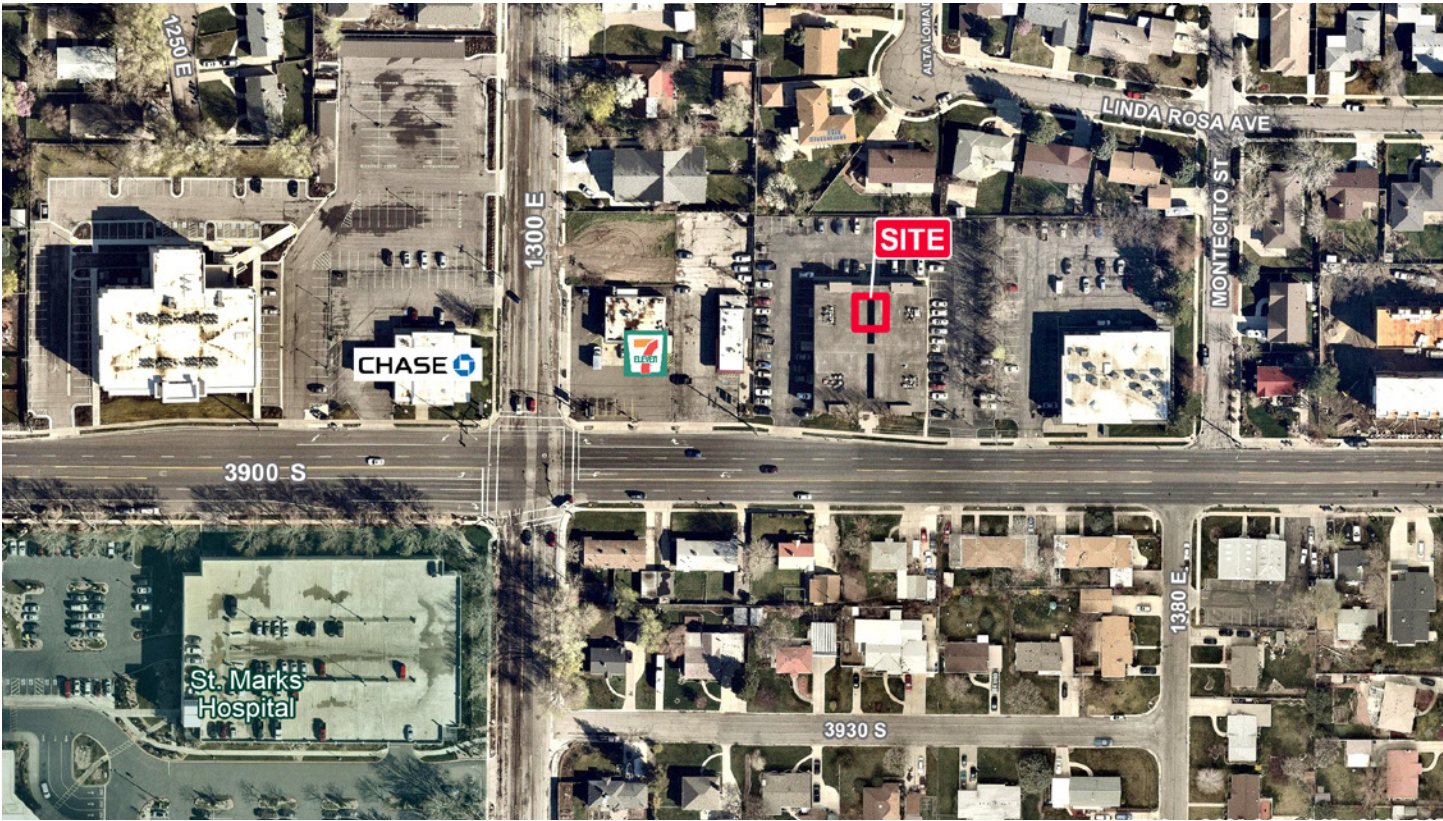
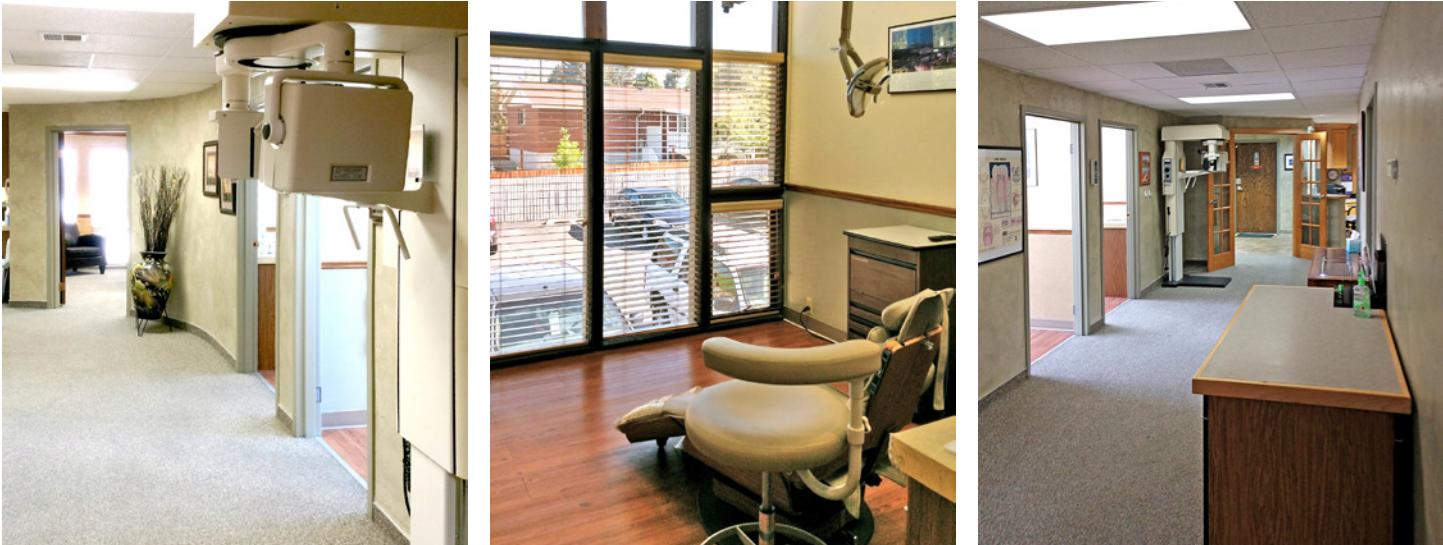




FOR SALE OR LEASE
1345 East 3900 South #208
Salt Lake City, Utah 84124



FOR SALE OR LEASE
1345 East 3900 South #208
Salt Lake City, Utah 84124



Sale Price: ~~\$278,900~~ **\$249,999 - Commercial Office Condo**

Property Highlights

- 1,301 SF
- Lease Rate: \$25 Modified Gross
- Great location adjacent to St. Mark's Hospital, surrounded by dentists, medical and other professionals
- 3 operatories
- Each room equipped with Oxygen and Nitrous oxide for Dental or Oral Surgeons if desired
- All common areas maintained through HOA. Expenses available upon request
- Centralized suction

Demographics

	1 Mile	3 Mile	5 Mile
Population			
2016 Estimated Population	18,746	145,067	323,607
2021 Projected Population	19,498	152,505	338,363
Households			
2016 Estimated Households	7,630	58,358	127,740
2021 Projected Households	7,933	61,365	133,647
2016 Est. Median HH Income	\$55,515	\$55,273	\$55,111
2016 Est. Average HH Income	\$75,217	\$76,051	\$77,229
2016 Est. Per Capita HH Income	\$31,484	\$30,808	\$30,864

Source: U.S. Census Bureau, Census 2010 Data. Esri forecasts for 2016 and 2021.

Mark Haroldsen
Commercial Investment Properties
+1 435 575 5635
mark.haroldsen@cushwake.com

170 South Main Street Suite 1600
Salt Lake City, UT 84101
Main +1 801 322 2000
Fax +1 801 322 2040
cushmanwakefield.com

Mark Haroldsen
Commercial Investment Properties
+1 435 575 5635
mark.haroldsen@cushwake.com

170 South Main Street Suite 1600
Salt Lake City, UT 84101
Main +1 801 322 2000
Fax +1 801 322 2040
cushmanwakefield.com

