



RIVERPARK VI



SUBLEASE



Jeff Rossi
Executive Director
+1 801 303 5452
jeff.rossi@cushwake.com

Justin Bailey
Associate Director
+1 801 303 5493
justin.bailey@cushwake.com

170 South Main Street Suite 1600 | Salt Lake City, UT 84101
Main +1 801 322 2000 | Fax +1 801 322 2040 cushmanwakefield.com

Cushman & Wakefield Copyright 2016. No warranty or representation, express or implied, is made to the accuracy or completeness of the information contained herein, and same is submitted subject to errors, omissions, change of price, rental or other conditions, withdrawal without notice, and to any special listing conditions imposed by the property owner(s). As applicable, we make no representation as to the condition of the property (or properties) in question.(path:G:\Gigas\1 - Projects\Rossi, Jeff\1 - Flyer\Riverpark6_Sublease)

RIVERPARK VI

10897 SOUTH RIVER FRONT PARKWAY
SOUTH JORDAN, UTAH

**24,870 - 52,308 SF
AVAILABLE**

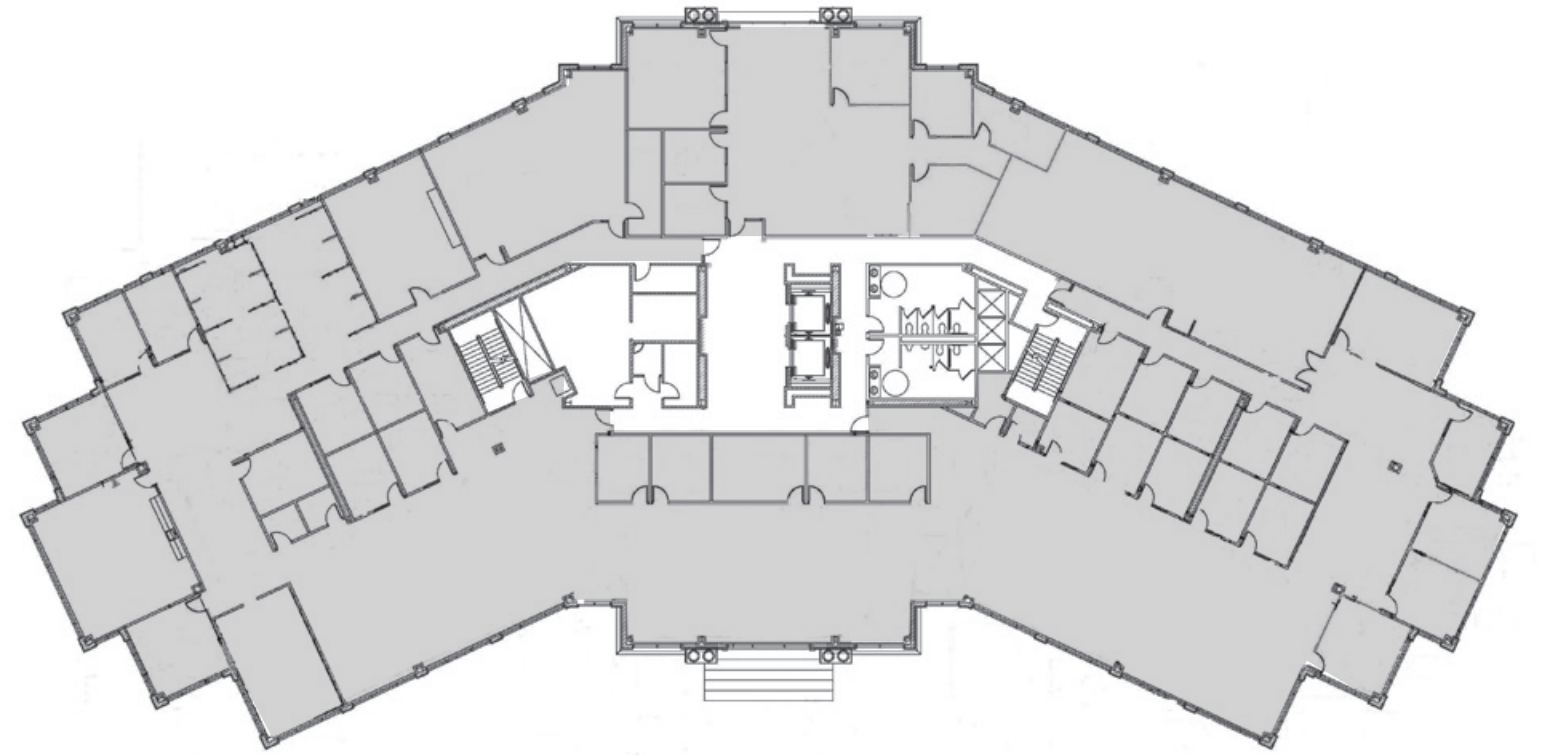


Property Highlights

- 10,000 – 52,308 SF available
- 4th and 5th Floor
 - 4th Floor – 27,438 SF
 - 5th Floor – 24,870 SF
- Lease rate \$20.00 full service
- Sublease expiration 8/31/2022
- 4.25/1,000 parking ratio
- Some furniture available



RIVERPARK VI - 4TH FLOOR



RIVERPARK VI - 5TH FLOOR

