



FOR LEASE

# 11800 South & Mountain View Corridor

Herriman, Utah

BRAND NEW WALMART SUPERCENTER ANCHORED DEVELOPMENT NEAR DAYBREAK, AND IN THE HEART OF THE RESIDENTIAL GROWTH IN THE SOUTHWEST QUADRANT.

LOCATED ON THE MOUNTAIN VIEW CORRIDOR, THIS PROJECT OFFERS MID BOX RETAIL, SHOP SPACE & PADS.



HOME

SITE PLAN

DEMOS

AERIALS

RENDERINGS

For more information, please contact:

**John Owens**  
Executive Director  
+1 801 303 5435  
john.owens@cushwake.com

**Nick Clark**  
Senior Director  
+1 801 303 5430  
nick.clark@cushwake.com

**Jonathan Owens**  
Director - Retail  
+1 801 303 5509  
jonathan.owens@cushwake.com

Cushman & Wakefield Copyright 2015. No warranty or representation, express or implied, is made to the accuracy or completeness of the information contained herein, and same is submitted subject to errors, omissions, change of price, rental or other conditions, withdrawal without notice, and to any special listing conditions imposed by the property owner(s). As applicable, we make no representation as to the condition of the property (or properties) in question. (path: M:\1 - Projects\Owens, J\1 - Flyers\11800sMountainViewCorridor)

[cushmanwakefield.com](http://cushmanwakefield.com)

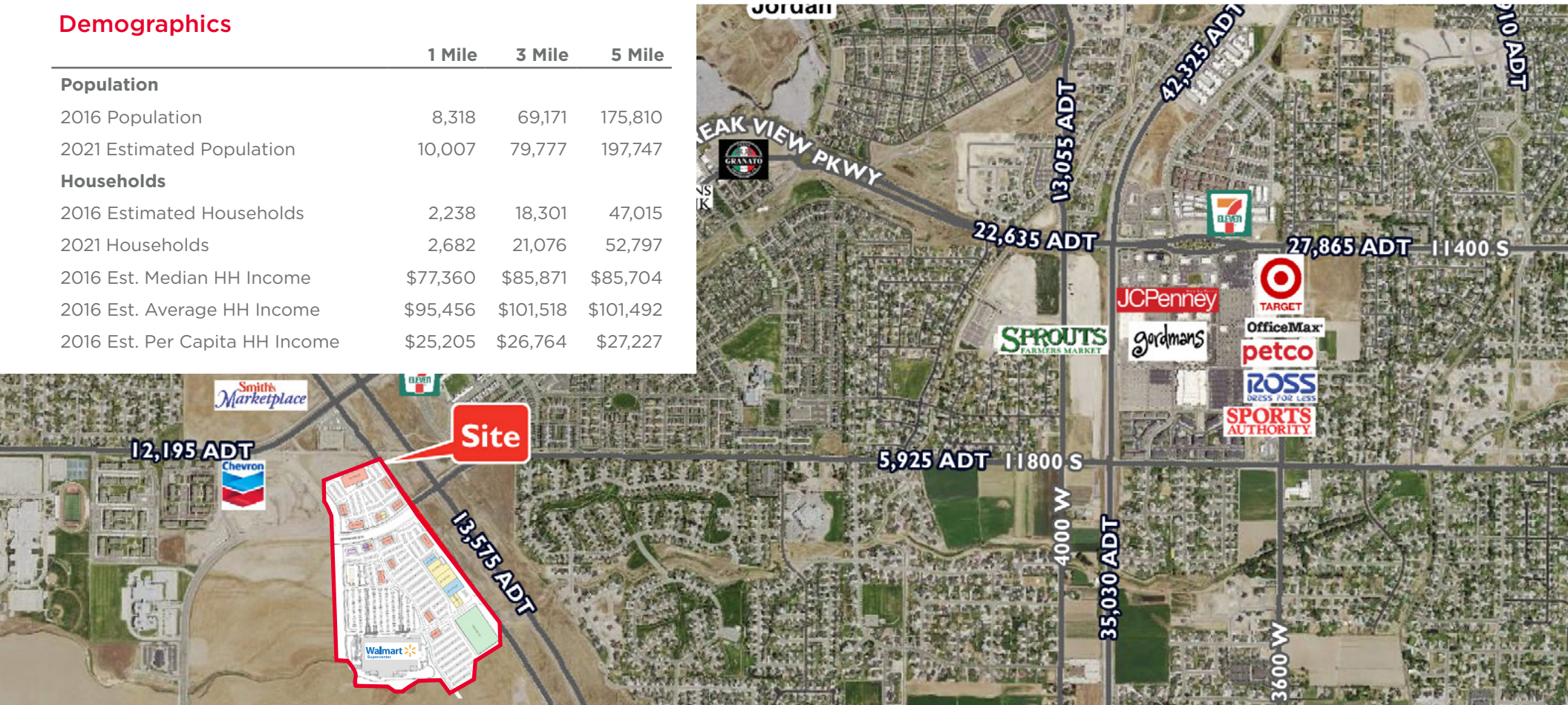




# 11800 South & Mountain View Corridor Herriman, Utah

## Demographics

	1 Mile	3 Mile	5 Mile
<b>Population</b>			
2016 Population	8,318	69,171	175,810
2021 Estimated Population	10,007	79,777	197,747
<b>Households</b>			
2016 Estimated Households	2,238	18,301	47,015
2021 Households	2,682	21,076	52,797
2016 Est. Median HH Income	\$77,360	\$85,871	\$85,704
2016 Est. Average HH Income	\$95,456	\$101,518	\$101,492
2016 Est. Per Capita HH Income	\$25,205	\$26,764	\$27,227



For more information, please contact:

**John Owens**  
Executive Director  
+1 801 303 5435  
john.owens@cushwake.com

**Nick Clark**  
Senior Director  
+1 801 303 5430  
nick.clark@cushwake.com

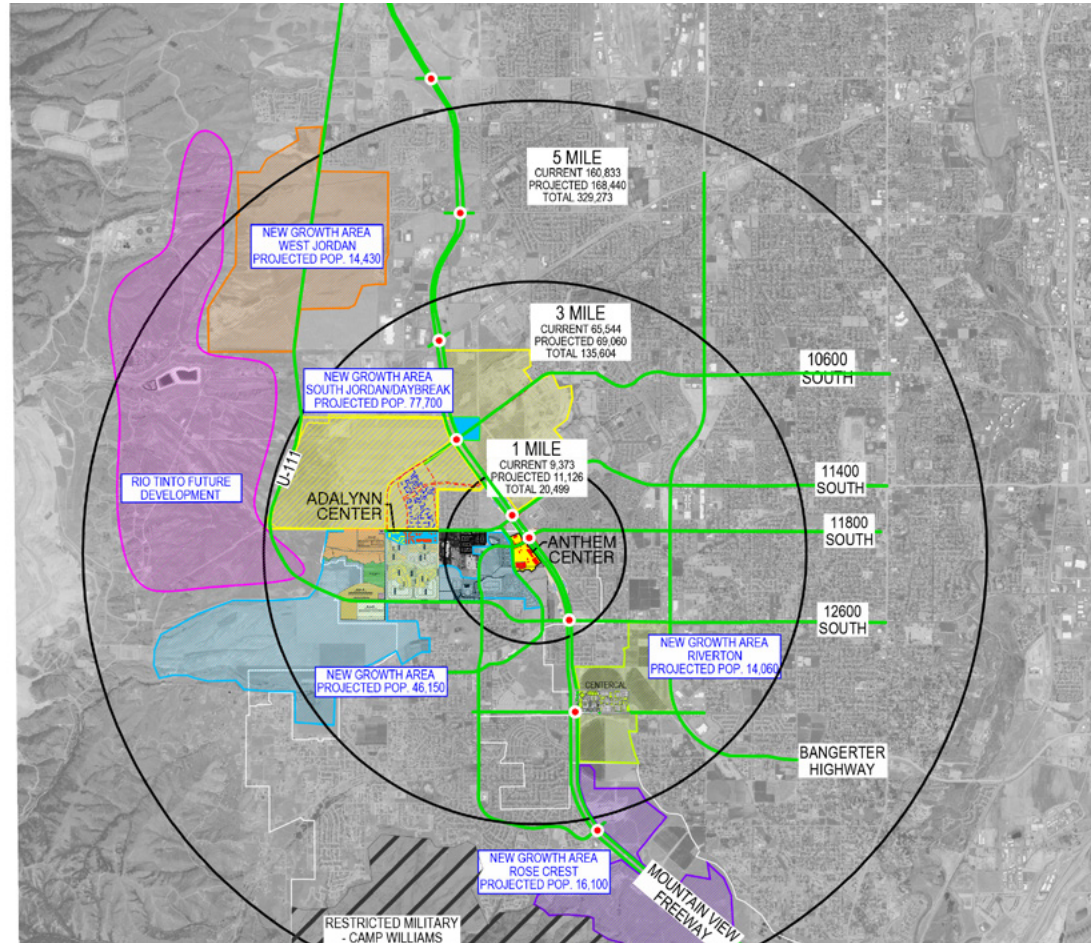
**Jonathan Owens**  
Director - Retail  
+1 801 303 5509  
jonathan.owens@cushwake.com

Cushman & Wakefield Copyright 2015. No warranty or representation, express or implied, is made to the accuracy or completeness of the information contained herein, and same is submitted subject to errors, omissions, change of price, rental or other conditions, withdrawal without notice, and to any special listing conditions imposed by the property owner(s). As applicable, we make no representation as to the condition of the property (or properties) in question.  
(path: M:\1 - Projects\Owens, J\1 - Flyers\11800sMountainViewCorridor)

[cushmanwakefield.com](http://cushmanwakefield.com)



# 11800 South & Mountain View Corridor Herriman, Utah



For more information, please contact:

**John Owens**  
Executive Director  
+1 801 303 5435  
john.owens@cushwake.com

**Nick Clark**  
Senior Director  
+1 801 303 5430  
nick.clark@cushwake.com

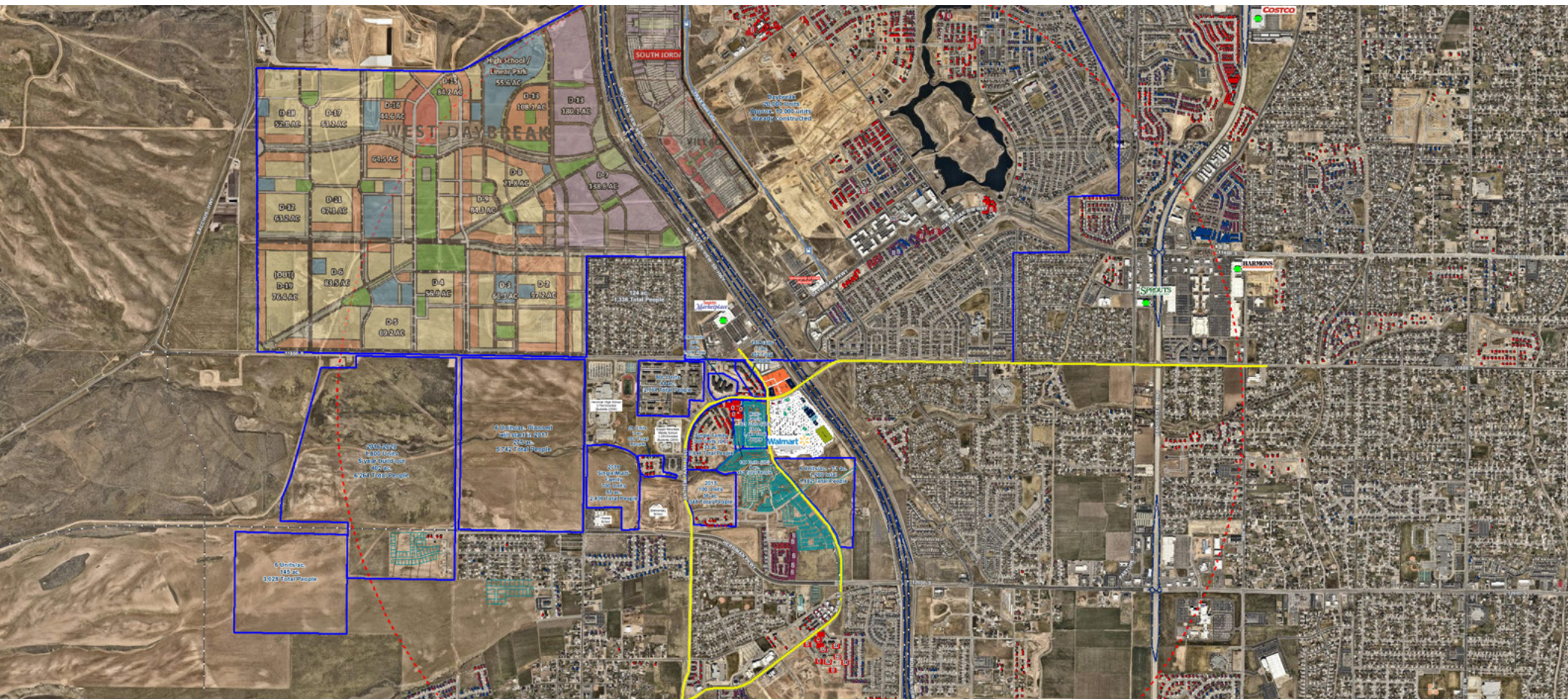
**Jonathan Owens**  
Director - Retail  
+1 801 303 5509  
jonathan.owens@cushwake.com

Cushman & Wakefield Copyright 2015. No warranty or representation, express or implied, is made to the accuracy or completeness of the information contained herein, and same is submitted subject to errors, omissions, change of price, rental or other conditions, withdrawal without notice, and to any special listing conditions imposed by the property owner(s). As applicable, we make no representation as to the condition of the property (or properties) in question.  
(path: M:\1 - Projects\Owens, J\1 - Flyers\11800sMountainViewCorridor)

**cushmanwakefield.com**



# 11800 South & Mountain View Corridor Herriman, Utah



For more information, please contact:

**John Owens**  
**Executive Director**  
**+1 801 303 5435**  
**john.owens@cushwake.com**

**Nick Clark**  
**Senior Director**  
**+1 801 303 5430**  
**[nick.clark@cushwake.com](mailto:nick.clark@cushwake.com)**

**Jonathan Owens**  
**Director - Retail**  
**+1 801 303 5509**  
**jonathan.owens@cushwake.com**

Cushman & Wakefield Copyright 2015. No warranty or representation, express or implied, is made to the accuracy or completeness of the information contained herein, and same is submitted subject to errors, omissions, change of price, rental or other conditions, withdrawal without notice, and to any special listing conditions imposed by the property owner(s). As applicable, we make no representation as to the condition of the property (or properties) in question. (path: M:\1 - Projects\Owens, J\1 - Flyers\11800sMountainViewCorridor)

[cushmanwakefield.com](http://cushmanwakefield.com)



# 11800 South & Mountain View Corridor

Herriman, Utah



For more information, please contact:

**John Owens**  
Executive Director  
+1 801 303 5435  
[john.owens@cushwake.com](mailto:john.owens@cushwake.com)

**Nick Clark**  
Senior Director  
+1 801 303 5430  
[nick.clark@cushwake.com](mailto:nick.clark@cushwake.com)

**Jonathan Owens**  
Director - Retail  
+1 801 303 5509  
[jonathan.owens@cushwake.com](mailto:jonathan.owens@cushwake.com)

Cushman & Wakefield Copyright 2015. No warranty or representation, express or implied, is made to the accuracy or completeness of the information contained herein, and same is submitted subject to errors, omissions, change of price, rental or other conditions, withdrawal without notice, and to any special listing conditions imposed by the property owner(s). As applicable, we make no representation as to the condition of the property (or properties) in question. (path: M:\1 - Projects\Owens, J\1 - Flyers\11800sMountainViewCorridor)

[cushmanwakefield.com](http://cushmanwakefield.com)





For more information, please contact:

**John Owens**  
Executive Director  
+1 801 303 5435  
[john.owens@cushwake.com](mailto:john.owens@cushwake.com)

**Nick Clark**  
Senior Director  
+1 801 303 5430  
[nick.clark@cushwake.com](mailto:nick.clark@cushwake.com)

**Jonathan Owens**  
Director - Retail  
+1 801 303 5509  
[jonathan.owens@cushwake.com](mailto:jonathan.owens@cushwake.com)

Cushman & Wakefield Copyright 2015. No warranty or representation, express or implied, is made to the accuracy or completeness of the information contained herein, and same is submitted subject to errors, omissions, change of price, rental or other conditions, withdrawal without notice, and to any special listing conditions imposed by the property owner(s). As applicable, we make no representation as to the condition of the property (or properties) in question. (path: M:\1 - Projects\Owens, J\1 - Flyers\11800sMountainViewCorridor)

**[cushmanwakefield.com](http://cushmanwakefield.com)**





For more information, please contact:

**John Owens**  
Executive Director  
+1 801 303 5435  
[john.owens@cushwake.com](mailto:john.owens@cushwake.com)

**Nick Clark**  
Senior Director  
+1 801 303 5430  
[nick.clark@cushwake.com](mailto:nick.clark@cushwake.com)

**Jonathan Owens**  
Director - Retail  
+1 801 303 5509  
[jonathan.owens@cushwake.com](mailto:jonathan.owens@cushwake.com)

Cushman & Wakefield Copyright 2015. No warranty or representation, express or implied, is made to the accuracy or completeness of the information contained herein, and same is submitted subject to errors, omissions, change of price, rental or other conditions, withdrawal without notice, and to any special listing conditions imposed by the property owner(s). As applicable, we make no representation as to the condition of the property (or properties) in question. (path: M:\1 - Projects\Owens, J\1 - Flyers\11800sMountainViewCorridor)

[cushmanwakefield.com](http://cushmanwakefield.com)