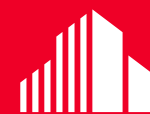


ROCKWORTH'S  
INNOVATIVE  
DEVELOPMENT  
HITS  
DOWNTOWN!

RENOVATIONS UNDERWAY, ESTIMATED COMPLETION JULY 2018!



FOR LEASE  
**275 East 200 South**  
Salt Lake City, Utah 84111



**CUSHMAN &  
WAKEFIELD**

**ROCKWORTH**  
COMPANIES

*Another quality development by the Rockworth Companies*



## New Downtown Building on Market!

Under new ownership -

**New modern exterior -**

Perfect for single or multi-tenant -

**Work in the heart of downtown without the high overhead!**

### PROPERTY HIGHLIGHTS

- 6,123 - 48,980 RSF available
- 3/1,000 RSF attached parking garage (\$75/stall)
- Generous T.I. packages available for qualified tenants
- Best-In-Class showers/lockers/bike storage
- Crown signage available
- All new renovations to restrooms, lobby and corridors
- **\$23.50/RSF/year, full service (less in-suite janitorial)**

### AMENITIES LEVEL RENDERINGS



COMMUNAL TABLE



CONFERENCE ROOM



READING HUB



GAMING STATION



LOUNGE DIRECTORY





LOUNGE AREA



GATHERING AREA



SWINGS

DOWNTOWN

# Salt Lake City

## SALT LAKE CITY

Population	192,672
Median Income	\$48,761
Per Capita Income	\$32,326
Average Home Cost*	\$262,400
Area	110.4mi <sup>2</sup>

## ECONOMICS

### Job Growth

UTAH  
**2.9%**  
NATIONAL  
**2.9%**

BLS, July 2017

### Population Growth

UTAH  
**8.35%**  
NATIONAL  
**3.68%**

US Census, 2011-2016

### Median Age

UTAH  
**30.6**  
NATIONAL  
**37.8%**

US Census, 2015

### Education Budget

UTAH  
**40%**  
NATIONAL  
**29%**

US Census, 2015

### Corporate Tax

UTAH  
**5.00%**  
NATIONAL  
**6.87%**

TAX FOUNDATION, 2017

### GDP Growth

UTAH  
**1.9%**  
NATIONAL  
**1.2%**

BEA, Q1 2017

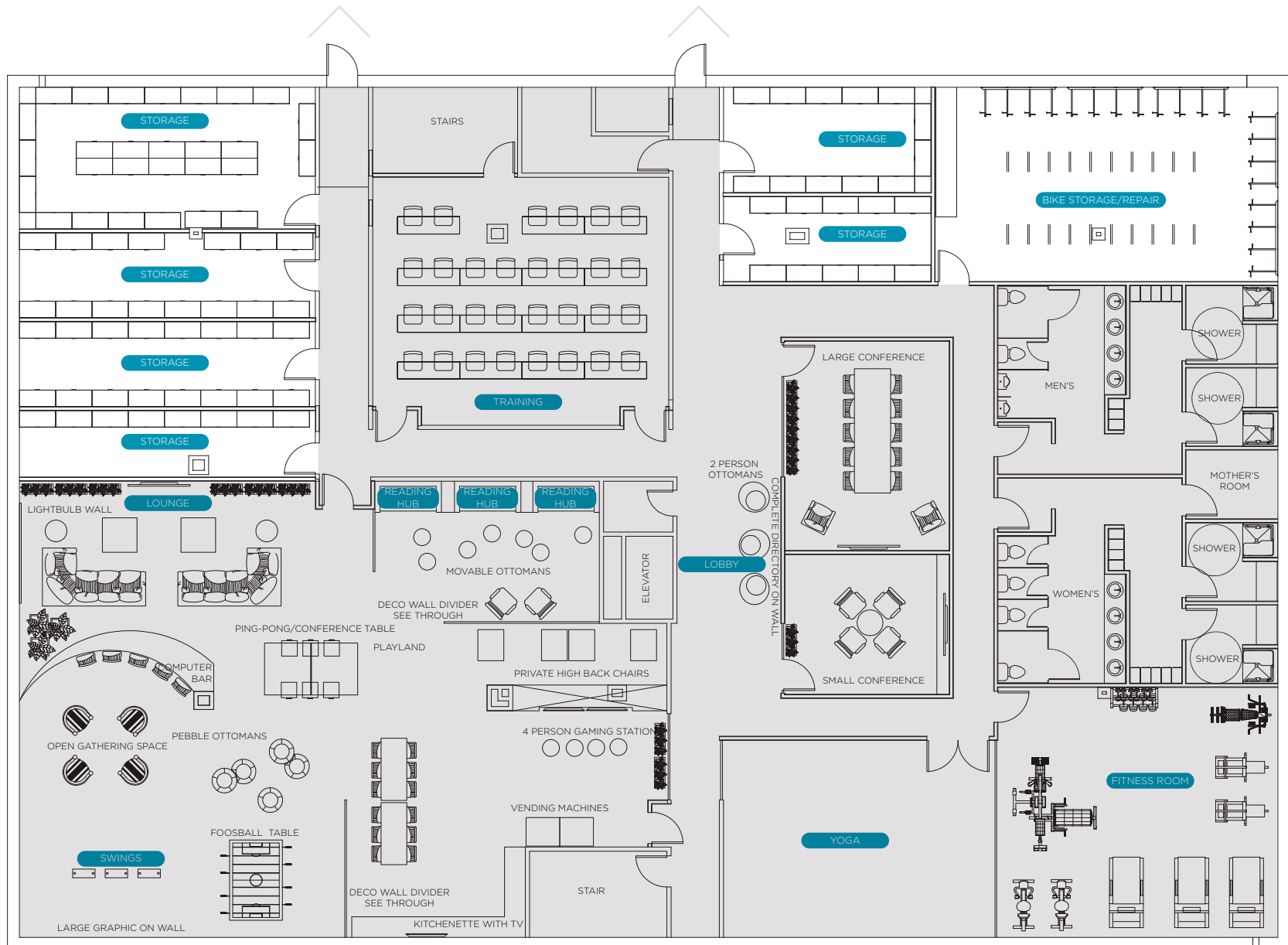
# No.1

For three years straight, *Forbes* has ranked Utah as the “Best State for Business and Careers.” Utah has earned the No.1 spot for six of the past seven years.

# No.1

Utah jumped to the top of CNBC’s “Top States for Business 2106” list. The state has been in the top 10 every year for the past 10 years.

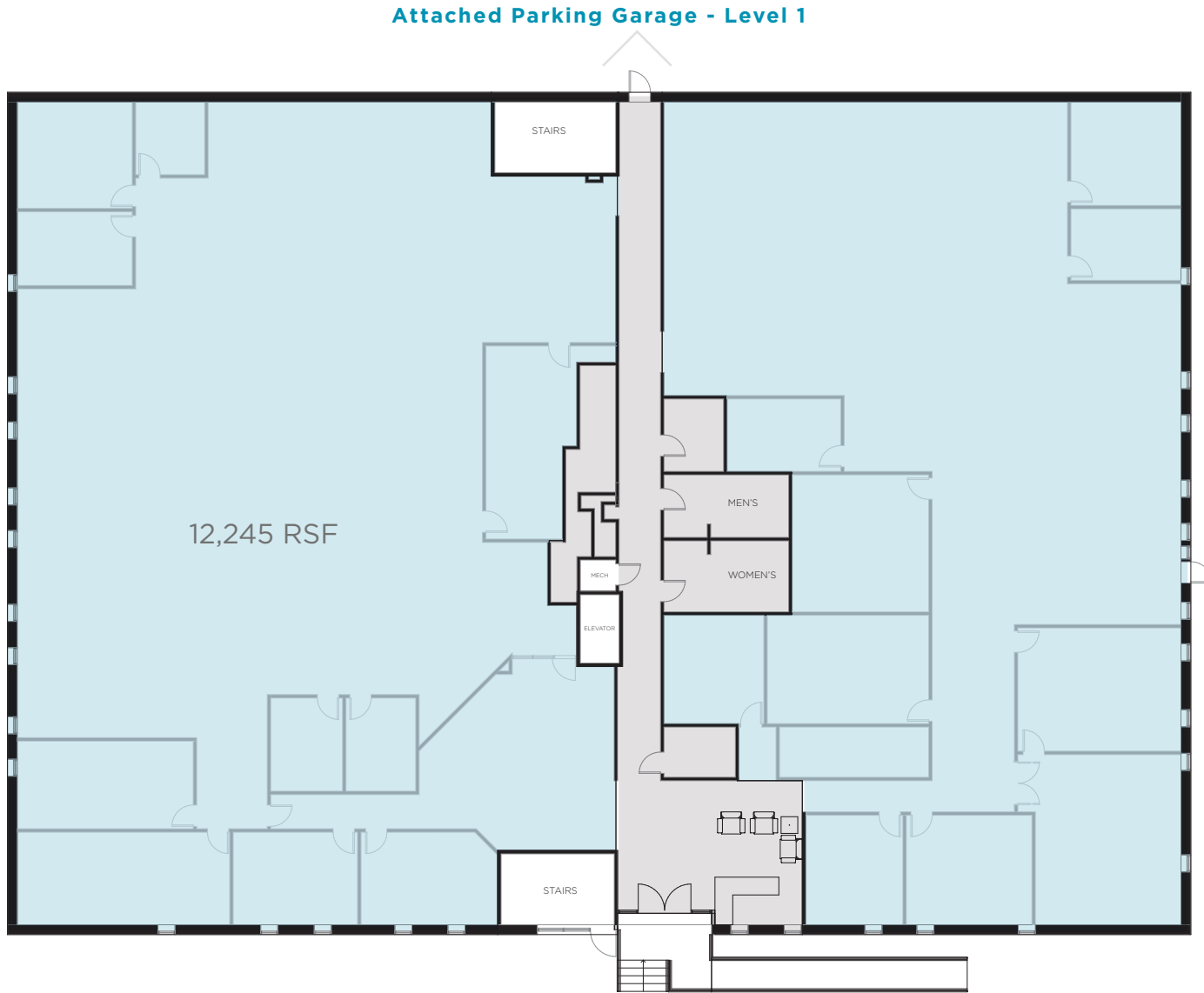
# Attached Parking Garage - Lower Level



AVAILABLE

COMMON

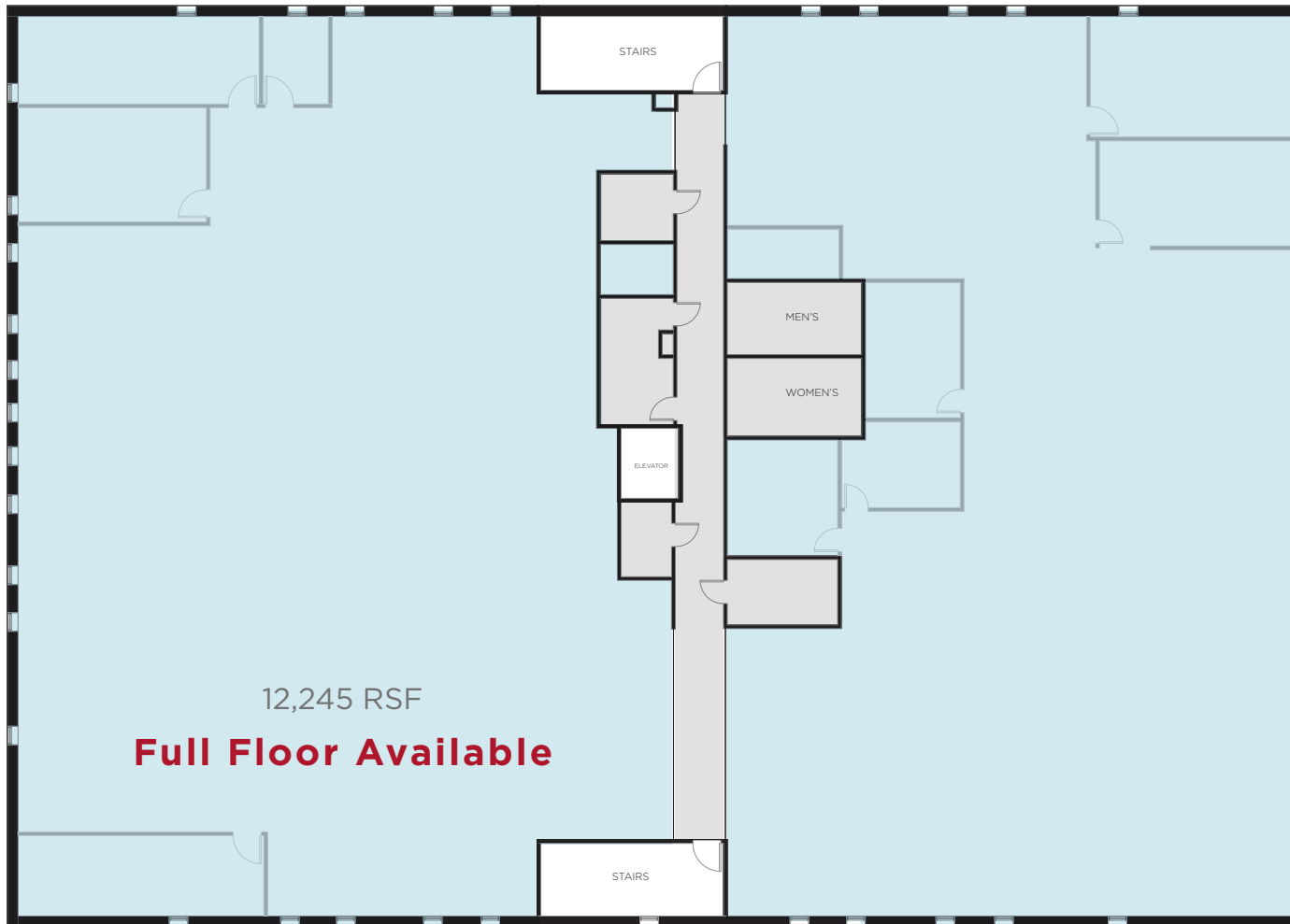




AVAILABLE COMMON



Attached Parking Garage - Level 2

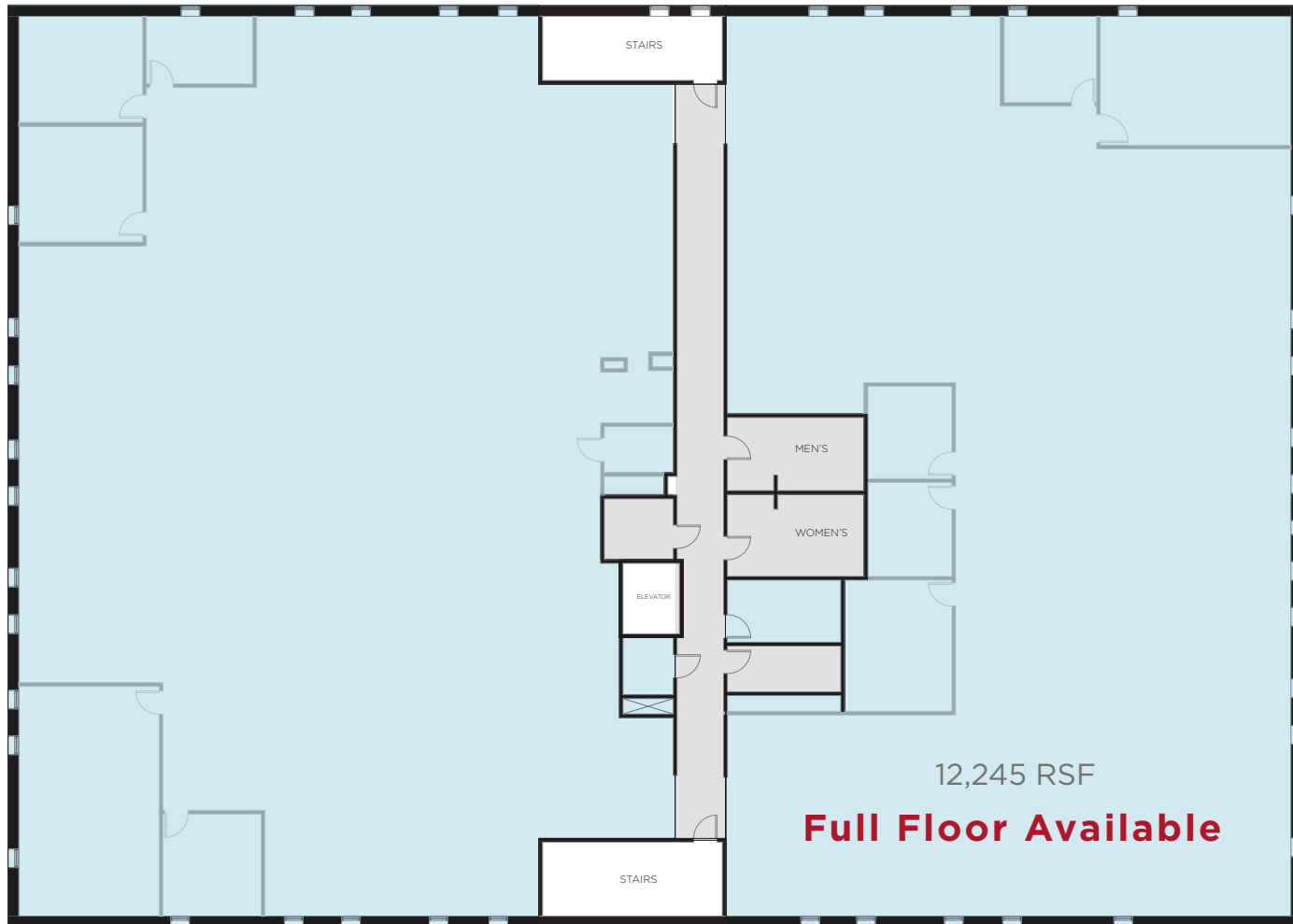


AVAILABLE

COMMON



Full Floor Available



AVAILABLE COMMON

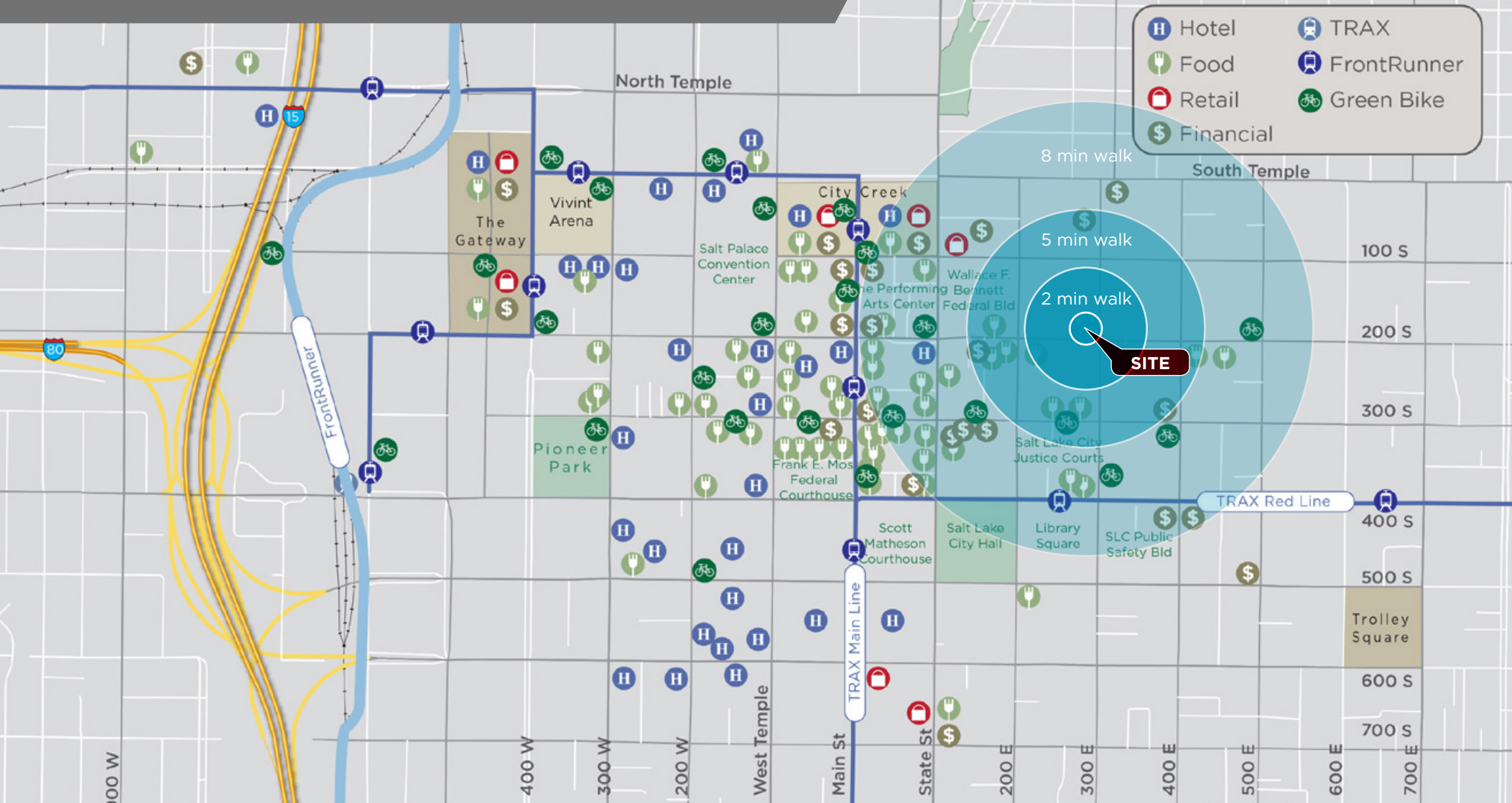




FOR LEASE

# 275 East 200 South

Salt Lake City, Utah 84111



**Alison Beddard**

Senior Director - Office & Investment  
+1 801 303 5568  
alison.beddard@cushwake.com

**Peter Hanlon**

Director - Office & Healthcare  
+1 801 303 5455  
peter.hanlon@cushwake.com

**Annastasia Kaessner**

Associate  
+1 801 303 5447  
annastasia.kaessner@cushwake.com



170 South Main, Suite 1600 | Salt Lake City, UT 84101  
Main +1 801 322 2000 | Fax +1 801 322 2040 | [cushmanwakefield.com](http://cushmanwakefield.com)