



MEDICAL OFFICE SPACE

Brand New State-of-the-Art Surgery Center on Entire Main Level

Property Highlights

- St. Mark's Hospital Surgery Center on main level
- Suite size 1,168 RSF - Landlord will build out premises to specifically suit tenant's needs
- Lease Rate: \$17.50 NNN
- Abundant covered parking available
- Generous tenant improvements
- Park-like setting with stream
- New common area
- Class A medical
- *See reverse for floor plan*



Ralph Riedel, ccim
Executive Director | Owner/Agent
+1 801 303 5466
ralph.riedel@cushwake.com

170 South Main Street, Suite 1600
Salt Lake City, UT 84101
Main +1 801 322 2000
Fax +1 801 322 2040
cushmanwakefield.com



**CUSHMAN &
WAKEFIELD**

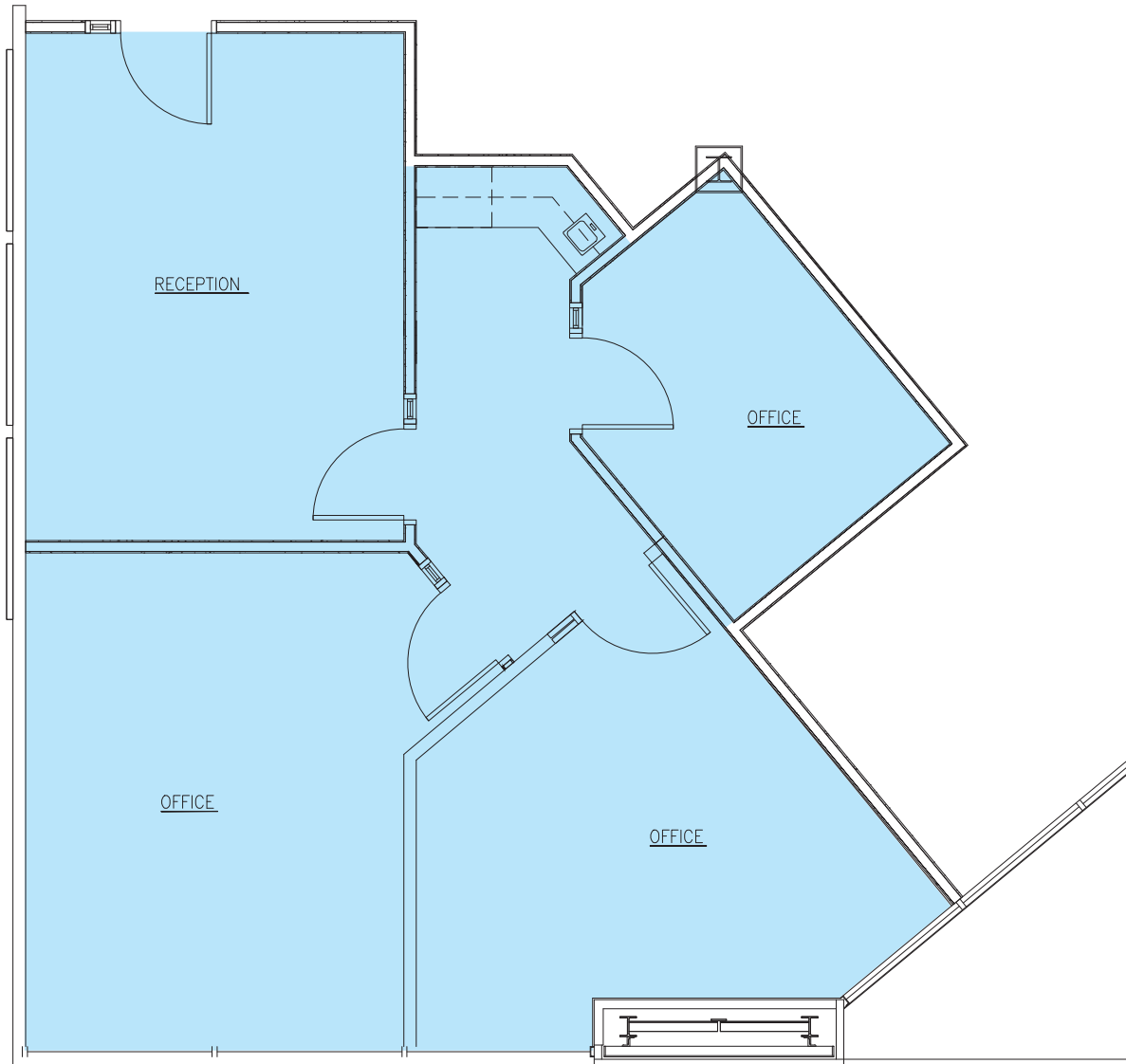
FOR LEASE

Professional Medical Office Bldg

348 East 4500 South / Salt Lake City, UT 84107

TOP FLOOR PLAN

Suite Size 1,168 RSF



Ralph Riedel, ccim
Executive Director | Owner/Agent
+1 801 303 5466
ralph.riedel@cushwake.com

170 South Main Street, Suite 1600
Salt Lake City, UT 84101
Main +1 801 322 2000
Fax +1 801 322 2040
cushmanwakefield.com