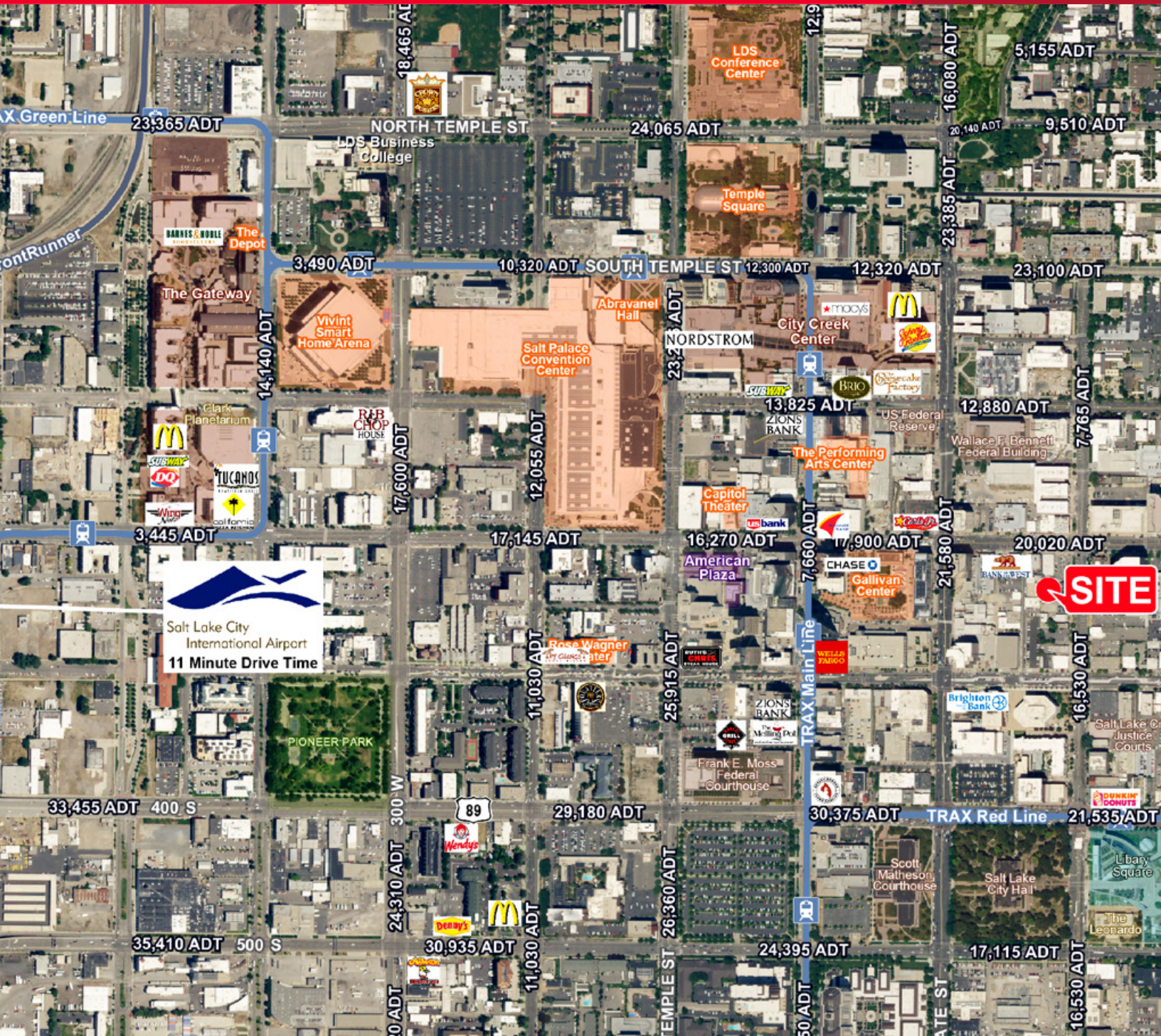




FOR LEASE
Brain Trace Building
220 South 200 East / Salt Lake City, Utah



FOR LEASE
Brain Trace Building
220 South 200 East / Salt Lake City, Utah



This 3 story stand alone building with attached parking is located on the East Side of the Central Business District. Full floor leases available on the main and 2nd floor. Within walking distance to TRAX light rail, City Creek Center and many nearby restaurants & amenities.

Property Highlights

- 1st and 2nd full floors available - 8,300 SF floor plates up to 16,600 total SF
- Attached covered parking: 4/1,000 ratio
- TI allowance available. Examples in place on 3rd floor
- High speed fiber optic and building security available
- Two TRAX line stops accessible within 2 blocks
- Rates starting at \$17.50 psf. / Full Service
- Signage available

Camron Carpenter
Director
+1 801 303 5457
camron.carpenter@cushwake.com

Mark Cannell
Associate - Office/Investment
(801) 303 5487
mark.cannell@cushwake.com

170 South Main Street Suite 1600
Salt Lake City, UT 84101
Main +1 801 322 2000
Fax +1 801 322 2040
cushmanwakefield.com

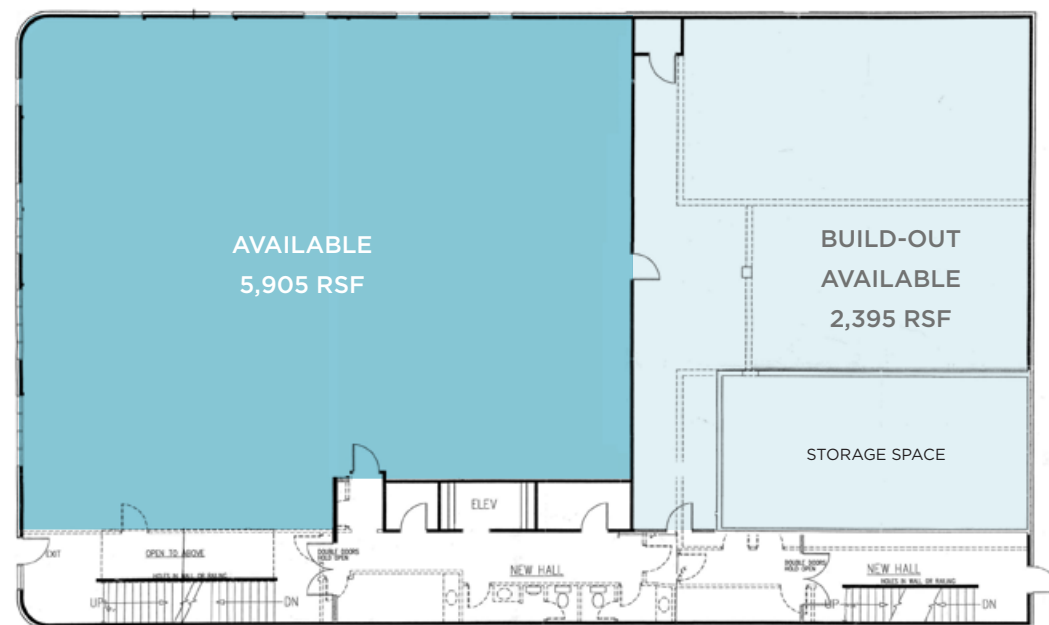
Camron Carpenter
Director
+1 801 303 5457
camron.carpenter@cushwake.com

Mark Cannell
Associate - Office/Investment
(801) 303 5487
mark.cannell@cushwake.com

170 South Main Street Suite 1600
Salt Lake City, UT 84101
Main +1 801 322 2000
Fax +1 801 322 2040
cushmanwakefield.com



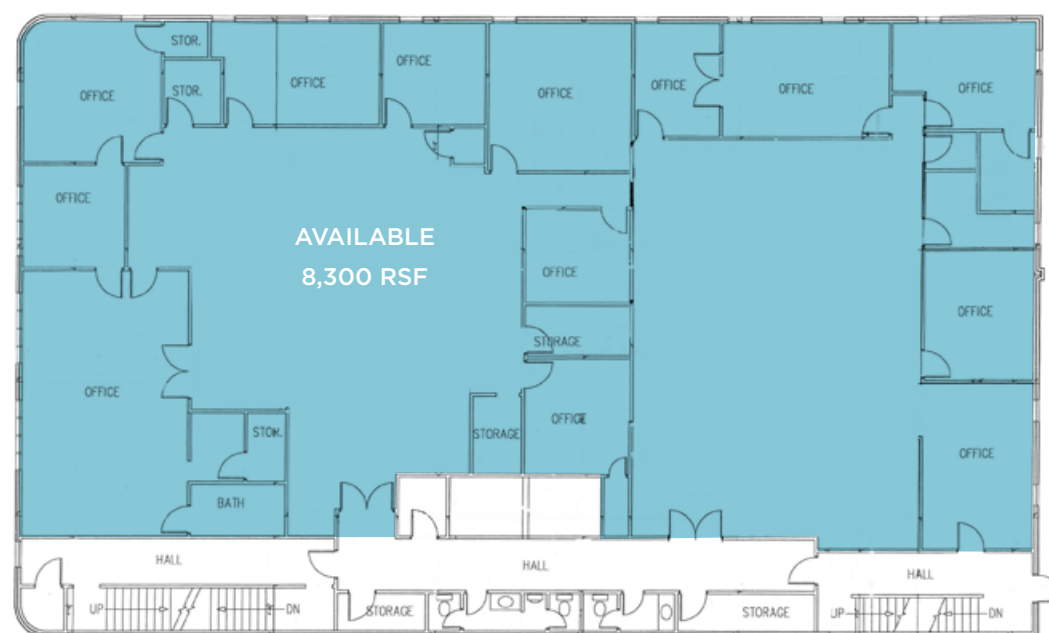
FOR LEASE
Brain Trace Building
220 South 200 East / Salt Lake City, Utah



MAIN FLOOR: UP TO 8,300 SF AVAILABLE



SECOND FLOOR BUILD-OUT



SECOND FLOOR: 8,300 SF AVAILABLE



THIRD FLOOR BUILD-OUT

