



OFFICE SPACE FOR SUBLEASE

## West Valley Corporate Park

6520 South 190th Street / Kent, WA

Cenveo.

ColorGraphics

NEW REDUCED RATE!  
KENT OFFICE SUBLEASE  
11,699 SF - 33,949 SF

### 11,699 - 33,949 SF Office Available for Sublease

#### Property Highlights

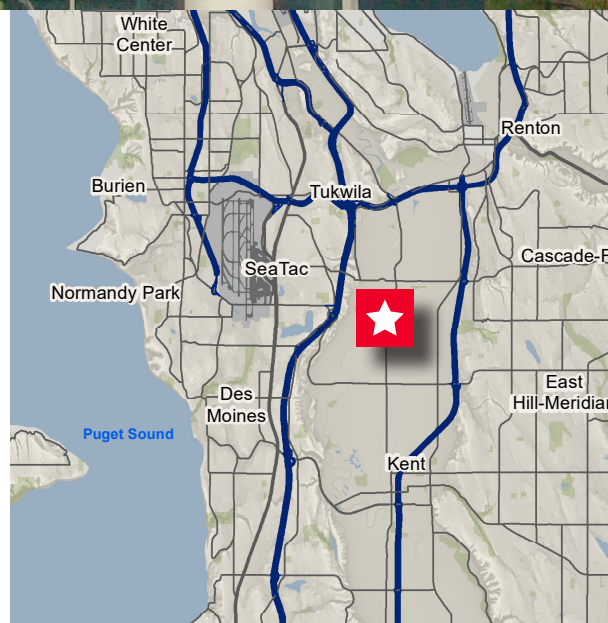
- Strong corporate image
- Generous parking
- Easy access to I-5, I-405 and SR-167
- Flexible sublease terms with potential to structure a direct deal with Landlord
- First floor space and second floor space can be leased individually or together for a total of 33,949 SF

#### First Floor Space

- 11,699 SF
- Sublease rate: **\$14.00 gross** (includes utilities, excludes janitorial)

#### Second Floor Space

- 22,250 SF
- Sublease rate: **\$12.00 gross** (includes utilities, excludes janitorial)



**Tony Kusak**  
Executive Director  
+1 206 521 0263  
tony.kusak@comre.com

**Kevin Smith**  
Associate Director  
+1 206 521 0281  
kevin.smith@comre.com

**Connor Cree**  
Associate  
+1 206 521 0289  
connor.cree@comre.com

1420 Fifth Avenue, Suite 2600  
Seattle, Washington 98101  
Main +1 206 682 0666  
Fax +1 206 521 0298  
**cushmanwakefield.com**



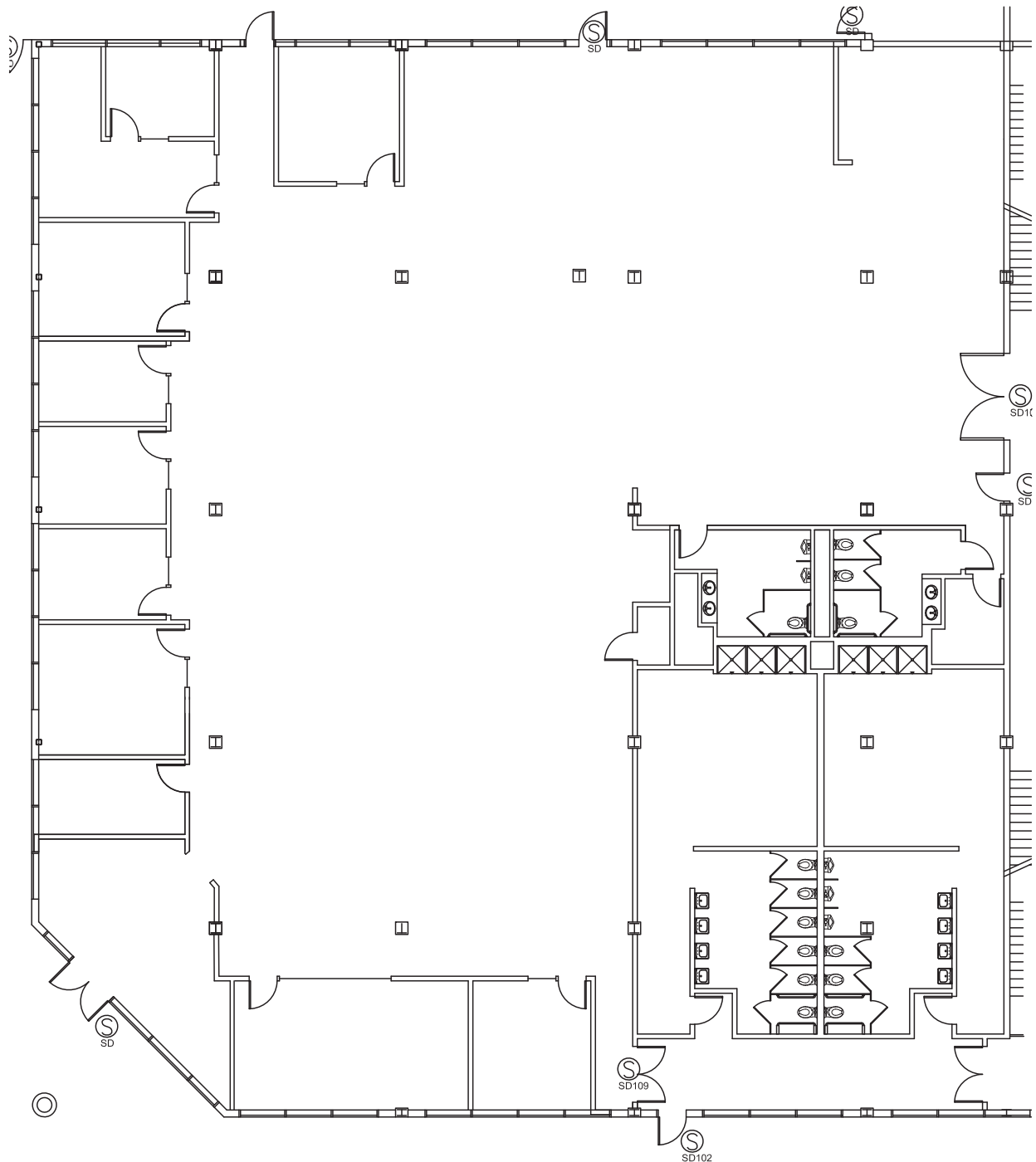
**CUSHMAN &  
WAKEFIELD**

OFFICE SPACE FOR SUBLEASE

## West Valley Corporate Park

6520 South 190th Street / Kent, WA

### First Floor Plan - 11,699 SF



**Tony Kusak**  
Executive Director  
+1 206 521 0263  
tony.kusak@comre.com

**Kevin Smith**  
Associate Director  
+1 206 521 0281  
kevin.smith@comre.com

**Connor Cree**  
Associate  
+1 206 521 0289  
connor.cree@comre.com

1420 Fifth Avenue, Suite 2600  
Seattle, Washington 98101  
Main +1 206 682 0666  
Fax +1 206 521 0298  
**cushmanwakefield.com**



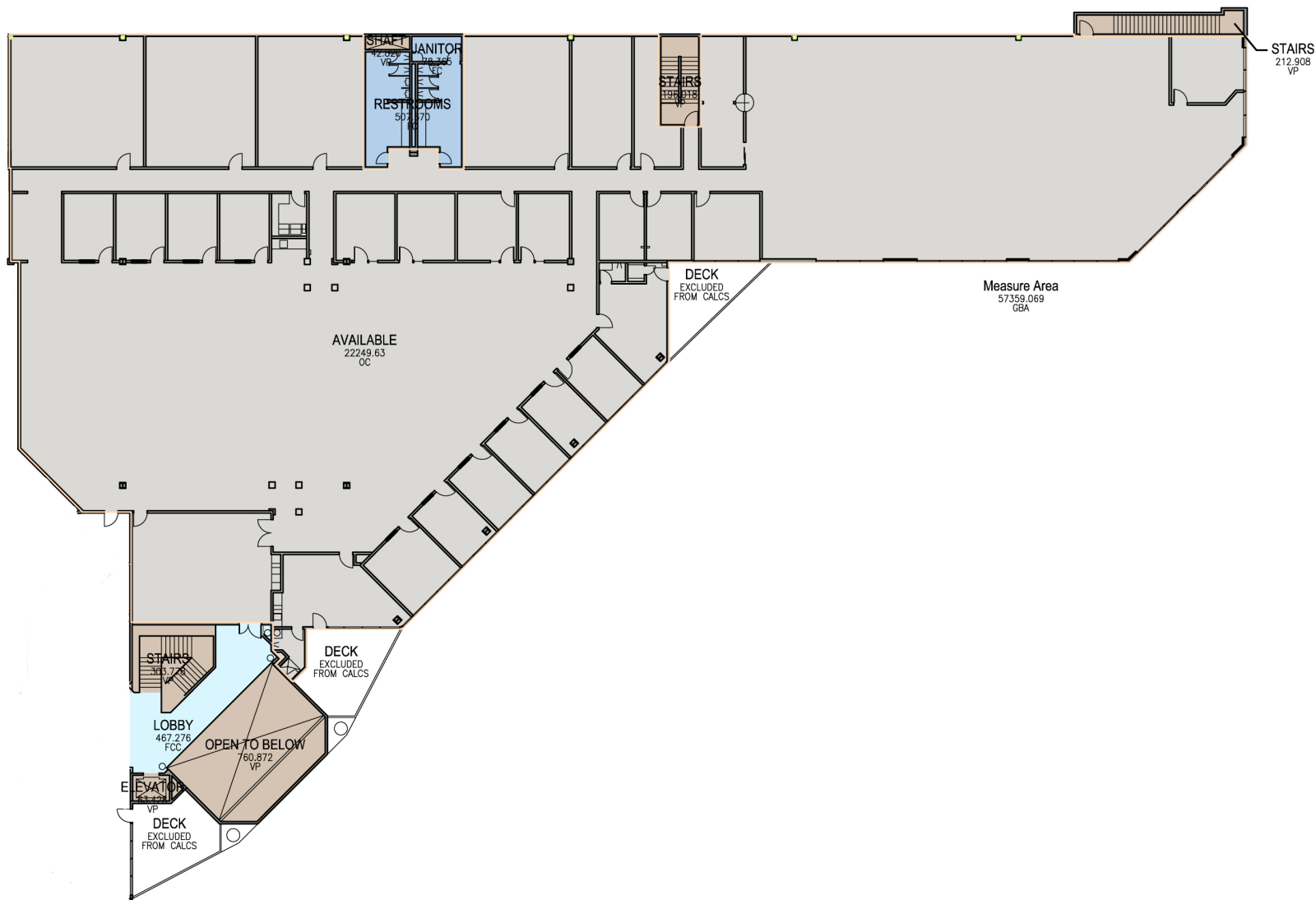
**CUSHMAN &  
WAKEFIELD**

OFFICE SPACE FOR SUBLEASE

# West Valley Corporate Park

6520 South 190th Street / Kent, WA

## Second Floor Plan - 22,250 SF



**Tony Kusak**  
Executive Director  
+1 206 521 0263  
tony.kusak@comre.com

**Kevin Smith**  
Associate Director  
+1 206 521 0281  
kevin.smith@comre.com

**Connor Cree**  
Associate  
+1 206 521 0289  
connor.cree@comre.com

1420 Fifth Avenue, Suite 2600  
Seattle, Washington 98101  
Main +1 206 682 0666  
Fax +1 206 521 0298  
**cushmanwakefield.com**





OFFICE SPACE FOR SUBLEASE

# West Valley Corporate Park

6520 South 190th Street / Kent, WA

