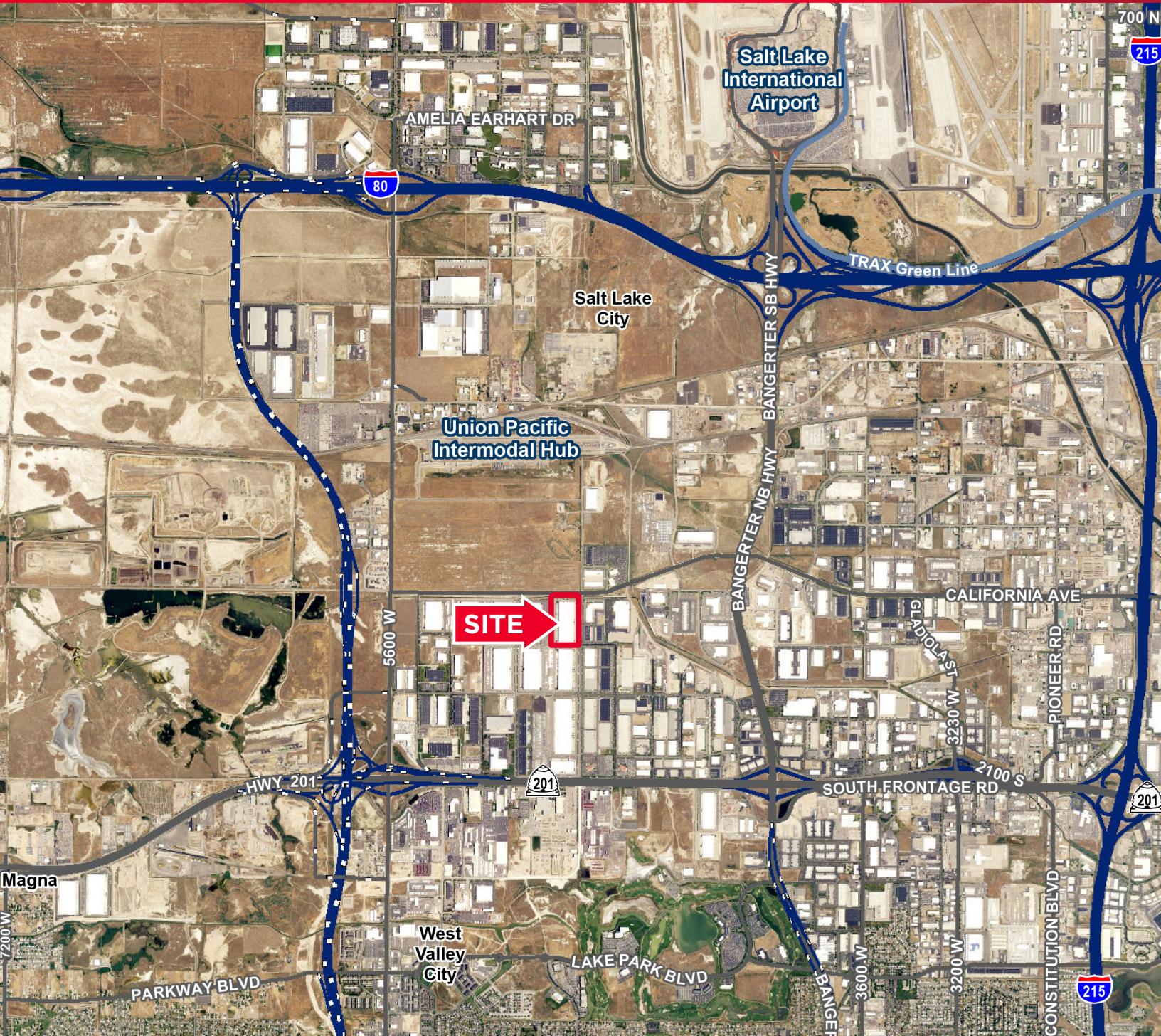




FOR SUBLEASE
1420 South 4800 West
Salt Lake City, Utah



FOR SUBLEASE
1420 South 4800 West
Salt Lake City, Utah



LANDMARK 2 SUBLEASE

Property Highlights

- 472,080 sq. ft. building
 - 173,040 sq. ft. available
 - Divisible to +/- 53,000 SF
- Thirty-Eight (38) 9'x10' dock high doors
- Two (2) 12'x14' grade level doors
- 32' clear height
- 50'x50' typical column spacing
- 60' staging area
- Cross dock configuration building
- 1,400 amps, 480/277 volt, 3-phase power
- 420' building depth
- T-5 Lighting
- Gas forced heat in warehouse
- 6" thick reinforced 4,000 PSI flooring
- ESFR fire suppression
- \$0.35/SF, NNN sublease rate
- Master lease expires May 31, 2026

Tom Freeman, SIOR
Executive Director
+1 801 303 5449
tom.freeman@cushwake.com

Travis Healey, SIOR
Senior Director
+1 801 303 5565
travis.healey@cushwake.com

Gina Moore
Director
+1 801 303 5510
gina.moore@cushwake.com

170 South Main Street Suite 1600
Salt Lake City, UT 84101
Main +1 801 322 2000
Fax +1 801 322 2040
cushmanwakefield.com

Tom Freeman, SIOR
Executive Director
+1 801 303 5449
tom.freeman@cushwake.com

Travis Healey, SIOR
Senior Director
+1 801 303 5565
travis.healey@cushwake.com

Gina Moore
Director
+1 801 303 5510
gina.moore@cushwake.com

170 South Main Street Suite 1600
Salt Lake City, UT 84101
Main +1 801 322 2000
Fax +1 801 322 2040
cushmanwakefield.com

SITE PLAN

