



UNDER CONSTRUCTION • PRE-LEASING

## Redwood Depot Industrial Park

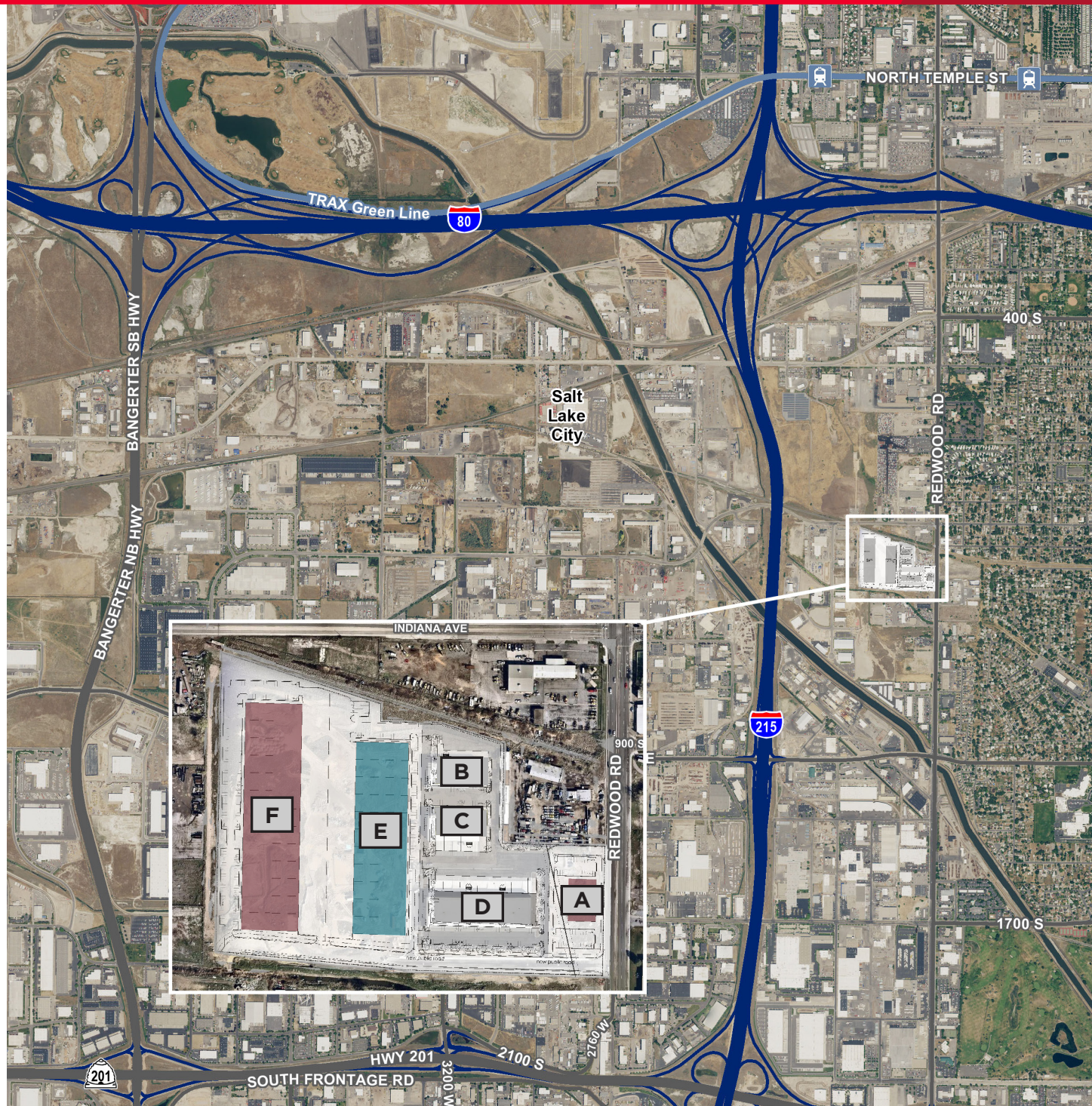
1760-1830 West Redwood Depot Ln.  
Salt Lake City, Utah



UNDER CONSTRUCTION • PRE-LEASING

## Redwood Depot Industrial Park

1760-1830 West Redwood Depot Ln.  
Salt Lake City, Utah



### Property Highlights - Phase I

- Up to 136,289 total sq. ft. available
  - Building E: 106,618 sq. ft.
  - Building F: 136,289 sq. ft.
- \$0.45 - \$0.65, NNN lease rate
- 12' x 14' grade level doors
- 9' x 10' dock high doors
- ESFR fire suppression
- Situated in the heart of the industrial market between I-80, SR 201, I-15, and I-215
- Direct access to Redwood Road
- Within 5 minutes of Salt Lake International Airport



**Tom Freeman, SIOR**  
Executive Director  
+1 801 303 5449  
tfreeman@comre.com

**Travis Healey, SIOR**  
Senior Director  
+1 801 303 5565  
thealey@comre.com

**Gina Moore**  
Director  
+1 801 303 5510  
gmoore@comre.com

170 South Main Street Suite 1600  
Salt Lake City, UT 84101  
Main +1 801 322 2000  
Fax +1 801 322 2040  
[cushmanwakefield.com](http://cushmanwakefield.com)

**Tom Freeman, SIOR**  
Executive Director  
+1 801 303 5449  
tfreeman@comre.com

**Travis Healey, SIOR**  
Senior Director  
+1 801 303 5565  
thealey@comre.com

**Gina Moore**  
Director  
+1 801 303 5510  
gmoore@comre.com

170 South Main Street Suite 1600  
Salt Lake City, UT 84101  
Main +1 801 322 2000  
Fax +1 801 322 2040  
[cushmanwakefield.com](http://cushmanwakefield.com)



## PROPERTY INFORMATION:

### BUILDING E - 1810 WEST REDWOOD DEPOT LANE:

- Total Size: 106,618 SF  
Divisible to 9,688 sq. ft.
- Office: Finish to suit
- Lease Rate: \$0.45 - \$0.65/SF, NNN
- Clear Height: 32'
- Car Parking: 82 striped stalls
- Power: 2,000 amps, 277/480 volt, 3-phase
- Typical Column Spacing: 56'x37' (60' staging bay)
- Loading: (6) 12' x 14' grade level doors  
(20) 9' x 10' dock high doors (expandable)
- Delivery Date: Q4 2017

### BUILDING F - 1830 WEST REDWOOD DEPOT LANE:

- Total Size: 136,289 SF  
Divisible to 10,472 sq. ft.
- Office: Finish to suit
- Lease Rate: TBD
- Clear Height: 32'
- Car Parking: 194 striped stalls
- Power: 2,500 amps, 277/480 volt, 3-phase
- Typical Column Spacing: 56'x42' (61' staging area)
- Loading: (6) 12' x 14' grade level doors  
(24) 9' x 10' dock high doors (expandable)
- Delivery Date: TBD - Planned

## SITE PLAN

