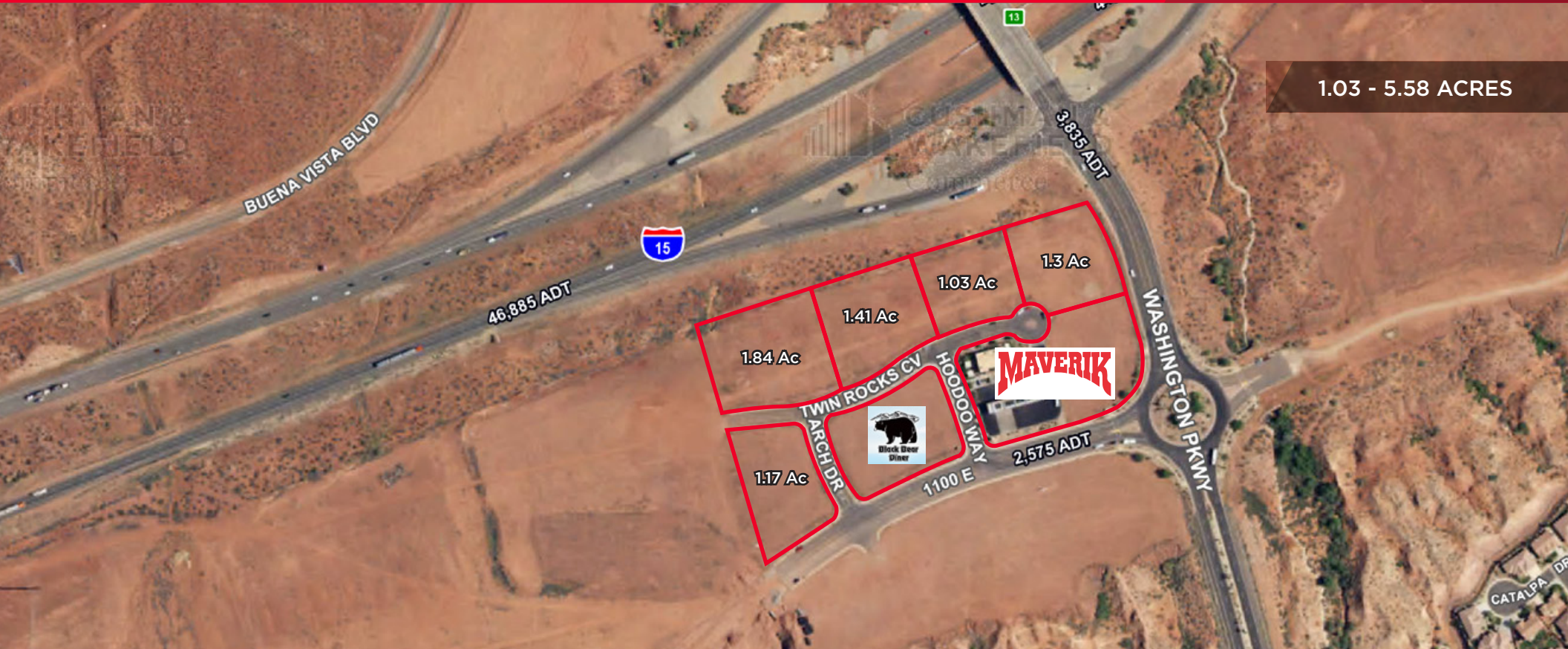


# Retail Pads Fronting I-15

Exit 13 - Interstate 15, Washington Parkway & Sienna Hills Blvd.  
Washington, Utah 84737

1.03 - 5.58 ACRES



## Property Highlights

- Pad ready retail, hospitality and entertainment
- I-15 frontage, access & visibility
- Priced competitively
- Ready to build
- Highway commercial zoning
- Priced between \$12.00 - \$14.00 sq. ft.

**Tom Callister, SIOR**  
Director  
+1 435 986 4709  
tcallister@comre.com

**Travis J. Parry, SIOR, CCIM**  
Senior Director  
+1 435 986 4708  
tparry@comre.com

2 West St. George Blvd, Suite 10  
St. George, Utah 84770  
Main +1 435 673 7111  
Fax +1 435 673 7153  
**comre.com**



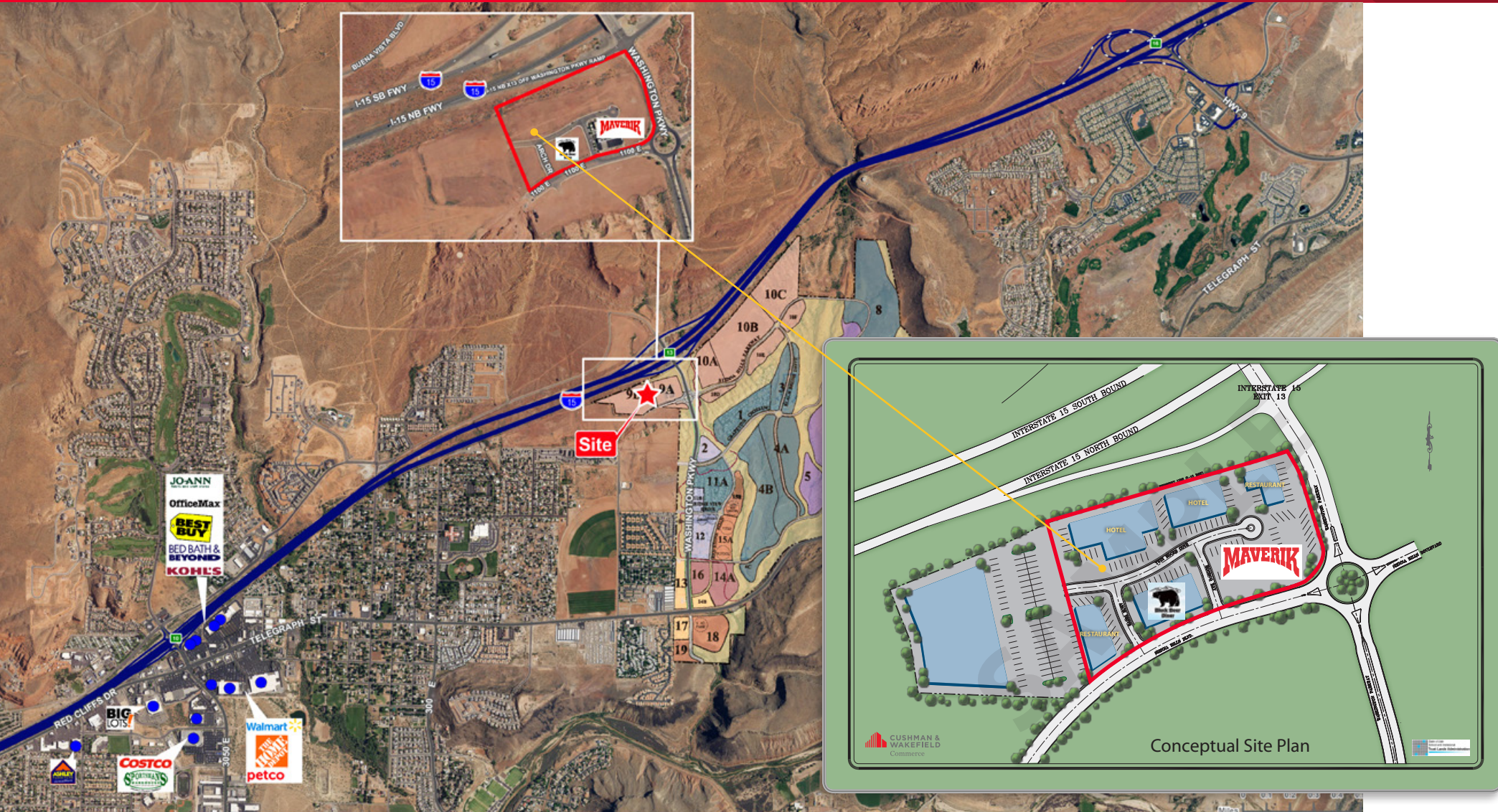
*Independently Owned and Operated / A Member of the Cushman & Wakefield Alliance*

Cushman & Wakefield Copyright 2017. No warranty or representation, express or implied, is made to the accuracy or completeness of the information contained herein, and same is submitted subject to errors, omissions, change of price, rental or other conditions, withdrawal without notice, and to any special listing conditions imposed by the property owner(s). As applicable, we make no representation as to the condition of the property (or properties) in question. (path: G:\1 - Projects\St George\Parry-Travis\1 - Flyers\WashingtonPkw-SiennaHillsBlvd)



# Retail Pads Fronting I-15

Exit 13 - Interstate 15, Washington Parkway & Sienna Hills Blvd.  
Washington, Utah 84737



**Tom Callister, SIOR**  
Director  
+1 435 986 4709  
tcallister@comre.com

**Travis J. Parry, SIOR, CCIM**  
Senior Director  
+1 435 986 4708  
tparry@comre.com

2 West St. George Blvd, Suite 10  
St. George, Utah 84770  
Main +1 435 673 7111  
Fax +1 435 673 7153  
**comre.com**

*Independently Owned and Operated / A Member of the Cushman & Wakefield Alliance*

Cushman & Wakefield Copyright 2017. No warranty or representation, express or implied, is made to the accuracy or completeness of the information contained herein, and same is submitted subject to errors, omissions, change of price, rental or other conditions, withdrawal without notice, and to any special listing conditions imposed by the property owner(s). As applicable, we make no representation as to the condition of the property (or properties) in question. (path: G:\1 - Projects\St George\Parry-Travis\1 - Flyers\WashingtonPky-SiennaHillsBlvd)