



FOR LEASE
Gladiola Distribution Center
525 South Gladiola Street
Salt Lake City, Utah



FOR LEASE
Gladiola Distribution Center
525 South Gladiola Street
Salt Lake City, Utah



THE
ROMNEY GROUP

\$0.39 PSF, NNN LEASE RATE



BUILDING A COMPLETION ESTIMATED Q2 2017

Property Highlights

- 313,500 SF total square feet
Building A: 156,750 SF
Building B: 156,750 SF
- Divisible to $\pm 31,000$ SF
- 30' clear height
- 57'x55' column spacing
- ESFR Fire Suppression
- 70' concrete apron | 329' 6" truck court
- 2,500 amps, 277/480 volt, 3-phase power
- 275' building depth
- 28 (9'x10') dock high doors per building
- 4 (10'x12') ground level doors per building
- Zoned M-2
- Rail spur possible to site
- Within 4 miles to both Salt Lake International Airport and Union Pacific Intermodal Hub
- Access to I-80 via Gladiola Street, Pioneer Road and 500 South Redwood Road

Tom Freeman
Executive Director
+1 801 303 5449
tffreeman@comre.com

Travis Healey
Senior Director
+1 801 303 5565
thealey@comre.com

Gina Moore
Director
+1 801 303 5510
gmoore@comre.com

170 South Main Street Suite 1600
Salt Lake City, UT 84101
Main +1 801 322 2000
Fax +1 801 322 2040
comre.com

Tom Freeman
Executive Director
+1 801 303 5449
tffreeman@comre.com

Travis Healey
Senior Director
+1 801 303 5565
thealey@comre.com

Gina Moore
Director
+1 801 303 5510
gmoore@comre.com

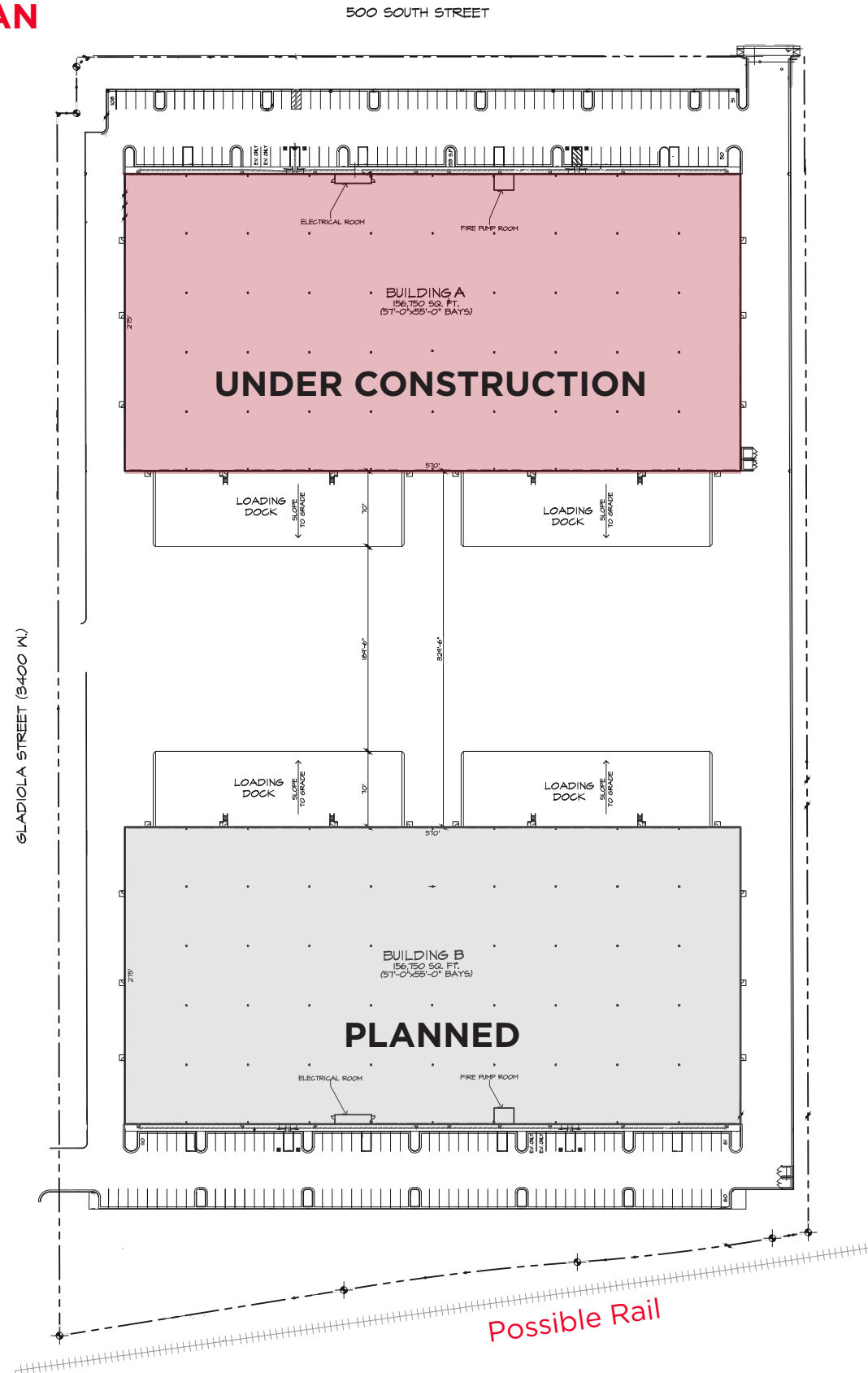
170 South Main Street Suite 1600
Salt Lake City, UT 84101
Main +1 801 322 2000
Fax +1 801 322 2040
comre.com

Independently Owned and Operated / A Member of the Cushman & Wakefield Alliance

Cushman & Wakefield Copyright 2017. No warranty or representation, express or implied, is made to the accuracy or completeness of the information contained herein, and same is submitted subject to errors, omissions, change of price, rental or other conditions, withdrawal without notice, and to any special listing conditions imposed by the property owner(s). As applicable, we make no representation as to the condition of the property (or properties) in question.
(path: G:\1 - Projects\Freeman, T\1 - Flyers\525sGladiolaStreet)

Independently Owned and Operated / A Member of the Cushman & Wakefield Alliance

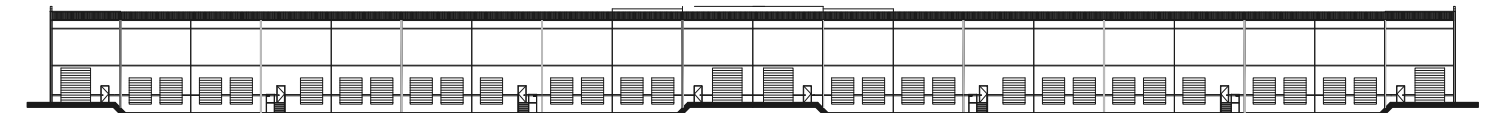
SITE PLAN



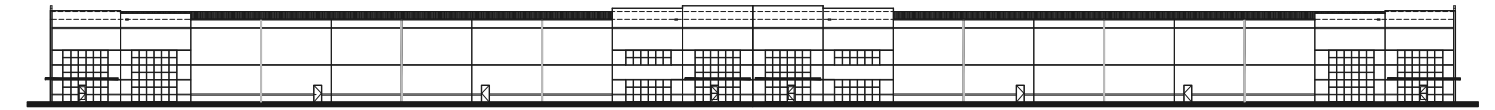
EXTERIOR ELEVATION



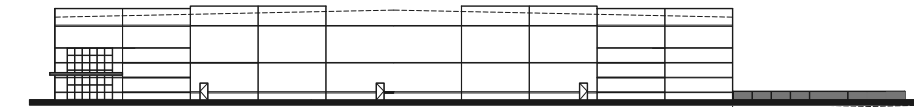
East Elevation



South Elevation



North Elevation



West Elevation

CONSTRUCTION STATUS: WALLS TILTED ON BUILDING A

