



**CUSHMAN &  
WAKEFIELD**  
Commerce

FOR SUBLEASE

**6850 N Durango Dr., Suite 208-210**  
Las Vegas, Nevada

## CENTENNIAL HILLS MEDICAL PLAZA I



For Sublease is suites 208 & 210 consisting of  $\pm 6,816$  SF located within the Centennial Hills Medical Plaza I. The property is located at 6850 North Durango Drive, Las Vegas, NV 89149 and is on the Campus of the Centennial Hills Hospital situated on .67 acres. Suites 208 & 210 is comprised of multiple exam rooms, two large waiting areas with patient check in. The office has five (5) single restrooms.

The Centennial Hills Medical Plaza is located is on the Campus of the Centennial Hills Hospital with direct access and high visibility to the I-95 and I-215 Freeways.

### Property Highlights

- \$1.60/SF NNN
- Sublease ends 06/30/2018
- Ample parking
- $\pm 6,816$  SF
- Large built in patient check in area
- Highly visible
- Immediate access to the I-95 & I-215



**Dan Palmeri, SIOR**  
Senior Director  
+1 702 688 6909  
dpalmeri@comre.com

**Natalie Wainwright**  
Associate  
+1 702 688 6939  
nwainwright@comre.com

3773 Howard Hughes Parkway Suite 100S  
Las Vegas, Nevada 89169  
Main +1 702 796 7900  
Fax +1 702 796 7920  
**comre.com**

*Independently Owned and Operated / A Member of the Cushman & Wakefield Alliance*

Cushman & Wakefield Copyright 2016. No warranty or representation, express or implied, is made to the accuracy or completeness of the information contained herein, and same is submitted subject to errors, omissions, change of price, rental or other conditions, withdrawal without notice, and to any special listing conditions imposed by the property owner(s). As applicable, we make no representation as to the condition of the property (or properties) in question.  
(path: G:\1 - Projects\Las Vegas Office\Palmeri\_Dan\1 - Flyers\CentennialHillsMedicalPlazaI)

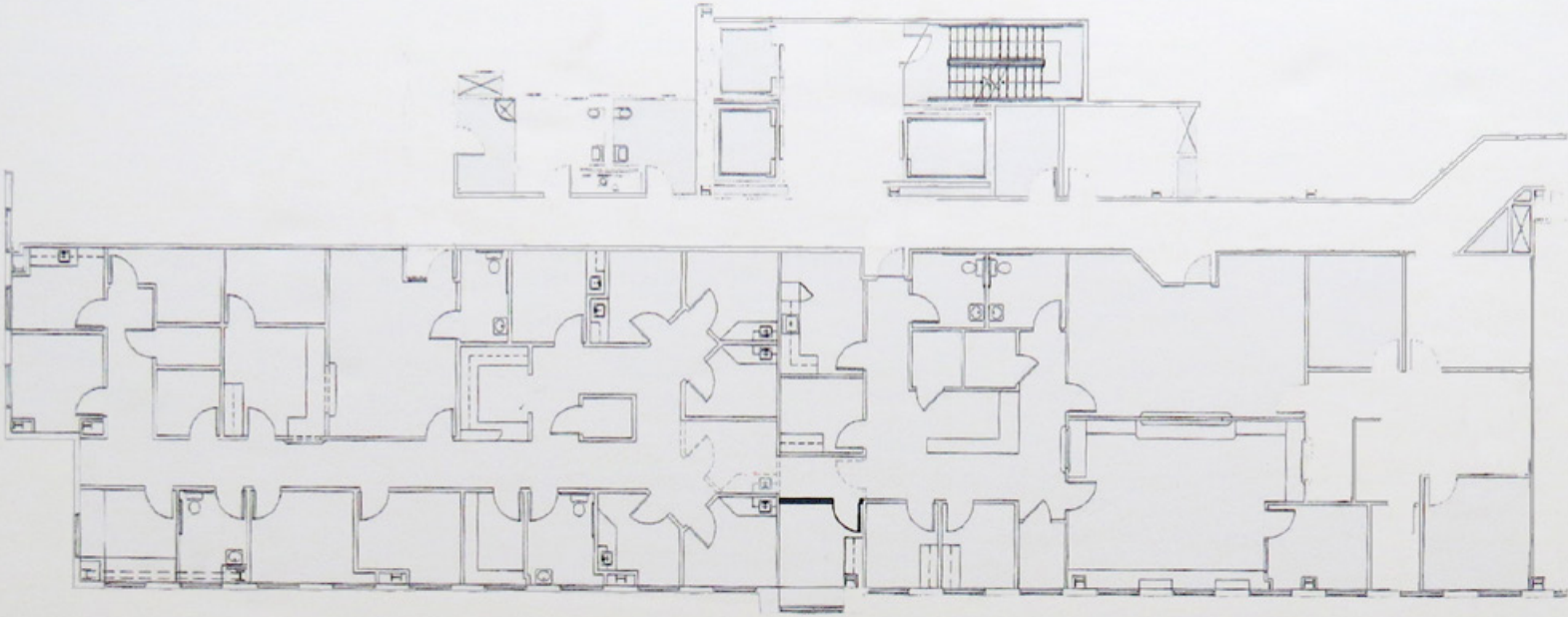




**CUSHMAN &  
WAKEFIELD**  
Commerce

FOR SUBLEASE

**6850 N Durango Dr., Suite 208-210**  
Las Vegas, Nevada



**Dan Palmeri, SIOR**  
Senior Director  
+1 702 688 6909  
dpalmeri@comre.com

**Natalie Wainwright**  
Associate  
+1 702 688 6939  
nwainwright@comre.com

3773 Howard Hughes Parkway Suite 100S  
Las Vegas, Nevada 89169  
Main +1 702 796 7900  
Fax +1 702 796 7920  
**comre.com**

*Independently Owned and Operated / A Member of the Cushman & Wakefield Alliance*

Cushman & Wakefield Copyright 2016. No warranty or representation, express or implied, is made to the accuracy or completeness of the information contained herein, and same is submitted subject to errors, omissions, change of price, rental or other conditions, withdrawal without notice, and to any special listing conditions imposed by the property owner(s). As applicable, we make no representation as to the condition of the property (or properties) in question.  
(path: G:\1 - Projects\Las Vegas Office\Palmeri\_Dan\1 - Flyers\CentennialHillsMedicalPlazaI)





**CUSHMAN &  
WAKEFIELD**  
Commerce

FOR SUBLEASE

**6850 N Durango Dr., Suite 208-210**  
Las Vegas, Nevada



**Dan Palmeri, SIOR**  
Senior Director  
+1 702 688 6909  
dpalmeri@comre.com

**Natalie Wainwright**  
Associate  
+1 702 688 6939  
nwainwright@comre.com

3773 Howard Hughes Parkway Suite 100S  
Las Vegas, Nevada 89169  
Main +1 702 796 7900  
Fax +1 702 796 7920  
**comre.com**

*Independently Owned and Operated / A Member of the Cushman & Wakefield Alliance*

Cushman & Wakefield Copyright 2016. No warranty or representation, express or implied, is made to the accuracy or completeness of the information contained herein, and same is submitted subject to errors, omissions, change of price, rental or other conditions, withdrawal without notice, and to any special listing conditions imposed by the property owner(s). As applicable, we make no representation as to the condition of the property (or properties) in question.  
(path: G:\1 - Projects\Las Vegas Office\Palmeri\_Dan\1 - Flyers\CentennialHillsMedicalPlazaI)