



**CUSHMAN &  
WAKEFIELD**  
Commerce

FOR LEASE

# MARBeya BUSINESS PARK

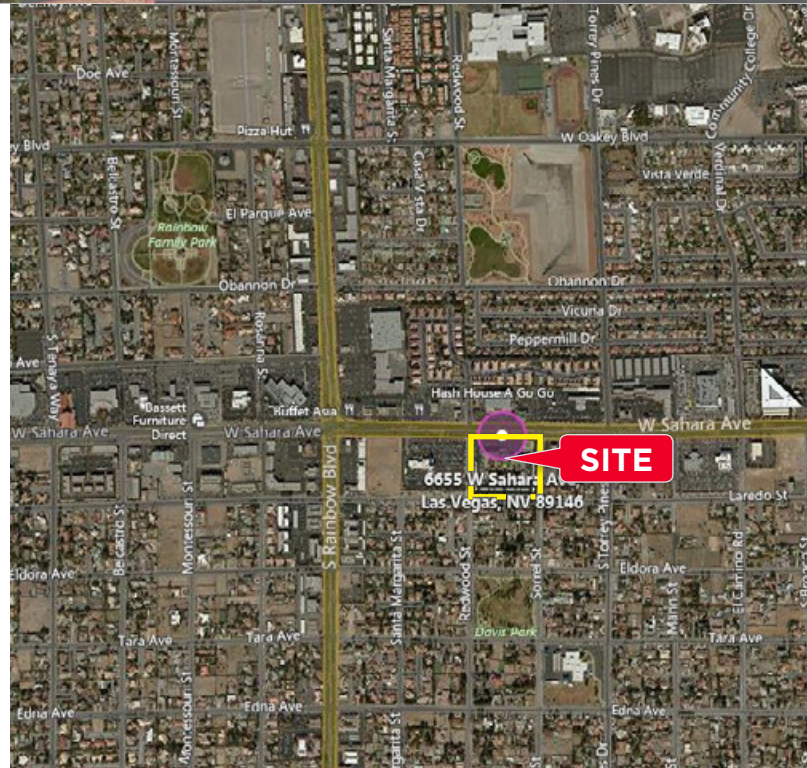
6655 W. SAHARA AVE. / LAS VEGAS, NV 89146



## Property Highlights

Well maintained Mediterranean architecture office complex consists of four 2-story buildings and a single story office/retail pad. Located along the busy West Sahara corridor, Marbeya Business Park is surrounded by numerous amenities and is situated along the RTC Transit route, "Sahara Express." Marbeya Business Park is centrally located on the west side of the valley with excellent visibility on W. Sahara Ave. Most suites in the main building face out to a beautifully landscaped courtyard with outdoor eating areas with umbrellas. Marbeya Business Park features stable ownership, onsite property management, security and leasing.

- West Sahara frontage
- Numerous amenities nearby
- On site management, leasing and security
- Aggressive/stable ownership
- 2nd generation space for quick move in
- Spec suites available
- Ample parking
- Beautifully maintained common areas
- Starting rates at \$1.15/SF/Month MG



**Nick Barber**  
Director  
+1 702 688 6937  
nbarber@comre.com

**Jeremy Foley**  
Director  
+1 702 688 6938  
jfoley@comre.com

**Paula Lea, CCIM**  
Associate Director  
+1 702 688 6867  
plea@comre.com

3773 Howard Hughes Pkwy.,  
Suite 100 S  
Las Vegas, NV 89169  
Main +1 702 796 7900  
Fax +1 702 796 7920  
**comre.com**

*Independently Owned and Operated / A Member of the Cushman & Wakefield Alliance*

Cushman & Wakefield Copyright 2015. No warranty or representation, express or implied, is made to the accuracy or completeness of the information contained herein, and same is submitted subject to errors, omissions, change of price, rental or other conditions, withdrawal without notice, and to any special listing conditions imposed by the property owner(s). As applicable, we make no representation as to the condition of the property (or properties) in question.

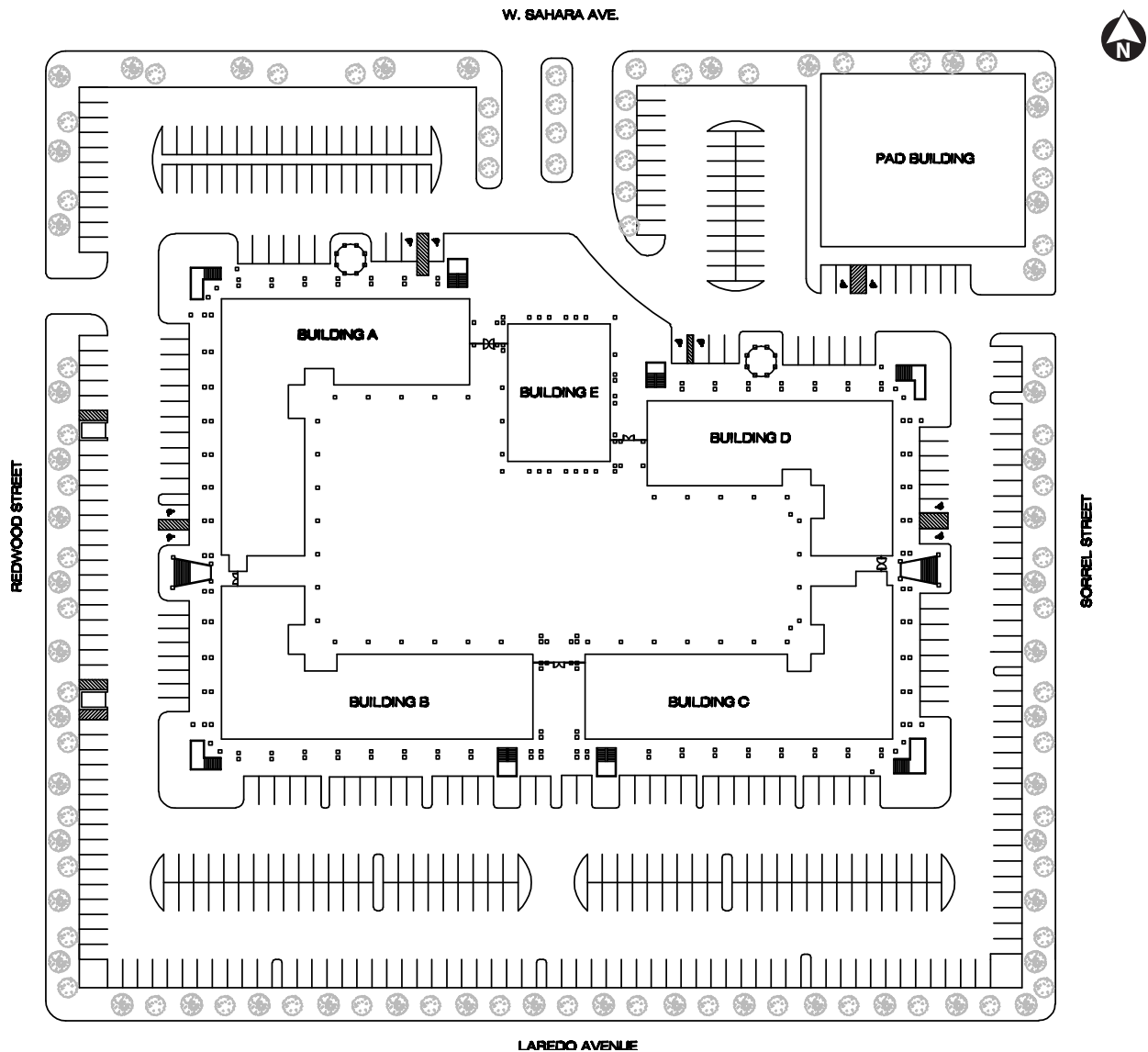


**CUSHMAN &  
WAKEFIELD**  
Commerce

FOR LEASE

# MARBeya BUSINESS PARK

6655 W. SAHARA AVE. / LAS VEGAS, NV 89146



SUITE	RSF	RATE
A 212	1,247	\$1.15/SF/MO MG
C 214	1,719	\$1.15/SF/MO MG
D 200	2,522	\$1.15/SF/MO MG

**Nick Barber**  
Director  
+1 702 688 6937  
nbarber@comre.com

**Jeremy Foley**  
Director  
+1 702 688 6938  
jfoley@comre.com

**Paula Lea, CCIM**  
Associate Director  
+1 702 688 6867  
plea@comre.com

3773 Howard Hughes Pkwy.,  
Suite 100 S  
Las Vegas, NV 89169  
Main +1 702 796 7900  
Fax +1 702 796 7920  
**comre.com**

*Independently Owned and Operated / A Member of the Cushman & Wakefield Alliance*

Cushman & Wakefield Copyright 2015. No warranty or representation, express or implied, is made to the accuracy or completeness of the information contained herein, and same is submitted subject to errors, omissions, change of price, rental or other conditions, withdrawal without notice, and to any special listing conditions imposed by the property owner(s). As applicable, we make no representation as to the condition of the property (or properties) in question.



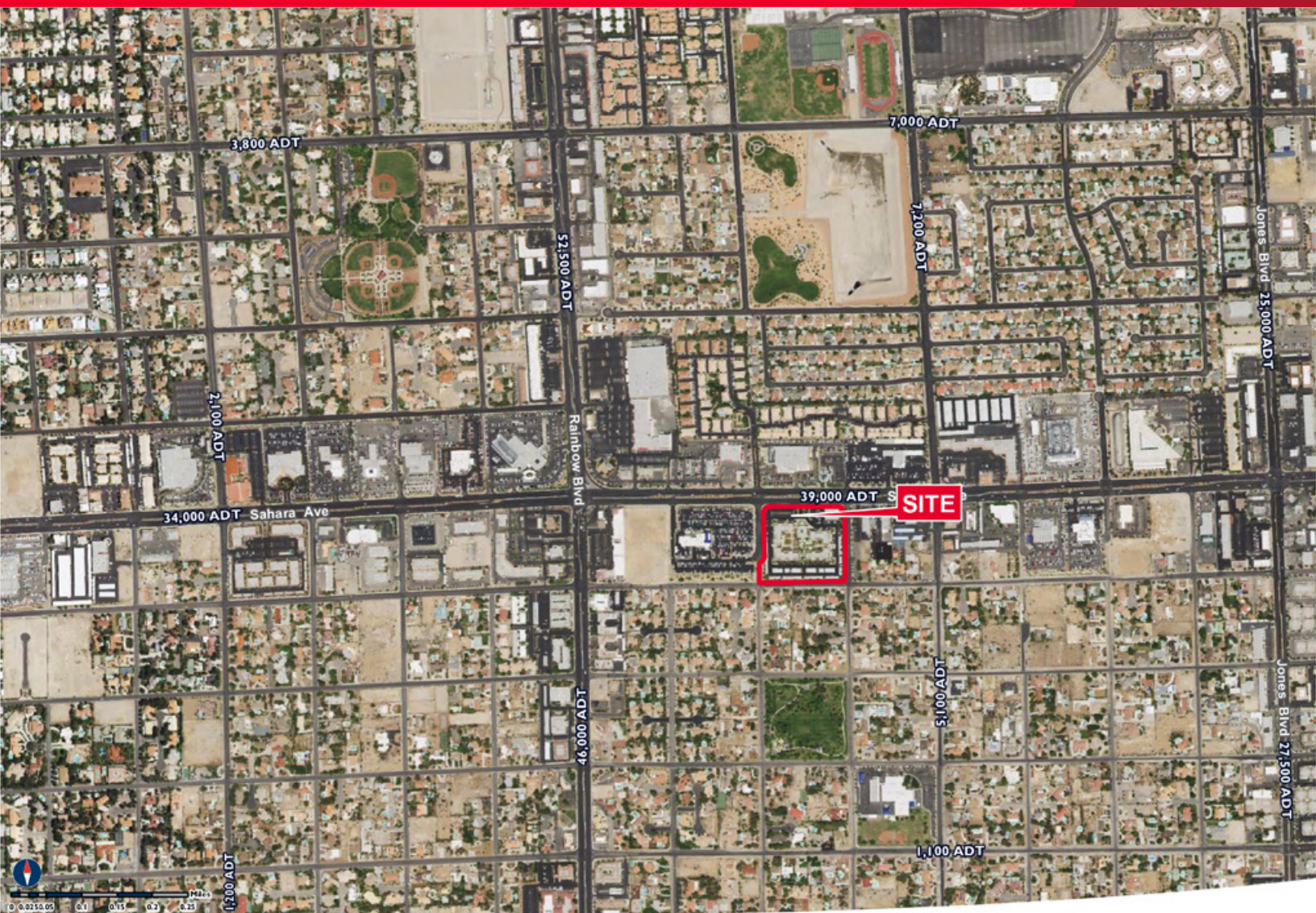


**CUSHMAN &  
WAKEFIELD**  
Commerce

FOR LEASE

# MARBeya BUSINESS PARK

6655 W. SAHARA AVE. / LAS VEGAS, NV 89146



**Nick Barber**  
Director  
+1 702 688 6937  
nbarber@comre.com

**Jeremy Foley**  
Director  
+1 702 688 6938  
jfoley@comre.com

**Paula Lea, CCIM**  
Associate Director  
+1 702 688 6867  
plea@comre.com

3773 Howard Hughes Pkwy.,  
Suite 100 S  
Las Vegas, NV 89169  
Main +1 702 796 7900  
Fax +1 702 796 7920  
**comre.com**

*Independently Owned and Operated / A Member of the Cushman & Wakefield Alliance*

Cushman & Wakefield Copyright 2015. No warranty or representation, express or implied, is made to the accuracy or completeness of the information contained herein, and same is submitted subject to errors, omissions, change of price, rental or other conditions, withdrawal without notice, and to any special listing conditions imposed by the property owner(s). As applicable, we make no representation as to the condition of the property (or properties) in question.