



**CUSHMAN &  
WAKEFIELD**  
Commerce

OFFICE SPACE FOR SUBLEASE

## West Valley Corporate Park

6520 South 190th Street, Kent, Washington 98032

Cenveo.

ColorGraphics

BELOW MARKET RENT

### 11,699 - 33,949 SF Office Available for Sublease

#### Property Highlights

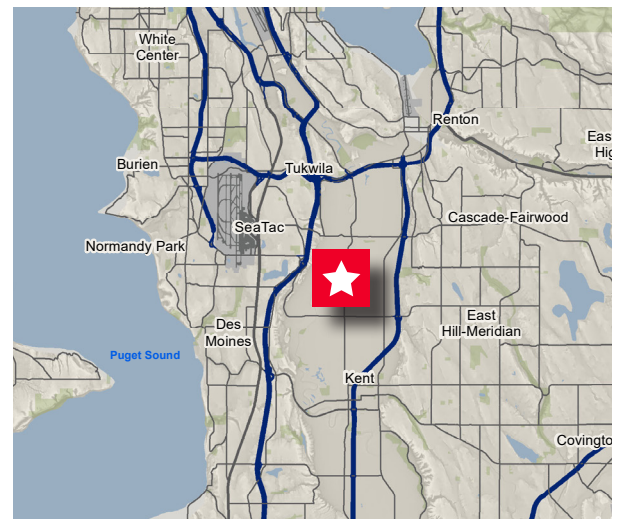
- Strong corporate image
- Generous parking available
- Easy access to I-5, I-405 and SR-167
- Flexible terms for one year or through November 30, 2022
- First floor space and second floor space can be leased individually or together for a total of 33,949 SF

#### First Floor Space

- 11,699 SF
- Sublease rate: \$15.00 gross (includes utilities, excludes janitorial)

#### Second Floor Space

- 22,250 SF
- Sublease rate: \$12.00 gross (includes utilities, excludes janitorial)



#### Tony Kusak

Executive Director  
+1 206 521 0263  
tony.kusak@comre.com

#### Kevin Smith

Associate Director  
+1 206 521 0281  
kevin.smith@comre.com

#### Connor Cree

Associate  
+1 206 521 0289  
connor.cree@comre.com

1420 Fifth Avenue, Suite 2600

Seattle, Washington 98101

Main +1 206 682 0666

Fax +1 206 521 0298

**comre.com**

*Independently Owned and Operated / A Member of the Cushman & Wakefield Alliance*

Cushman & Wakefield Copyright 2015. No warranty or representation, express or implied, is made to the accuracy or completeness of the information contained herein, and same is submitted subject to errors, omissions, change of price, rental or other conditions, withdrawal without notice, and to any special listing conditions imposed by the property owner(s). As applicable, we make no representation as to the condition of the property (or properties) in question.



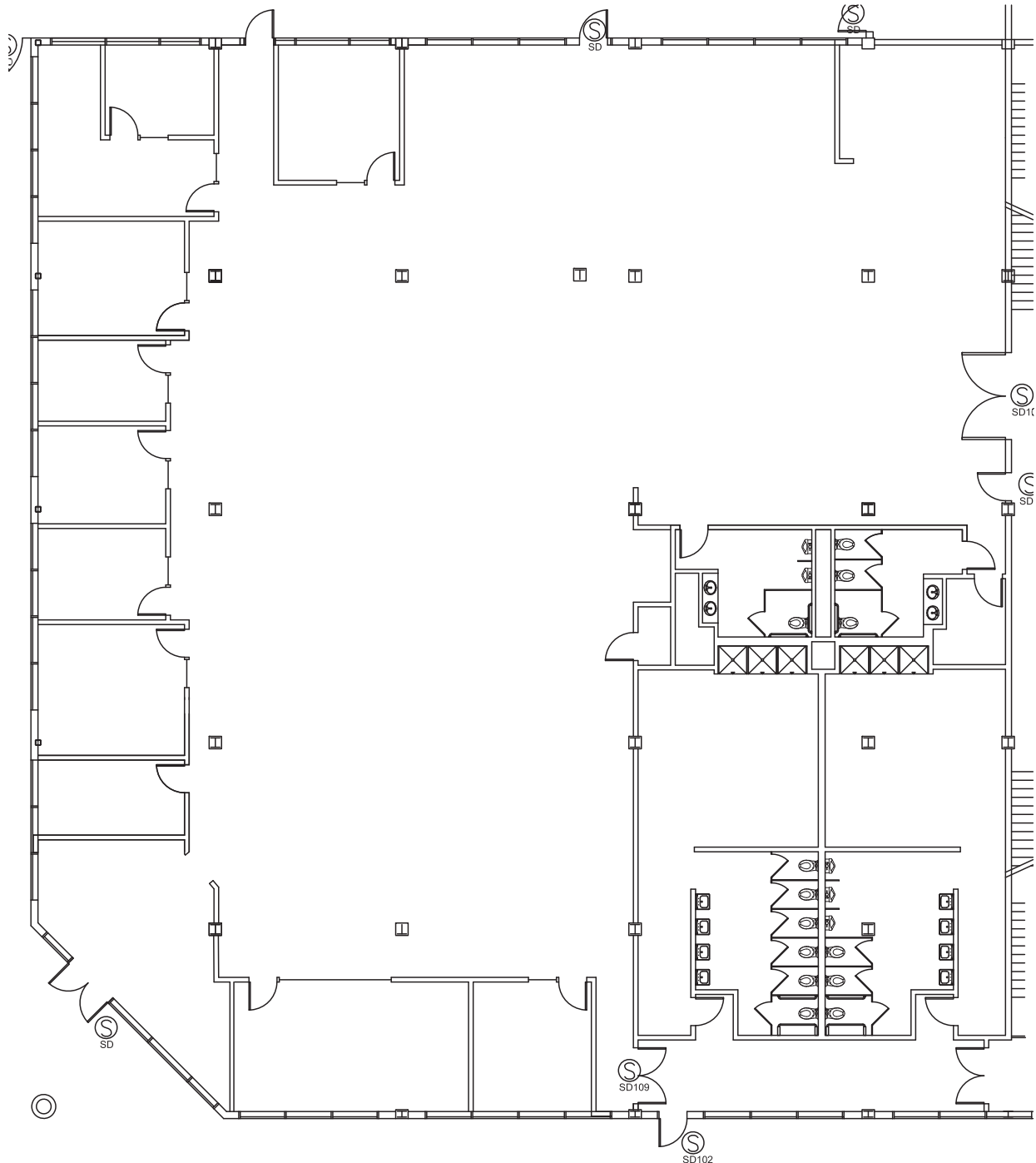
**CUSHMAN &  
WAKEFIELD**  
Commerce

OFFICE SPACE FOR SUBLEASE

## West Valley Corporate Park

6520 South 190th Street, Kent, Washington 98032

### First Floor Plan



**Tony Kusak**  
Executive Director  
+1 206 521 0263  
tony.kusak@comre.com

**Kevin Smith**  
Associate Director  
+1 206 521 0281  
kevin.smith@comre.com

**Connor Cree**  
Associate  
+1 206 521 0289  
connor.cree@comre.com

1420 Fifth Avenue, Suite 2600  
Seattle, Washington 98101  
Main +1 206 682 0666  
Fax +1 206 521 0298  
**comre.com**

*Independently Owned and Operated / A Member of the Cushman & Wakefield Alliance*

Cushman & Wakefield Copyright 2015. No warranty or representation, express or implied, is made to the accuracy or completeness of the information contained herein, and same is submitted subject to errors, omissions, change of price, rental or other conditions, withdrawal without notice, and to any special listing conditions imposed by the property owner(s). As applicable, we make no representation as to the condition of the property (or properties) in question.



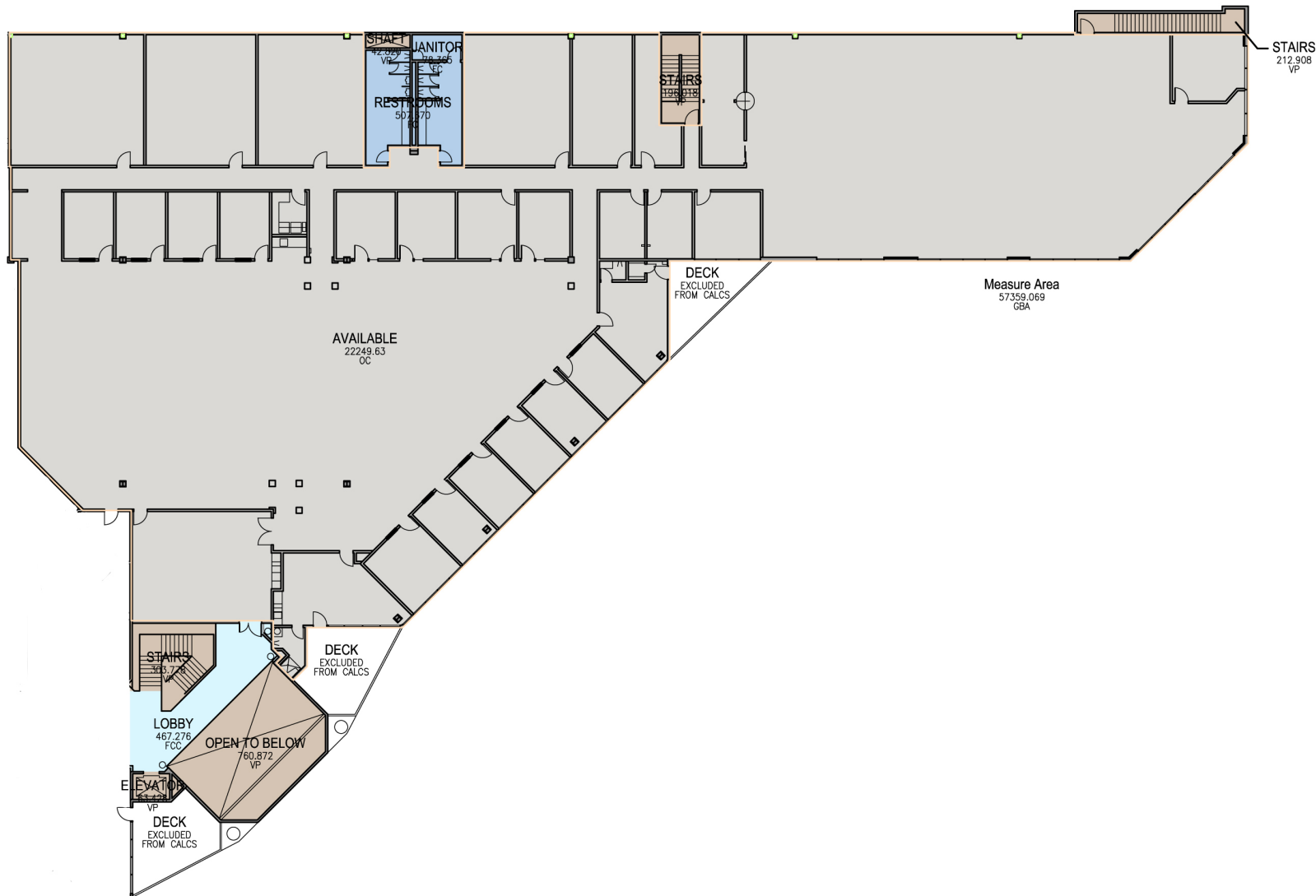
**CUSHMAN &  
WAKEFIELD**  
Commerce

OFFICE SPACE FOR SUBLEASE

## West Valley Corporate Park

6520 South 190th Street, Kent, Washington 98032

### Second Floor Plan



**Tony Kusak**  
Executive Director  
+1 206 521 0263  
tony.kusak@comre.com

**Kevin Smith**  
Associate Director  
+1 206 521 0281  
kevin.smith@comre.com

**Connor Cree**  
Associate  
+1 206 521 0289  
connor.cree@comre.com

1420 Fifth Avenue, Suite 2600  
Seattle, Washington 98101  
Main +1 206 682 0666  
Fax +1 206 521 0298  
**comre.com**

*Independently Owned and Operated / A Member of the Cushman & Wakefield Alliance*

Cushman & Wakefield Copyright 2015. No warranty or representation, express or implied, is made to the accuracy or completeness of the information contained herein, and same is submitted subject to errors, omissions, change of price, rental or other conditions, withdrawal without notice, and to any special listing conditions imposed by the property owner(s). As applicable, we make no representation as to the condition of the property (or properties) in question.