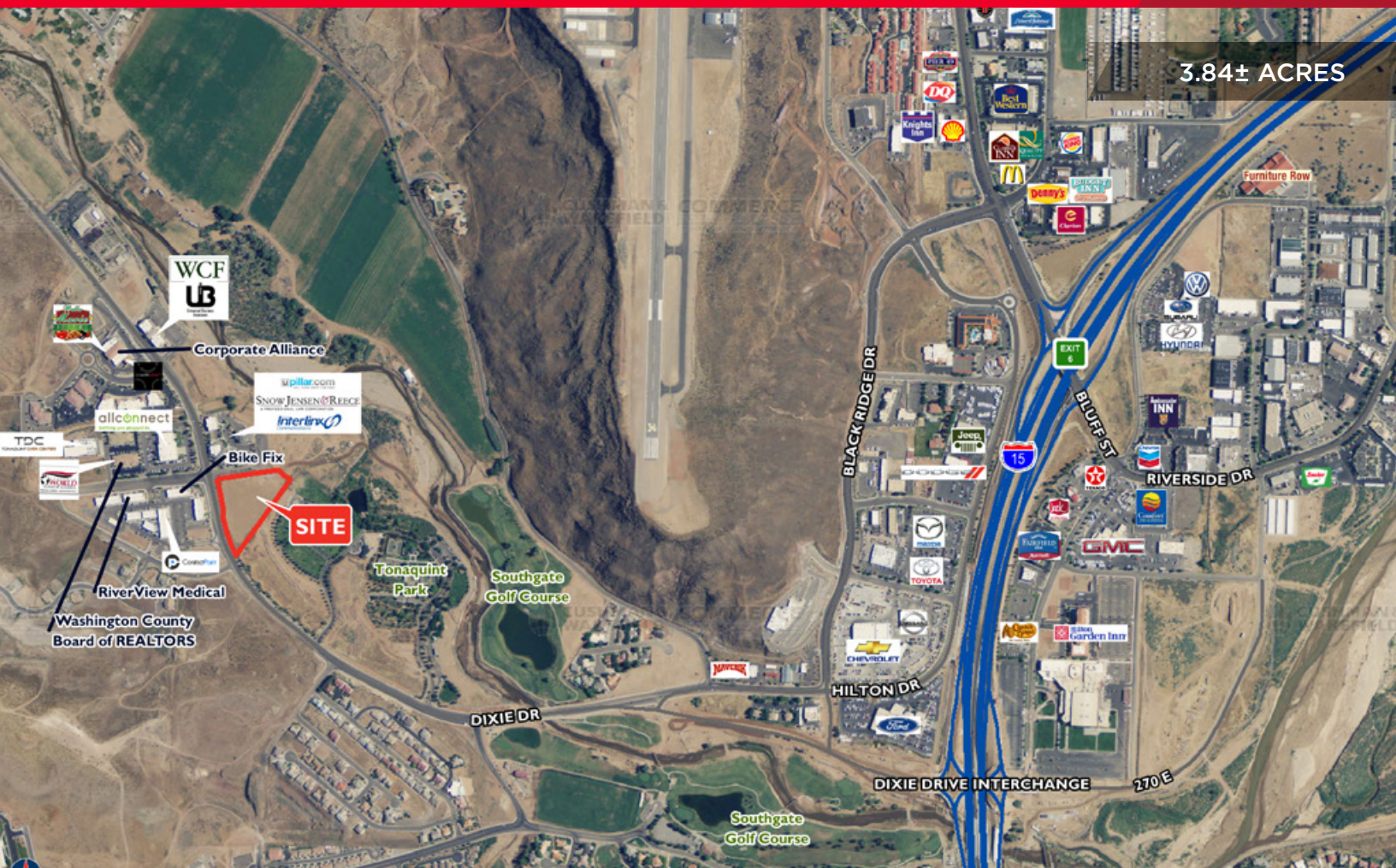




FOR SALE

Tonaquint Landing

Approx. 1671 South Dixie Drive / St. George, Utah



Property Highlights

- Size: 3.84± acres
- Sales Price: \$1,500,000
- Zoned: PD-COM
- Good location for Medical, Office, Retail, C-store and Restaurant's
- Commercial future hard corner
- Frontage & visibility on Dixie Drive
- Redundant high speed fiber
- Just off new Dixie Drive I-15 Interchange



Tom Callister, SIOR
Director
+1 435 986 4709
tom.callister@cushwake.com

Travis J. Parry, SIOR, CCIM
Senior Director
+1 435 986 4708
travis.parry@cushwake.com

Andrew L. Sorensen, CCIM
Director
+1 435 986 4705
andrew.sorensen@cushwake.com

2 West St. George Blvd, Suite 10
St. George, Utah 84770
Main +1 435 673 7111
Fax +1 435 673 7153
cushmanwakefield.com



**CUSHMAN &
WAKEFIELD**

FOR SALE

Tonaquint Landing

Approx. 1671 South Dixie Drive / St. George, Utah



Tom Callister, SIOR
Director
+1 435 986 4709
tom.callister@cushwake.com

Travis J. Parry, SIOR, CCIM
Senior Director
+1 435 986 4708
travis.parry@cushwake.com

Andrew L. Sorensen, CCIM
Director
+1 435 986 4705
andrew.sorensen@cushwake.com

2 West St. George Blvd, Suite 10
St. George, Utah 84770
Main +1 435 673 7111
Fax +1 435 673 7153
cushmanwakefield.com