



Property Highlights

- **Available Office Size:**
Suite 201 – 7,000 SF
- **Lease Rate:**
\$1.35 SF NNN
- Class A office space
- Gorgeous finishes
- Underground parking
- **1GB fiber internet included!**
- Located in the technology hub of St. George
- Close proximity to the Tonaquint Data Center
- Easy access to I-15
- Less than 10 minute drive to all of St. George

Andrew L. Sorensen, CCIM
Director
+1 435 986 4705
asorensen@comre.com

Travis J. Parry, SIOR, CCIM
Senior Director
+1 435 986 4708
tparry@comre.com

2 West St. George Blvd, Suite 10
St. George, Utah 84770
Main +1 435 673 7111
Fax +1 435 673 7153
comre.com

Independently Owned and Operated / A Member of the Cushman & Wakefield Alliance

Cushman & Wakefield Copyright 2015. No warranty or representation, express or implied, is made to the accuracy or completeness of the information contained herein, and same is submitted subject to errors, omissions, change of price, rental or other conditions, withdrawal without notice, and to any special listing conditions imposed by the property owner(s). As applicable, we make no representation as to the condition of the property (or properties) in question. (path: G:\1 - Projects\St George\Sorensen, Andrew\1- Flyers\912w1600s_B.TonaquintCenter)



Suite 201



Andrew L. Sorensen, CCIM
Director
+1 435 986 4705
asorensen@comre.com

Travis J. Parry, SIOR, CCIM
Senior Director
+1 435 986 4708
tparry@comre.com

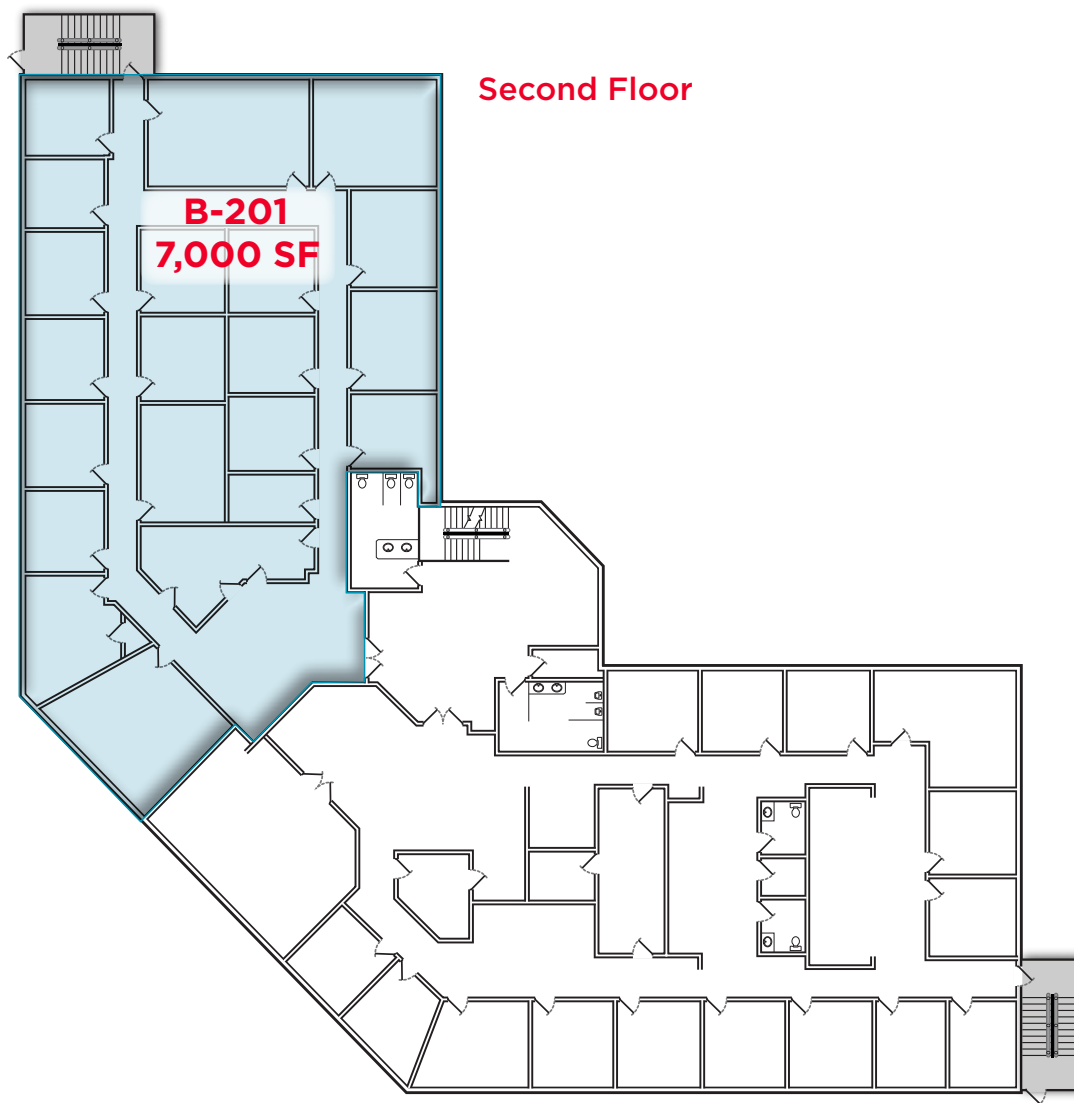
2 West St. George Blvd, Suite 10
St. George, Utah 84770
Main +1 435 673 7111
Fax +1 435 673 7153
comre.com

Independently Owned and Operated / A Member of the Cushman & Wakefield Alliance

Cushman & Wakefield Copyright 2015. No warranty or representation, express or implied, is made to the accuracy or completeness of the information contained herein, and same is submitted subject to errors, omissions, change of price, rental or other conditions, withdrawal without notice, and to any special listing conditions imposed by the property owner(s). As applicable, we make no representation as to the condition of the property (or properties) in question. (path: G:\1 - Projects\St George\Sorensen, Andrew\1- Flyers\912w1600s.B.TonaquintCenter)

Tonaquint Center

912 West 1600 South #B / St. George, Utah 84770



Andrew L. Sorensen, CCIM
Director
+1 435 986 4705
asorensen@comre.com

Travis J. Parry, SIOR, CCIM
Senior Director
+1 435 986 4708
tparry@comre.com

2 West St. George Blvd, Suite 10
St. George, Utah 84770
Main +1 435 673 7111
Fax +1 435 673 7153
comre.com

Independently Owned and Operated / A Member of the Cushman & Wakefield Alliance

Cushman & Wakefield Copyright 2015. No warranty or representation, express or implied, is made to the accuracy or completeness of the information contained herein, and same is submitted subject to errors, omissions, change of price, rental or other conditions, withdrawal without notice, and to any special listing conditions imposed by the property owner(s). As applicable, we make no representation as to the condition of the property (or properties) in question. (path: G:\1 - Projects\St George\Sorensen, Andrew\1- Flyers\912w1600s_B.TonaquintCenter)

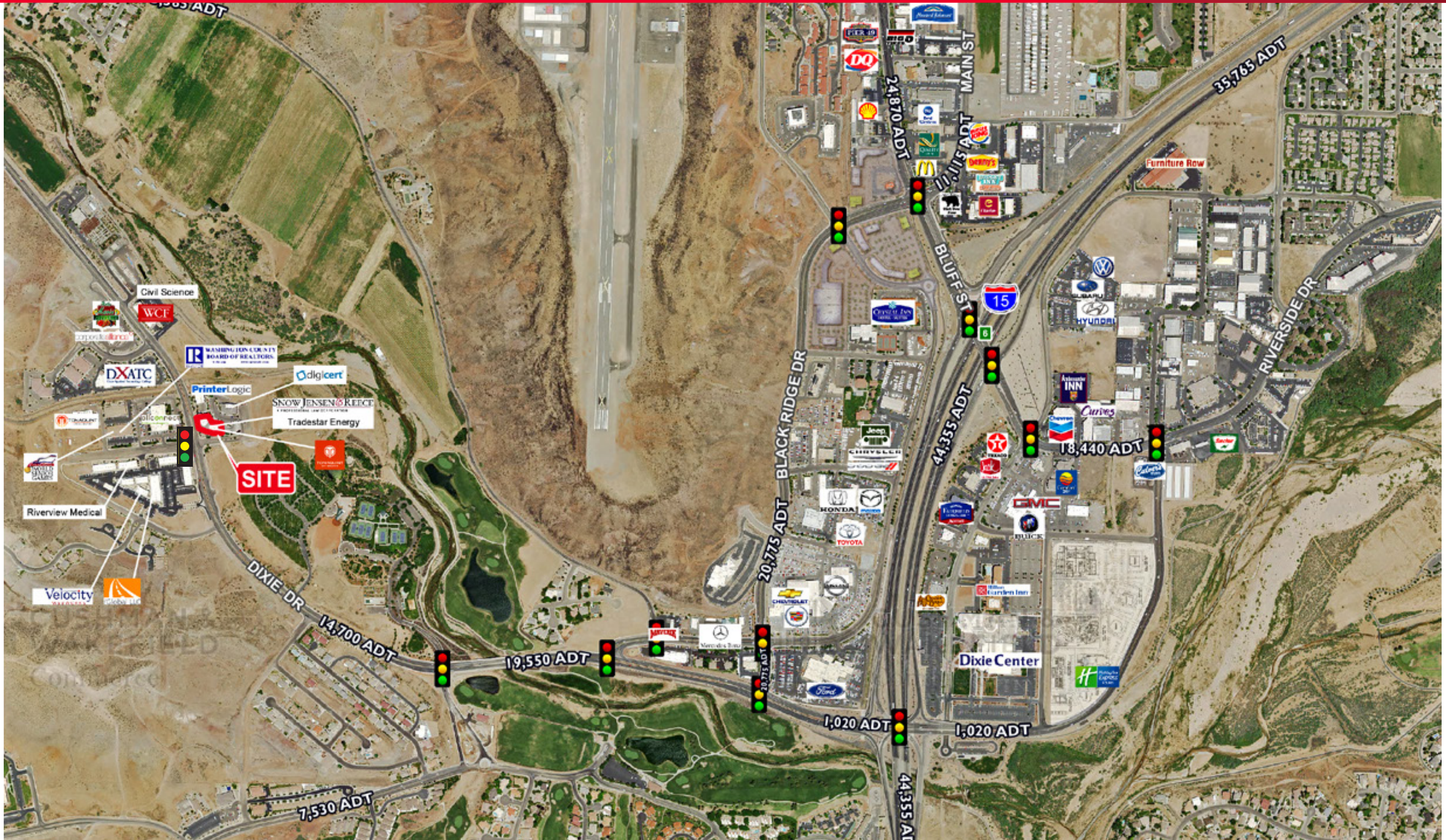


**CUSHMAN &
WAKEFIELD**
Commerce

FOR LEASE

Tonaquint Center

912 West 1600 South #B / St. George, Utah 84770



Andrew L. Sorensen, CCIM
Director
+1 435 986 4705
asorensen@comre.com

Travis J. Parry, SIOR, CCIM
Senior Director
+1 435 986 4708
tparry@comre.com

2 West St. George Blvd, Suite 10
St. George, Utah 84770
Main +1 435 673 7111
Fax +1 435 673 7153
comre.com

Independently Owned and Operated / A Member of the Cushman & Wakefield Alliance

Cushman & Wakefield Copyright 2015. No warranty or representation, express or implied, is made to the accuracy or completeness of the information contained herein, and same is submitted subject to errors, omissions, change of price, rental or other conditions, withdrawal without notice, and to any special listing conditions imposed by the property owner(s). As applicable, we make no representation as to the condition of the property (or properties) in question. (path: G:\1 - Projects\St George\Sorensen, Andrew\1- Flyers\912w1600s_B.TonaquintCenter)