

LARGE SALT LAKE CITY INTERNATIONAL AIRPORT DEVELOPMENT ACREAGE

2691 North 2200 West, Salt Lake City, Utah 84116

FOR SALE

\$35,120,000 (\$80,000/Acre)

PROPERTY FEATURES

- 439 Acres
- Zoning: Business Park (BP) in Salt Lake City
 - Air Cargo Terminals
 - Industrial
 - Office
 - Retail
 - Auto Rental
 - Parking
- 1 Mile North of Salt Lake City International Airport
- 1 Mile North of 2100 North I-215 Interchange



FOR MORE
INFORMATION
CONTACT

CHRIS TERRY
801.578.5585
cterry@ngacres.com

CAMRON CARPENTER
801.303.5457
ccarpenter@comre.com

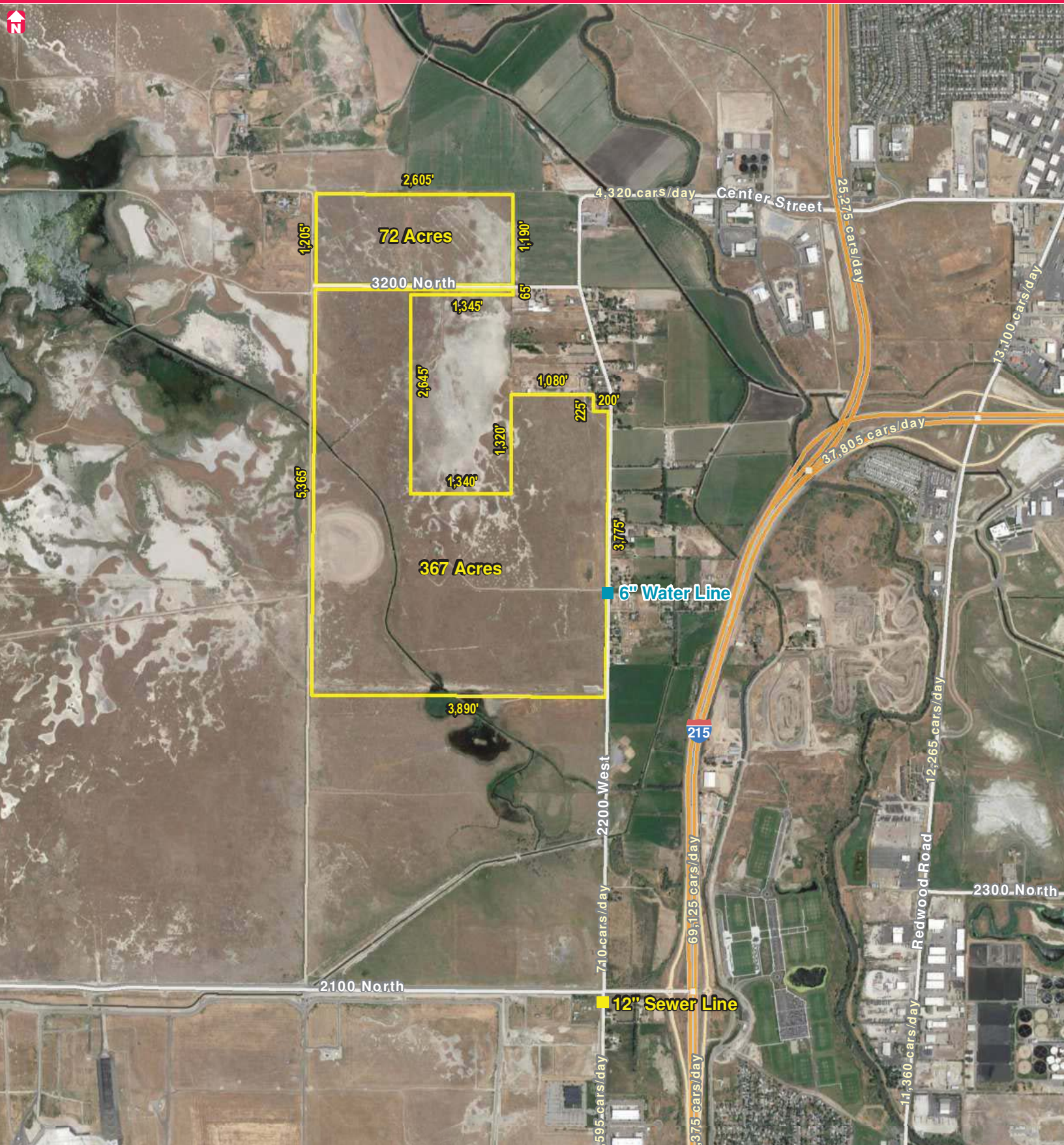
Newmark Grubb
ACRES

**CUSHMAN &
WAKEFIELD**
Commerce

376 East 400 South, Suite 120
Salt Lake City, Utah 84111
801.578.5555 | www.ngacres.com

LARGE SALT LAKE CITY INTERNATIONAL AIRPORT DEVELOPMENT ACREAGE

2691 North 2200 West, Salt Lake City, Utah 84116



 **Newmark Grubb**
ACRES

 **CUSHMAN & WAKEFIELD**
Commerce

376 East 400 South, Suite 120
Salt Lake City, Utah 84111
801.578.5555 | www.ngacres.com