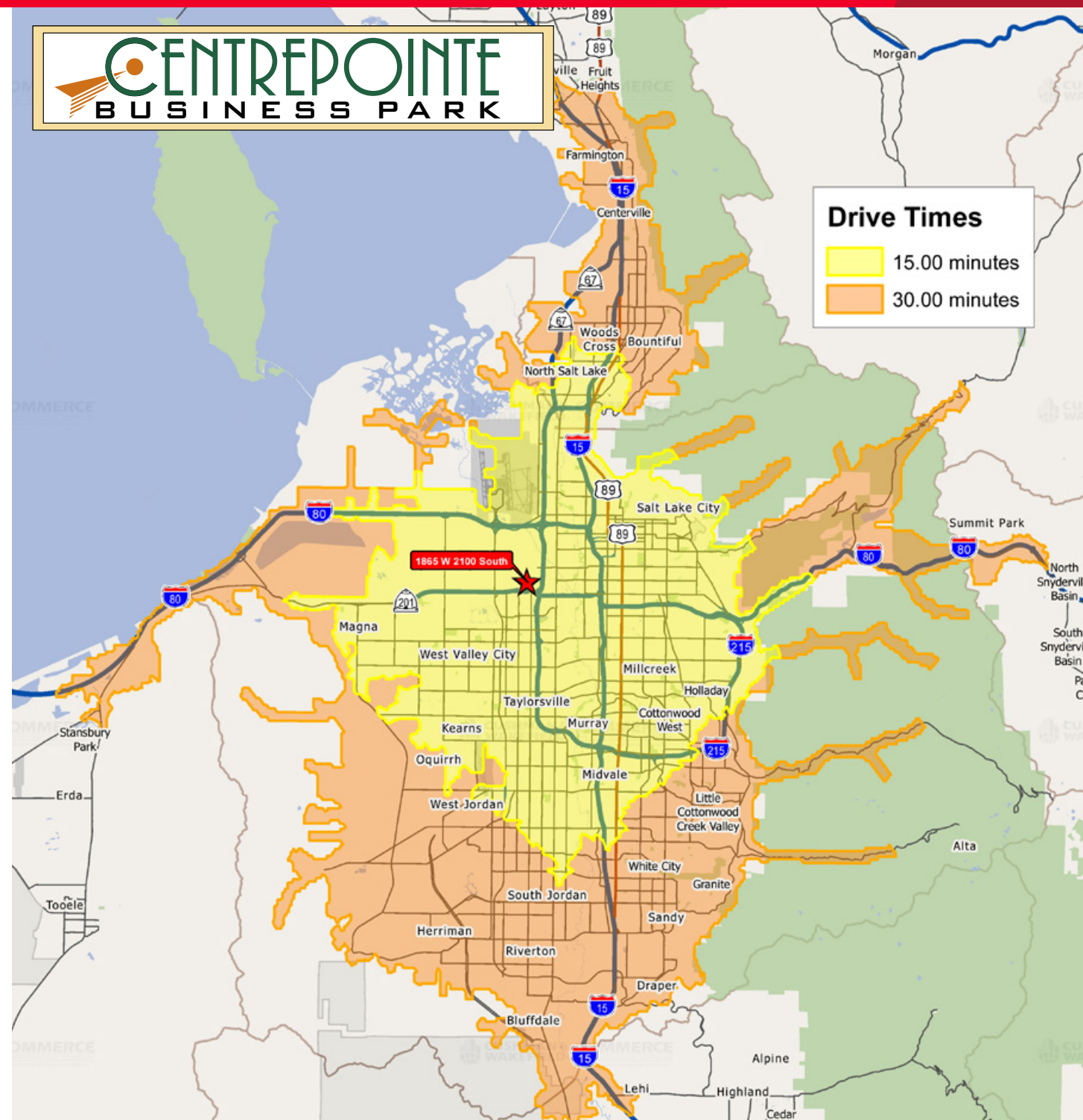


CentrePointe Business Park

1885 West 2100 South / Salt Lake City, Utah

CentrePointe Business Park

1885 West 2100 South / Salt Lake City, Utah



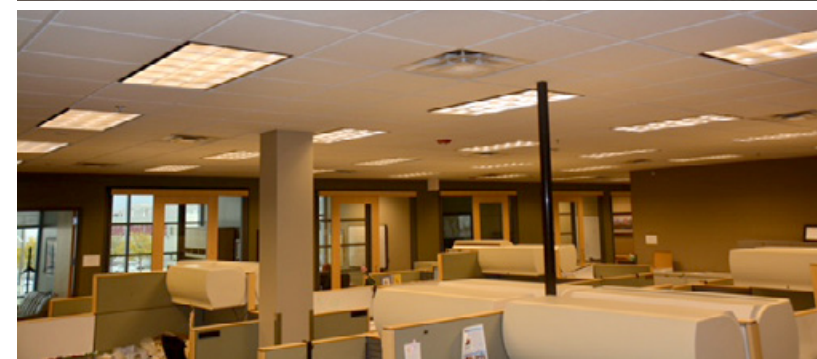
Chris Kirk, SIOR
Executive Director
+1 801 303 5495
ckirk@comre.com

Travis Yates
Associate
+1 801 303 5414
tyates@comre.com

170 South Main Street Suite 1600
Salt Lake City, UT 84101
Main +1 801 322 2000
Fax +1 801 322 2040
comre.com

Independently Owned and Operated / A Member of the Cushman & Wakefield Alliance

Cushman & Wakefield Copyright 2016. No warranty or representation, express or implied, is made to the accuracy or completeness of the information contained herein, and same is submitted subject to errors, omissions, change of price, rental or other conditions, withdrawal without notice, and to any special listing conditions imposed by the property owner(s). As applicable, we make no representation as to the condition of the property (or properties) in question.
(path: G:\1 - Projects\Smart, A\1 - Flyers\Centrepointe Business Park\2014\CentrePointe_Sublease_flyer)



**Sublease Rate: ~~\$19.00~~ Full Service
\$16.95**

Property Highlights

- Conveniently located at the intersection of Highway 201 and I-215 west
- 1st floor - 5354 RSF, 2nd floor - 5737 RSF
- Ample Parking
- Plug-n-play Opportunity with furniture
- Great build-out that provides a nice mix of open-space, offices, multiple conference rooms, breakroom



Chris Kirk, SIOR
Executive Director
+1 801 303 5495
ckirk@comre.com

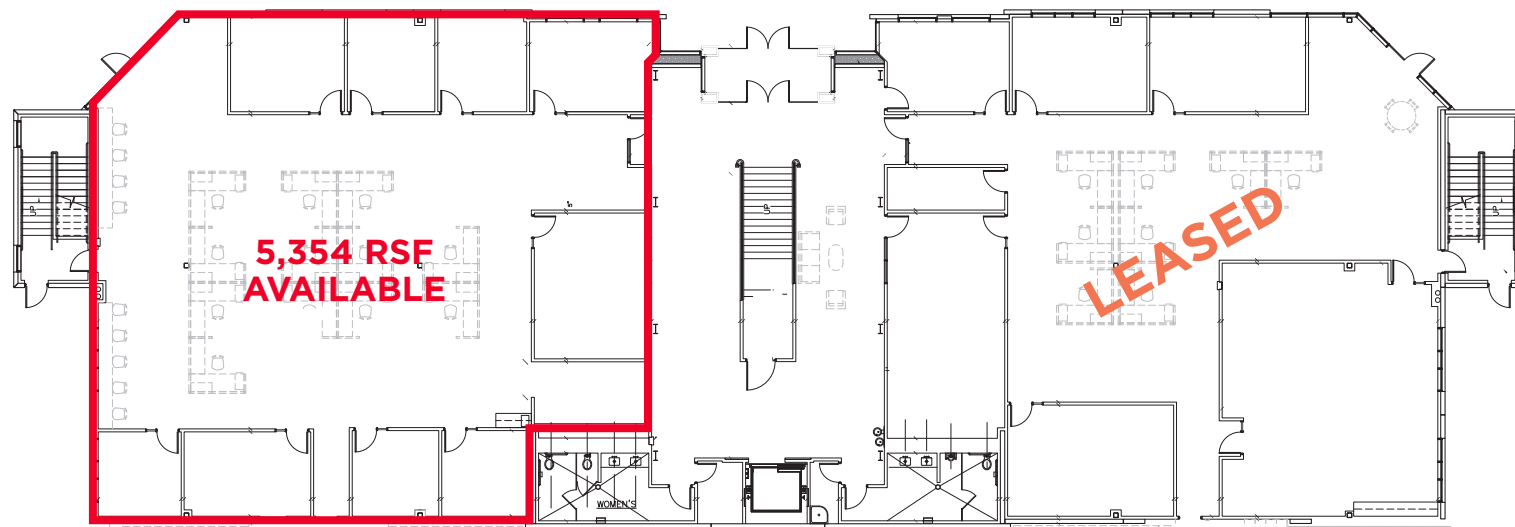
Travis Yates
Associate
+1 801 303 5414
tyates@comre.com

170 South Main Street Suite 1600
Salt Lake City, UT 84101
Main +1 801 322 2000
Fax +1 801 322 2040
comre.com

Independently Owned and Operated / A Member of the Cushman & Wakefield Alliance



1ST FLOOR



2ND FLOOR

