



**CUSHMAN &  
WAKEFIELD**  
Commerce

FOR SUBLEASE

## Kirkland Commons

8815 122nd Ave NE / Kirkland, WA

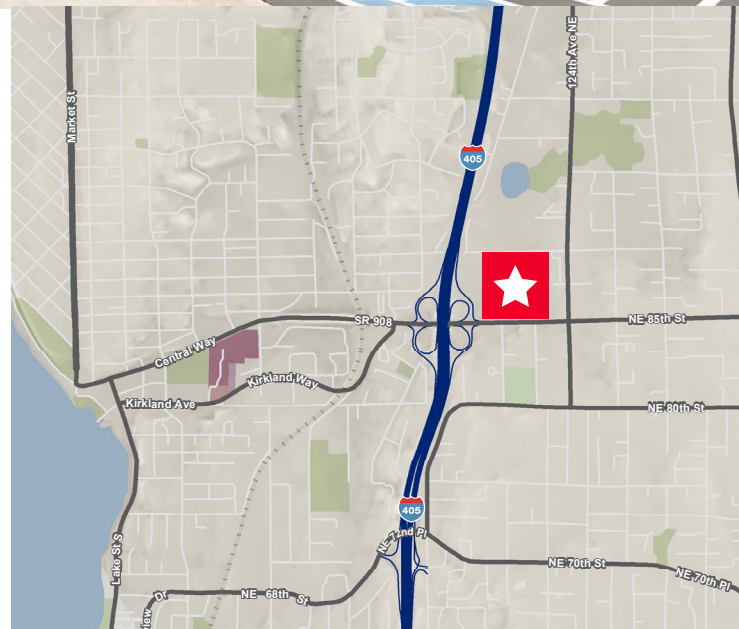
25,294 RSF SUBLEASE



### 25,294 SF Class A Office Space Sublease

#### Property Highlights

- Available 3/1/2017
- Sublease through 8/31/2018
- Rate: \$18.00/RSF NNN
- Estimated opex: \$8.95/RSF
- Divisible to +/- 10,000 RSF
- Parking ratio: 3.4/1,000 RSF at no cost
- Longer term available through Landlord
- Newly renovated lobby & common areas
- Excellent access to I-405 and downtown Kirkland



#### Trevor Youngren

Director

+1 206 521 0241

trevor.youngren@comre.com

1420 5th Ave, Suite 2600

Seattle, WA 98101

Main +1 206 682 0666

Fax +1 206 521 0298

**comre.com**

*Independently Owned and Operated / A Member of the Cushman & Wakefield Alliance*

Cushman & Wakefield Copyright 2015. No warranty or representation, express or implied, is made to the accuracy or completeness of the information contained herein, and same is submitted subject to errors, omissions, change of price, rental or other conditions, withdrawal without notice, and to any special listing conditions imposed by the property owner(s). As applicable, we make no representation as to the condition of the property (or properties) in question.



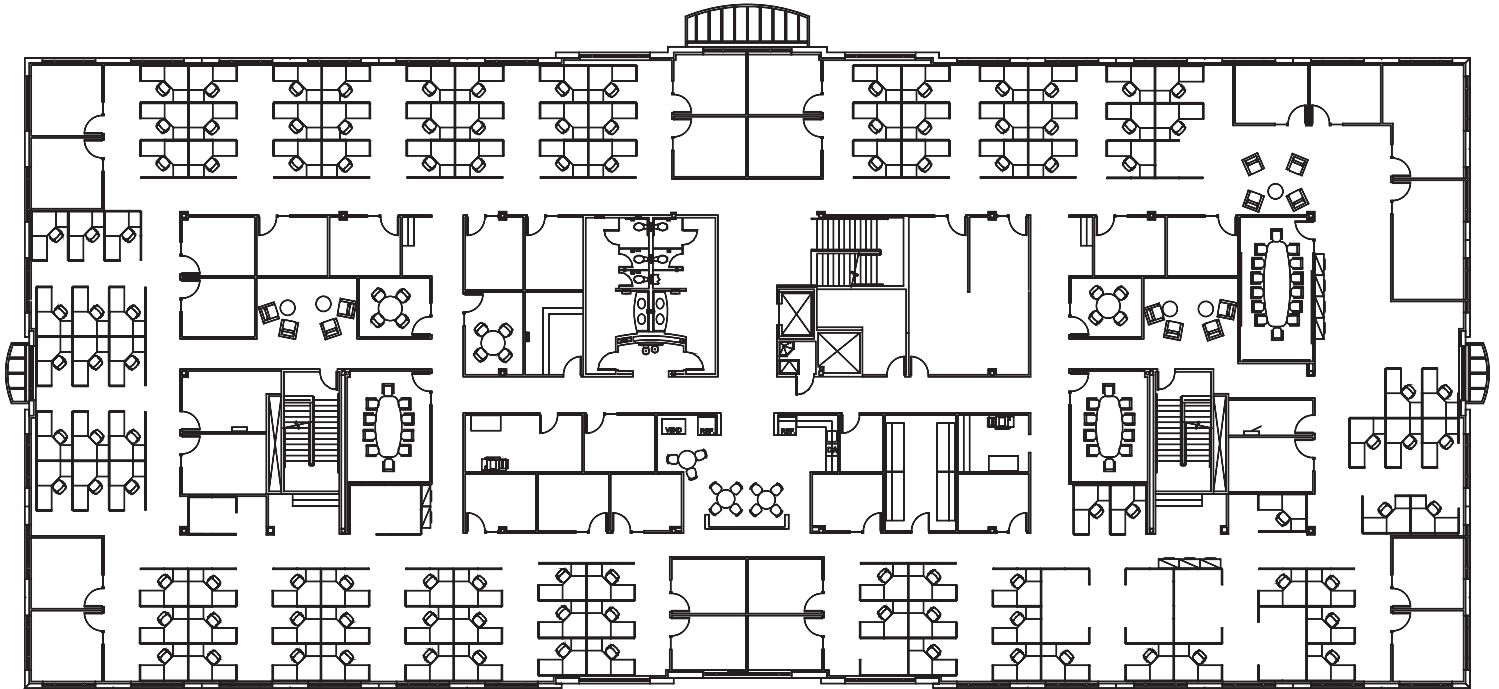
**CUSHMAN &  
WAKEFIELD**  
Commerce

FOR SUBLEASE

## Kirkland Commons

8815 122nd Ave NE / Kirkland, WA

**Suite 200: 25,294 RSF (Divisible)**



**Trevor Youngren**

Director

+1 206 521 0241

trevor.youngren@comre.com

1420 5th Ave, Suite 2600

Seattle, WA 98101

Main +1 206 682 0666

Fax +1 206 521 0298

**comre.com**

*Independently Owned and Operated / A Member of the Cushman & Wakefield Alliance*

Cushman & Wakefield Copyright 2015. No warranty or representation, express or implied, is made to the accuracy or completeness of the information contained herein, and same is submitted subject to errors, omissions, change of price, rental or other conditions, withdrawal without notice, and to any special listing conditions imposed by the property owner(s). As applicable, we make no representation as to the condition of the property (or properties) in question.