

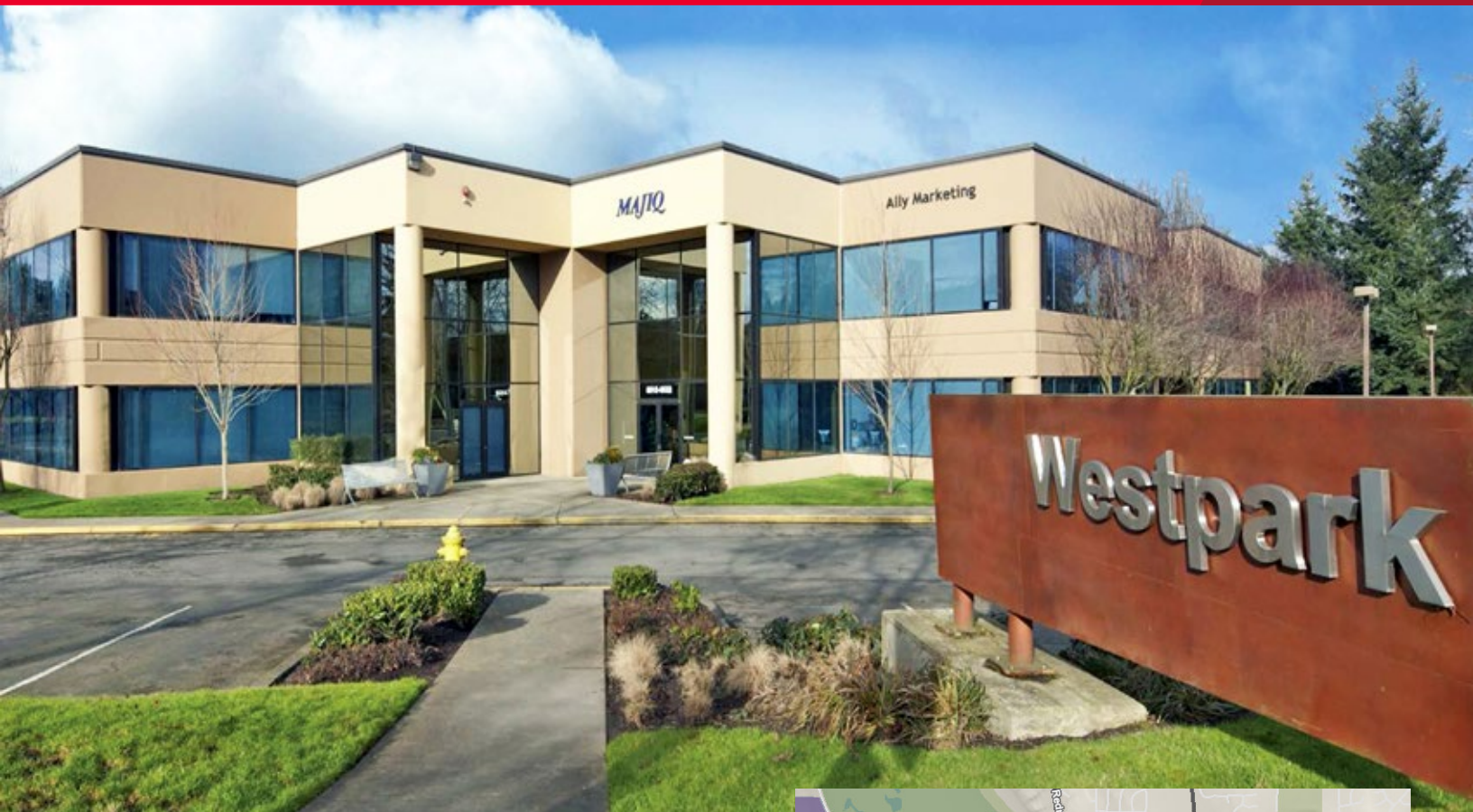


**CUSHMAN &
WAKEFIELD**
Commerce

FOR SUBLEASE

West Park - Bldg F

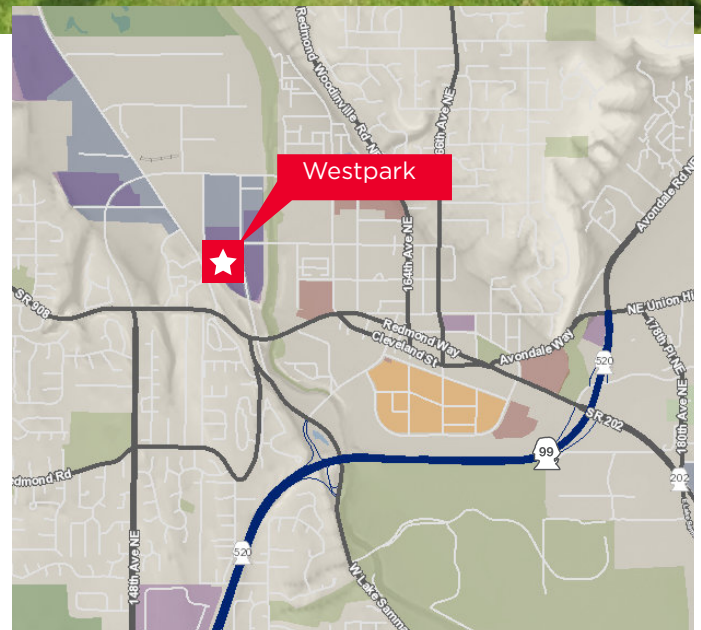
8353 154th Ave NE, Redmond, Washington



Property Highlights

- Approximately 2,000 sf
- Master lease expires January 31, 2018.
- Located near numerous amenities including Redmond Town Center and downtown Redmond
- Easy access to SR-520 and I-405
- Furniture included with the space
- Tech friendly layout and furnishings

\$21.00/sf Full Service



Brian Toy
Director
425 201 1224
Brian.Toy@comre.com

Taylor Hudson
Associate
425 201 1205
taylor.hudson@comre.com

10500 NE 8th Street, Suite 1125
Bellevue, WA
Main +1 425 455 4500
Fax +1 425 453 5381
comre.com

Independently Owned and Operated / A Member of the Cushman & Wakefield Alliance

Cushman & Wakefield Copyright 2015. No warranty or representation, express or implied, is made to the accuracy or completeness of the information contained herein, and same is submitted subject to errors, omissions, change of price, rental or other conditions, withdrawal without notice, and to any special listing conditions imposed by the property owner(s). As applicable, we make no representation as to the condition of the property (or properties) in question.



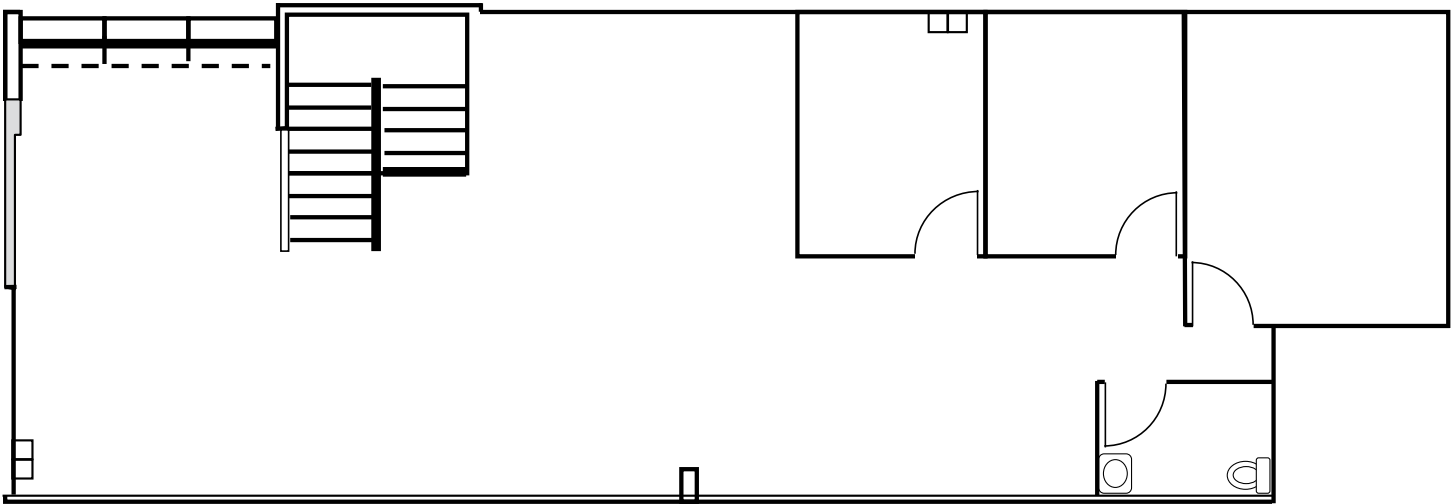
**CUSHMAN &
WAKEFIELD**
Commerce

FOR SUBLEASE

West Park - Bldg F

8353 154th Ave NE, Redmond, Washington

Suite 8353 B



Brian Toy
Director
425 201 1224
Brian.Toy@comre.com

Taylor Hudson
Associate
425 201 1205
taylor.hudson@comre.com

10500 NE 8th Street, Suite 1125
Bellevue, WA
Main +1 425 455 4500
Fax +1 425 453 5381
comre.com

Independently Owned and Operated / A Member of the Cushman & Wakefield Alliance

Cushman & Wakefield Copyright 2015. No warranty or representation, express or implied, is made to the accuracy or completeness of the information contained herein, and same is submitted subject to errors, omissions, change of price, rental or other conditions, withdrawal without notice, and to any special listing conditions imposed by the property owner(s). As applicable, we make no representation as to the condition of the property (or properties) in question.

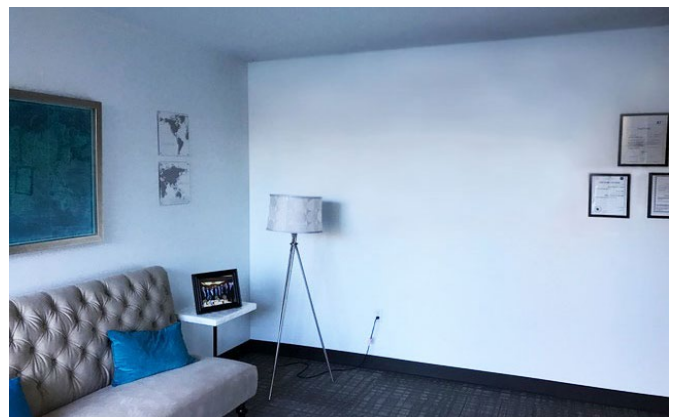
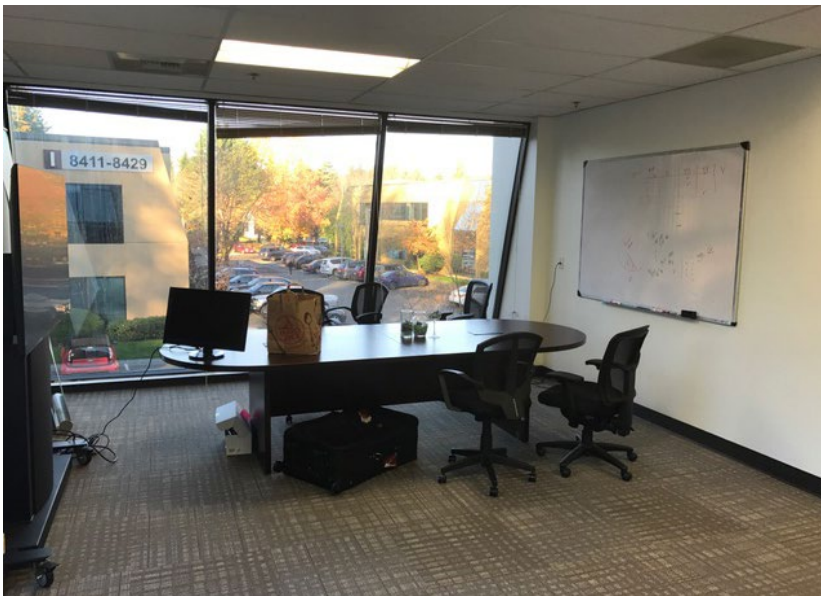
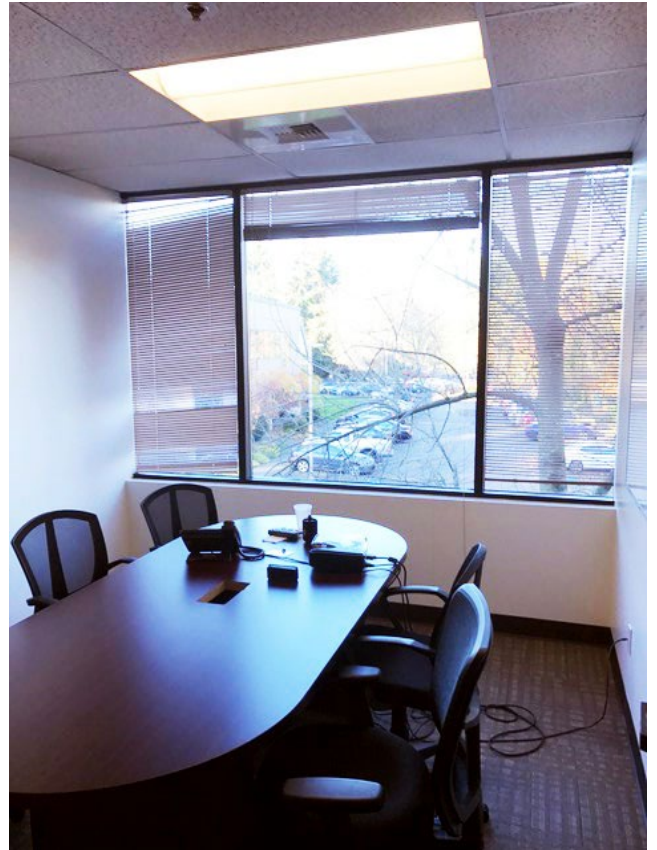


**CUSHMAN &
WAKEFIELD**
Commerce

FOR SUBLEASE

West Park - Bldg F

8353 154th Ave NE, Redmond, Washington



Brian Toy
Director
425 201 1224
Brian.Toy@comre.com

Taylor Hudson
Associate
425 201 1205
taylor.hudson@comre.com

10500 NE 8th Street, Suite 1125
Bellevue, WA
Main +1 425 455 4500
Fax +1 425 453 5381
comre.com

Independently Owned and Operated / A Member of the Cushman & Wakefield Alliance

Cushman & Wakefield Copyright 2015. No warranty or representation, express or implied, is made to the accuracy or completeness of the information contained herein, and same is submitted subject to errors, omissions, change of price, rental or other conditions, withdrawal without notice, and to any special listing conditions imposed by the property owner(s). As applicable, we make no representation as to the condition of the property (or properties) in question.