



**CUSHMAN &
WAKEFIELD**
Commerce

FOR SUBLEASE

Summit Center

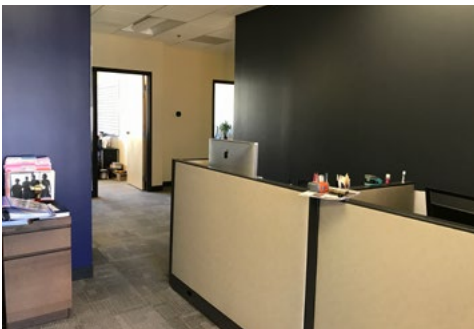
2750 Rasmussen Rd Suite H-201 (Building H)
Park City, UT

2,174 SF



Property Highlights

- Lease Rate: \$27.00/SF Full Service
- Sublease term through January 30th, 2019
- Building H Suite 201: 2,174 SF
- Nearby amenities at Kimball Junction less than 5 minutes away
- Great visibility & easy freeway access
- Covered parking



Mark Cannell

Associate

+1 801 303 5487

mcannell@comre.com

170 South Main Street, Suite 1600

Salt Lake City, UT 84101

Main +1 801 322 2000

Fax +1 801 322 2040

comre.com

Independently Owned and Operated / A Member of the Cushman & Wakefield Alliance

Cushman & Wakefield Copyright 2016. No warranty or representation, express or implied, is made to the accuracy or completeness of the information contained herein, and same is submitted subject to errors, omissions, change of price, rental or other conditions, withdrawal without notice, and to any special listing conditions imposed by the property owner(s). As applicable, we make no representation as to the condition of the property (or properties) in question. (path: G:\1 - Projects\Cannell_M\1 - Flyers\2750RasmussenRd_SummitCenter)



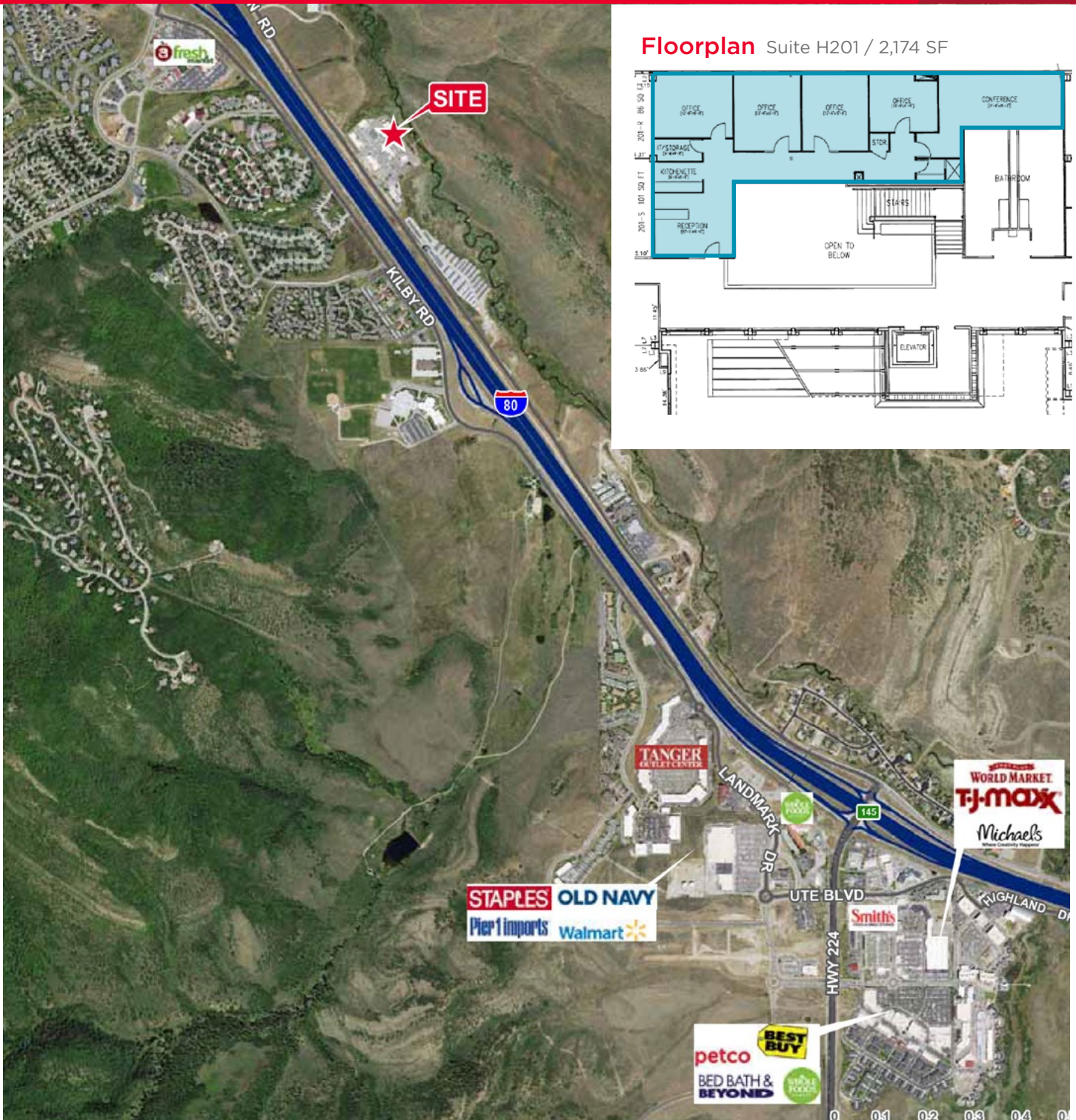
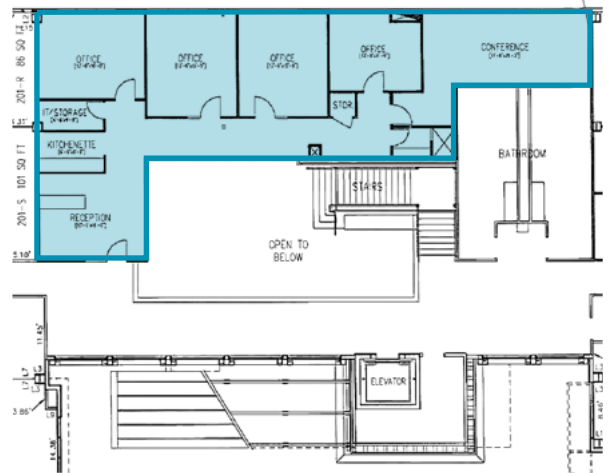
**CUSHMAN &
WAKEFIELD**
Commerce

FOR SUBLEASE

Summit Center

2750 Rasmussen Rd Suite H-201 (Building H)
Park City, UT

Floorplan Suite H201 / 2,174 SF



Mark Cannell

Associate

+1 801 303 5487

mcannell@comre.com

170 South Main Street, Suite 1600

Salt Lake City, UT 84101

Main +1 801 322 2000

Fax +1 801 322 2040

comre.com

Independently Owned and Operated / A Member of the Cushman & Wakefield Alliance

Cushman & Wakefield Copyright 2016. No warranty or representation, express or implied, is made to the accuracy or completeness of the information contained herein, and same is submitted subject to errors, omissions, change of price, rental or other conditions, withdrawal without notice, and to any special listing conditions imposed by the property owner(s). As applicable, we make no representation as to the condition of the property (or properties) in question. (path: G:\1 - Projects\Cannell_M\1 - Flyers\2750RasmussenRd_SummitCenter)