

**Sublease Rate: \$19.00 Full Service**

**Property Highlights**

- Conveniently located at the intersection of Highway 201 and I-215 west
- 1st floor - 5354 RSF, 2nd floor - 5737 RSF
- Ample Parking
- Plug-n-play Opportunity with furniture
- Great build-out that provides a nice mix of open-space, offices, multiple conference rooms, breakroom



**Anne Smart, sior**  
Director  
+1 801 303 5553  
asmart@comre.com

**Travis Yates**  
Associate  
+1 801 303 5414  
tyates@comre.com

**Chris Kirk, sior**  
Executive Director  
+1 801 303 5495  
ckirk@comre.com

170 South Main Street Suite 1600  
Salt Lake City, UT 84101  
Main +1 801 322 2000  
Fax +1 801 322 2040  
**comre.com**

**Anne Smart, sior**  
Director  
+1 801 303 5553  
asmart@comre.com

**Travis Yates**  
Associate  
+1 801 303 5414  
tyates@comre.com

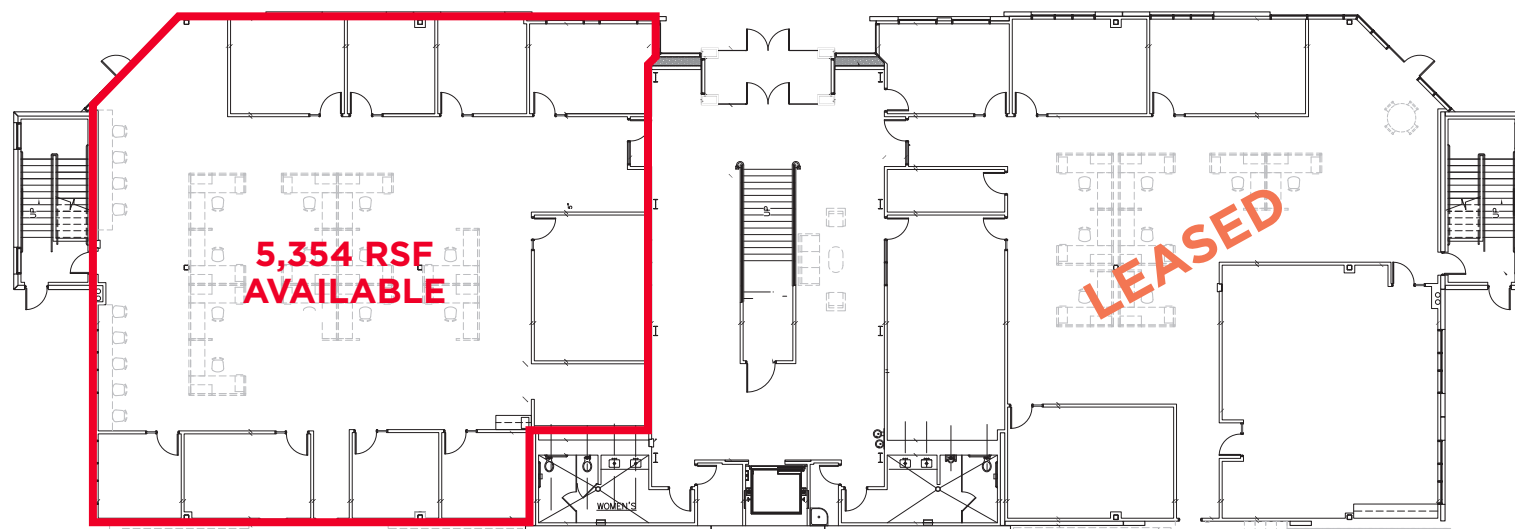
**Chris Kirk, sior**  
Executive Director  
+1 801 303 5495  
ckirk@comre.com

170 South Main Street Suite 1600  
Salt Lake City, UT 84101  
Main +1 801 322 2000  
Fax +1 801 322 2040  
**comre.com**





**1<sup>ST</sup> FLOOR**



**2<sup>ND</sup> FLOOR**

