



**CUSHMAN &  
WAKEFIELD**  
Commerce

FOR SALE OR BUILD-TO-SUIT

## Sorenson Research Park

4156 South Riverboat Road / Salt Lake City, Utah



### Development Lot Available

#### Property Features

- Approximately 5 acres available for purchase or build-to-suit

#### Building Features

- Dramatic Wasatch Mountain views
- Excellent access to I-15 & I-215
- Existing park tenants include, GE, Best Buy, Wells Fargo, ITT, Convergys and Kleinfelder

**Chris Kirk, SIOR**  
Executive Director - Office Properties  
+1 801 303 5495  
ckirk@comre.com

**Travis Yates**  
Associate - Office Properties  
+1 801 303 5414  
tyates@comre.com

170 South Main Street  
Suite 1600  
Salt Lake City, UT 84101  
Main +1 801 322 2000  
Fax +1 801 322 2040  
**comre.com**

*Independently Owned and Operated / A Member of the Cushman & Wakefield Alliance*

Cushman & Wakefield Copyright 2015. No warranty or representation, express or implied, is made to the accuracy or completeness of the information contained herein, and same is submitted subject to errors, omissions, change of price, rental or other conditions, withdrawal without notice, and to any special listing conditions imposed by the property owner(s). As applicable, we make no representation as to the condition of the property (or properties) in question.  
(path: G:\1 - Projects\Kirk, C\1 - Flyers\Arden\SorensonResearchPk\_Flyers\SRP\_4156sRiverboatRd)



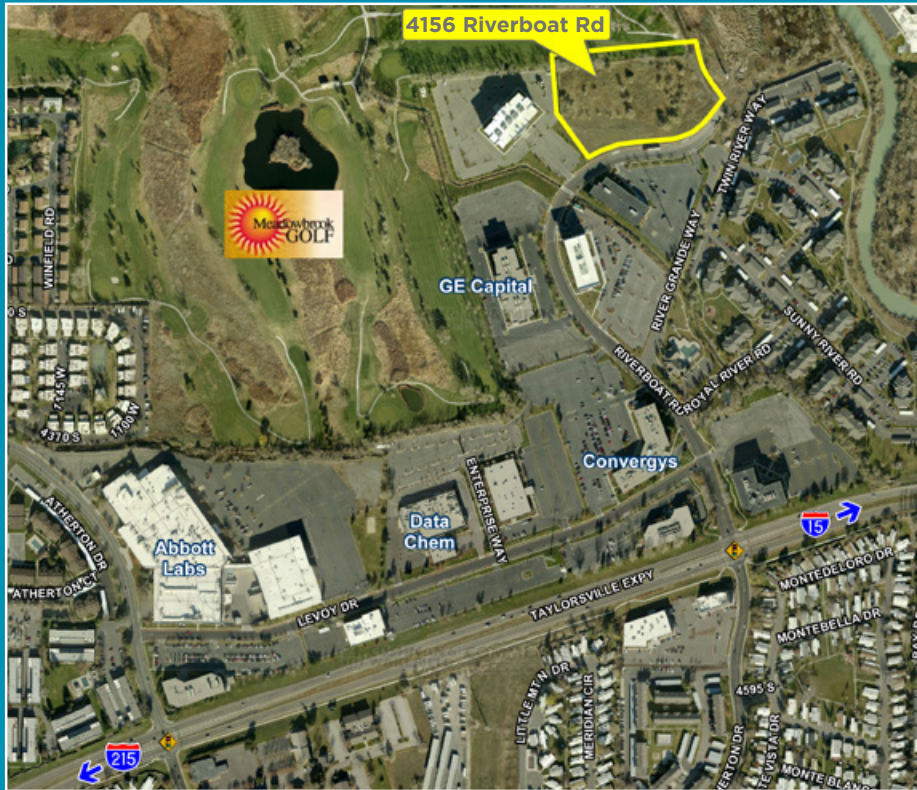


**CUSHMAN &  
WAKEFIELD**  
Commerce

FOR SALE OR BUILD-TO-SUIT

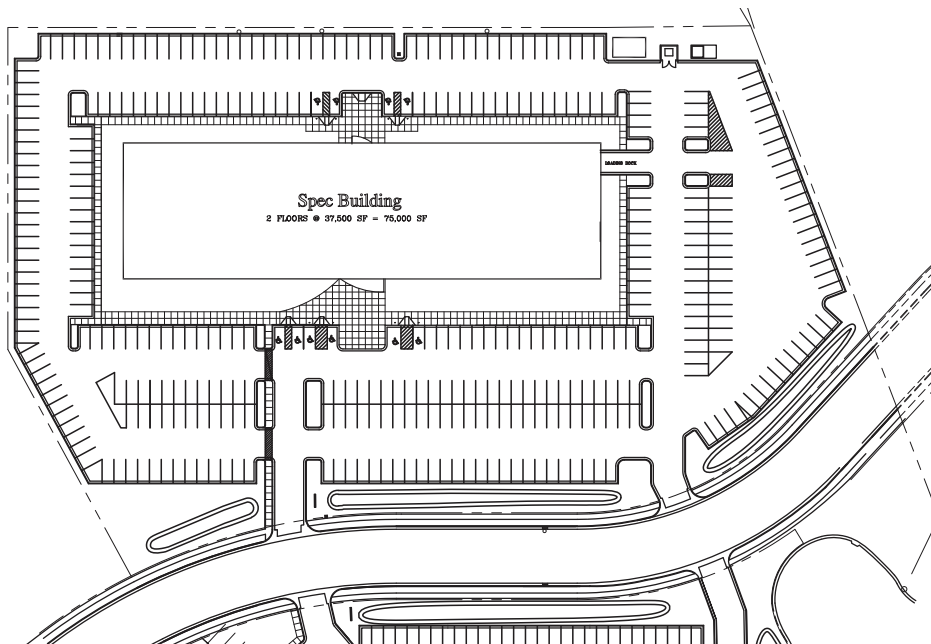
## Sorenson Research Park

4156 South Riverboat Road / Salt Lake City, Utah



Located in the heart of the Salt Lake Valley at 4500 South 815 West, Sorenson Research Park offers immediate access to both I-15 and I-215. This dynamic development, minutes from virtually anywhere in the Salt Lake Valley, is situated on over 100 acres and is close to several retail amenities, hotels and two golf courses.

### Site Plan



**Chris Kirk, SIOR**  
Executive Director - Office Properties  
+1 801 303 5495  
ckirk@comre.com

**Travis Yates**  
Associate - Office Properties  
+1 801 303 5414  
tyates@comre.com

170 South Main Street  
Suite 1600  
Salt Lake City, UT 84101  
Main +1 801 322 2000  
Fax +1 801 322 2040  
**comre.com**

*Independently Owned and Operated / A Member of the Cushman & Wakefield Alliance*

Cushman & Wakefield Copyright 2015. No warranty or representation, express or implied, is made to the accuracy or completeness of the information contained herein, and same is submitted subject to errors, omissions, change of price, rental or other conditions, withdrawal without notice, and to any special listing conditions imposed by the property owner(s). As applicable, we make no representation as to the condition of the property (or properties) in question.  
(path: G:\1 - Projects\Kirk, C\1 - Flyers\Arden\SorensonResearchPk\_Flyers\SRP\_4156sRiverboatRd)