

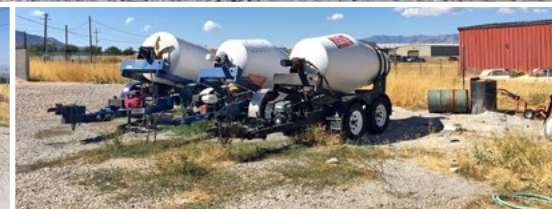
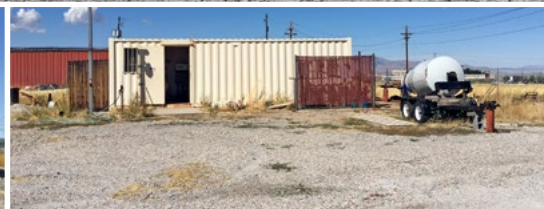
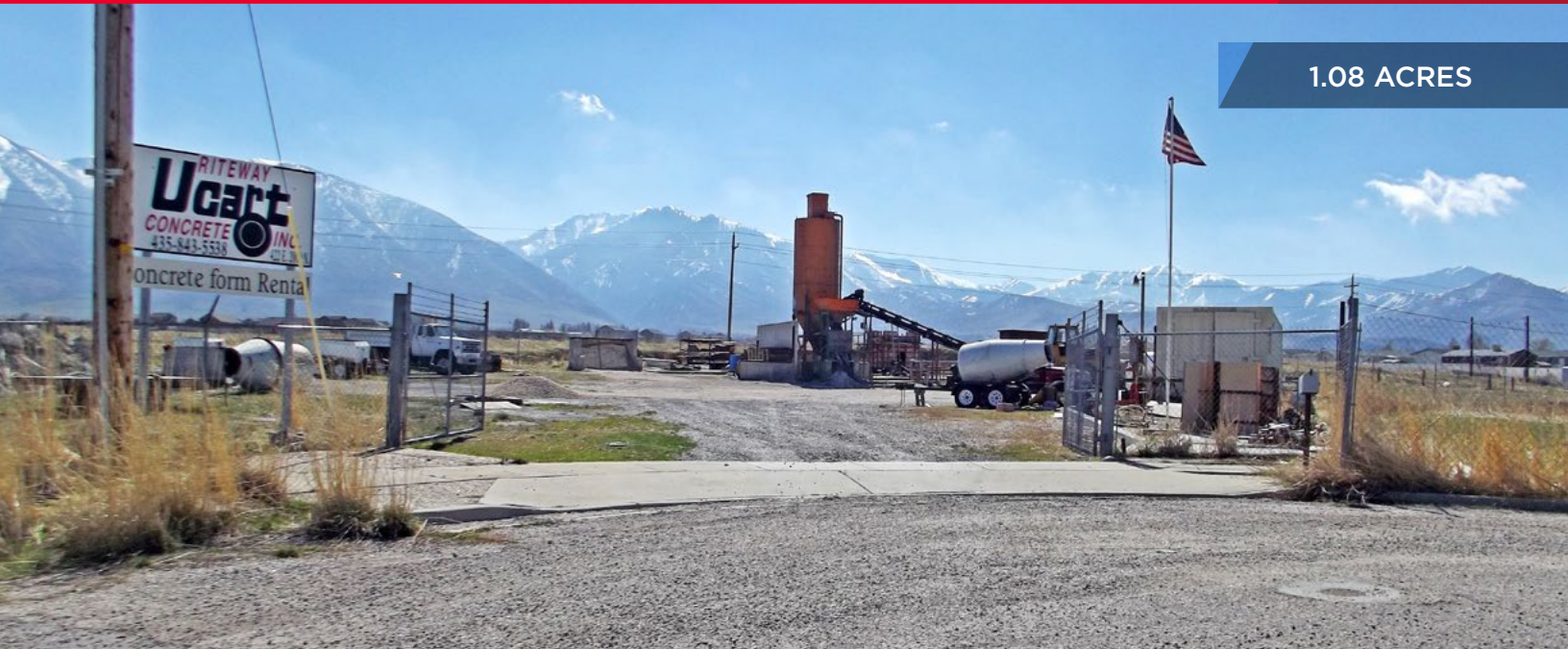


**CUSHMAN &  
WAKEFIELD**  
Commerce

FOR SALE

**422 East 2000 North**  
Tooele, Utah

**1.08 ACRES**



## Property Highlights

- 1.08 acres
- \$165,000 purchase price (\$3.50 PSF)
- Parcel #02-123-0-0002
- Zoned Light Industrial
- Fully fenced
- Two possible access points via Main Street and 2400 North
- All on-site equipment available for purchase at additional cost

## Demographics

	1 Mile	3 Mile	5 Mile
<b>Population</b>			
2010 Estimated Population	3,615	24,495	41,039
2016 Estimated Population	4,020	26,268	44,489
2021 Projected Population	4,397	27,732	47,319
<b>Households</b>			
2016 Estimated Households	1,094	8,063	13,462
2021 Projected Households	1,192	8,472	14,240
<b>Income</b>			
2016 Est. Median HH Income	\$80,932	\$60,279	\$64,035
2021 Est. Median HH Income	\$85,000	\$68,559	\$74,965
2016 Est. Average HH Income	\$88,836	\$70,738	\$78,100

*Source: U.S. Census Bureau, Census 2010 Data. Esri forecasts for 2016 and 2021.*

**Gina Moore**  
Director  
+1 801 303 5510  
gmoore@comre.com

**Tom Freeman, SIOR**  
Executive Director  
+1 801 303 5449  
tfreeman@comre.com

**Travis Healey, SIOR**  
Senior Director  
+1 801 303 5565  
thealey@comre.com

170 South Main Street, Suite 1600  
Salt Lake City, UT 84101  
Main +1 801 322 2000  
Fax +1 801 322 2040  
**comre.com**

*Independently Owned and Operated / A Member of the Cushman & Wakefield Alliance*

Cushman & Wakefield Copyright 2016. No warranty or representation, express or implied, is made to the accuracy or completeness of the information contained herein, and same is submitted subject to errors, omissions, change of price, rental or other conditions, withdrawal without notice, and to any special listing conditions imposed by the property owner(s). As applicable, we make no representation as to the condition of the property (or properties) in question. (path: G:\1 - Projects\Moore, G\1 - Flyers\Tooele\_422e2000n)





**CUSHMAN &  
WAKEFIELD**  
Commerce

FOR SALE

**422 East 2000 North**  
Tooele, Utah



**Gina Moore**  
Director  
+1 801 303 5510  
gmoore@comre.com

**Tom Freeman, SIOR**  
Executive Director  
+1 801 303 5449  
tfreeman@comre.com

**Travis Healey, SIOR**  
Senior Director  
+1 801 303 5565  
thealey@comre.com

170 South Main Street, Suite 1600  
Salt Lake City, UT 84101  
Main +1 801 322 2000  
Fax +1 801 322 2040  
**comre.com**

*Independently Owned and Operated / A Member of the Cushman & Wakefield Alliance*

Cushman & Wakefield Copyright 2016. No warranty or representation, express or implied, is made to the accuracy or completeness of the information contained herein, and same is submitted subject to errors, omissions, change of price, rental or other conditions, withdrawal without notice, and to any special listing conditions imposed by the property owner(s). As applicable, we make no representation as to the condition of the property (or properties) in question. (path: G:\1 - Projects\Moore, G\1 - Flyers\Tooele\_422e2000n)