



Property Highlights

Sale Price	\$3,280,000
Cap Rate	5.9% at Current Occupancy
Upside Potential	Great Upside to Investor with Lease-Up of Last Vacant Suite
Current Occupancy	73.8%
Two Buildings	13,491 SF Total
Lot Size	1.49 Acres Total
Parcel #'s	R0945580300 & R0945580290
Parking	4:1,000
Current Tenants	Jimmy John's, Envy Nails, Complete Nutrition, iQue Repair & JoS. A. Bank

[Please Click Here to Download, Execute and Return Confidentiality Agreement to Receive Offering Memorandum](#)

Listing Features

- Multi-Tenant Retail Strip Center For Sale
- Located at the Southwest Quadrant of Eagle & Ustick Roads in Meridian
- Ingress/ Egress from Eagle Road and Ustick Road
- Prime Location with Excellent Visibility
- High Visibility Buildings and Signage
- Surrounded by National Retailers Including Lowe's, Hobby Lobby, Kohl's, Dick's Sporting Goods, Rosauers, Norco and more...
- *Please Do Not Disturb Current Tenants, Contact Agent to Schedule a Walkthrough Today!!*

Rhonda Garland, CCIM
Director
Investment Specialist
+1 208 287 8905
rhonda.garland@comre.com

398 South 9th Street, Ste 260
Boise, Idaho 83702
Main +1 208 287 9500
Fax +1 208 287 9501
comre.com

Independently Owned and Operated / A Member of the Cushman & Wakefield Alliance

Cushman & Wakefield Copyright 2015. No warranty or representation, express or implied, is made to the accuracy or completeness of the information contained herein, and same is submitted subject to errors, omissions, change of price, rental or other conditions, withdrawal without notice, and to any special listing conditions imposed by the property owner(s). As applicable, we make no representation as to the condition of the property (or properties) in question.



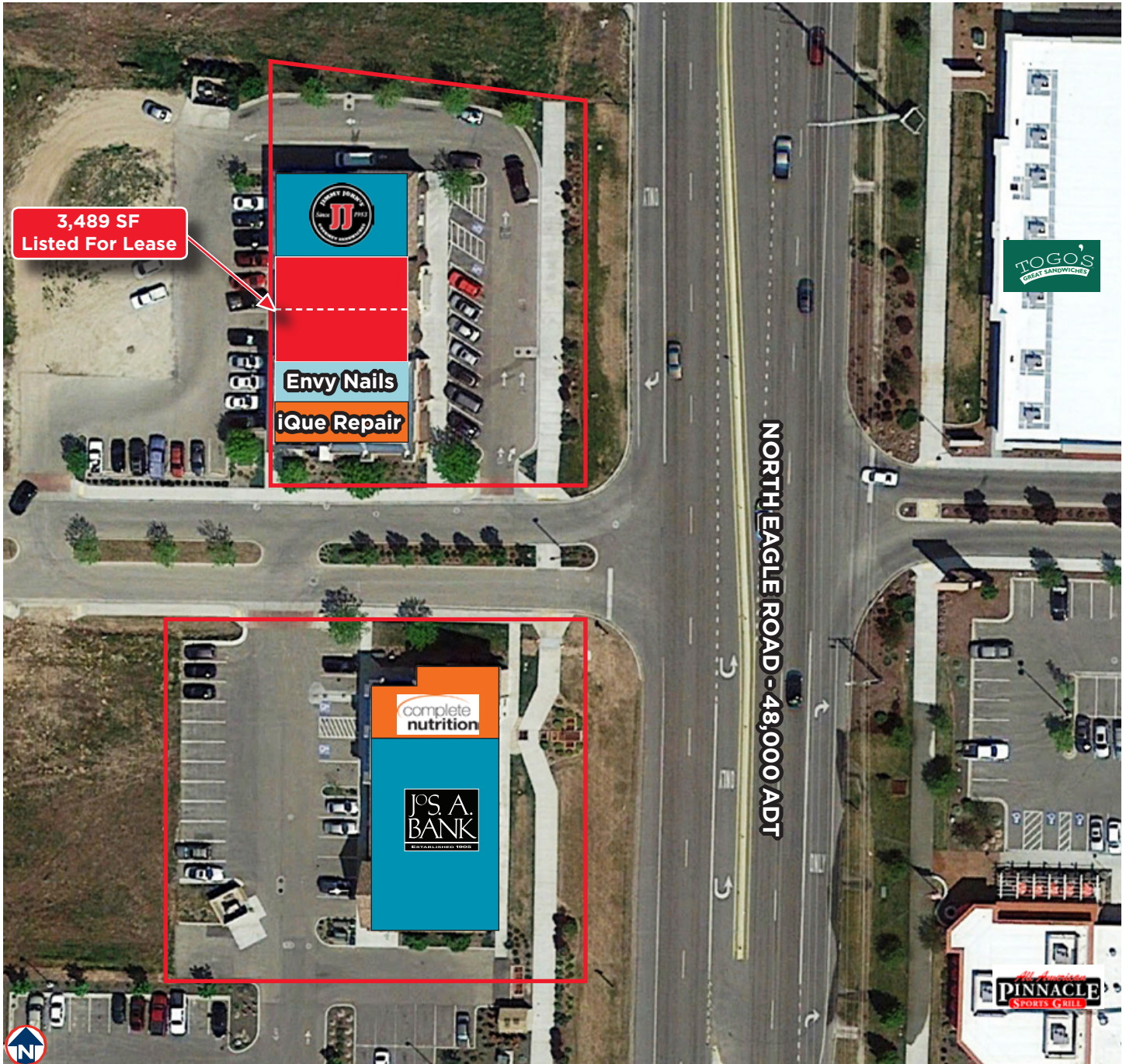
**CUSHMAN &
WAKEFIELD**
Commerce

FOR SALE

Mason Creek Retail Center

2847 - 2959 North Eagle Road, Meridian, Idaho

2 Buildings, 13,491 Square Foot Multi-Tenant Retail Strip Center



Rhonda Garland, CCIM
Director
Investment Specialist
+1 208 287 8905
rhonda.garland@comre.com

398 South 9th Street, Ste 260
Boise, Idaho 83702
Main +1 208 287 9500
Fax +1 208 287 9501
comre.com

Independently Owned and Operated / A Member of the Cushman & Wakefield Alliance

Cushman & Wakefield Copyright 2015. No warranty or representation, express or implied, is made to the accuracy or completeness of the information contained herein, and same is submitted subject to errors, omissions, change of price, rental or other conditions, withdrawal without notice, and to any special listing conditions imposed by the property owner(s). As applicable, we make no representation as to the condition of the property (or properties) in question.

2 Buildings, 13,491 Square Foot Multi-Tenant Retail Strip Center



Independently Owned and Operated / A Member of the Cushman & Wakefield Alliance

Cushman & Wakefield Copyright 2015. No warranty or representation, express or implied, is made to the accuracy or completeness of the information contained herein, and same is submitted subject to errors, omissions, change of price, rental or other conditions, withdrawal without notice, and to any special listing conditions imposed by the property owner(s). As applicable, we make no representation as to the condition of the property (or properties) in question.

Mason Creek Retail Center

2847 - 2959 North Eagle Road, Meridian, Idaho



Independently Owned and Operated / A Member of the Cushman & Wakefield Alliance

Cushman & Wakefield Copyright 2015. No warranty or representation, express or implied, is made to the accuracy or completeness of the information contained herein, and same is submitted subject to errors, omissions, change of price, rental or other conditions, withdrawal without notice, and to any special listing conditions imposed by the property owner(s). As applicable, we make no representation as to the condition of the property (or properties) in question.