

108 NORTH LATAH STREET
BOISE, IDAHO 83706



COMMERCE
REAL ESTATE SOLUTIONS • COMRE.COM
INDEPENDENTLY OWNED AND OPERATED

LATAH PLAZA OFFICE / RETAIL SPACE FOR LEASE
1,061 SQUARE FEET AVAILABLE

CENTRAL LOCATION NEAR DOWNTOWN



BUILDING FEATURES

LEASE RATE	\$10.00 / SF Modified Gross Tenant pays electrical, gas and janitorial separately
AVAILABLE	1,061 SF (Corner Unit)
SPACE STATUS	Fully Built-Out, Move In Ready
ZONING	City-of-Boise C-ID
LOT SIZE	0.336 Acres
PARKING	Ample - On-Site
SIGNAGE	Monument Panel Space Provided, Potential for Window Lettering Signage
YEAR BUILT	1955 Recently Remodeled
TOTAL BUILDING	7,350 SF
AVAILABILITY	Immediate
LOCKBOX	No, Contact Agent to Schedule Tours

PROPERTY FEATURES

- Great Central Location in a Densely Populated Area on the Boise Bench, Close to Americana and Emerald Just Outside Downtown Boise
- Space is in Great Condition & Ready for Immediate Occupancy
- Great Location and Space for Law Office, Insurance Sales, Tax Preparation Office, Flower Shop, Appliance Repair and other Service and Retail Users
- Ample On-Site Parking Included for Clients and Staff
- Highly Visible Monument Panel Signage Space Included
- Quick Access and Easy Access into Downtown Boise Via Latah / Americana as well as Rose Hill to Capitol Boulevard
- Immediate Availability, Contact Agent to Schedule a Walk Through Today!

For more information, please contact:

SHELLEY WALLACE
Office Specialist
(208) 287 8437
shelley.wallace@comre.com

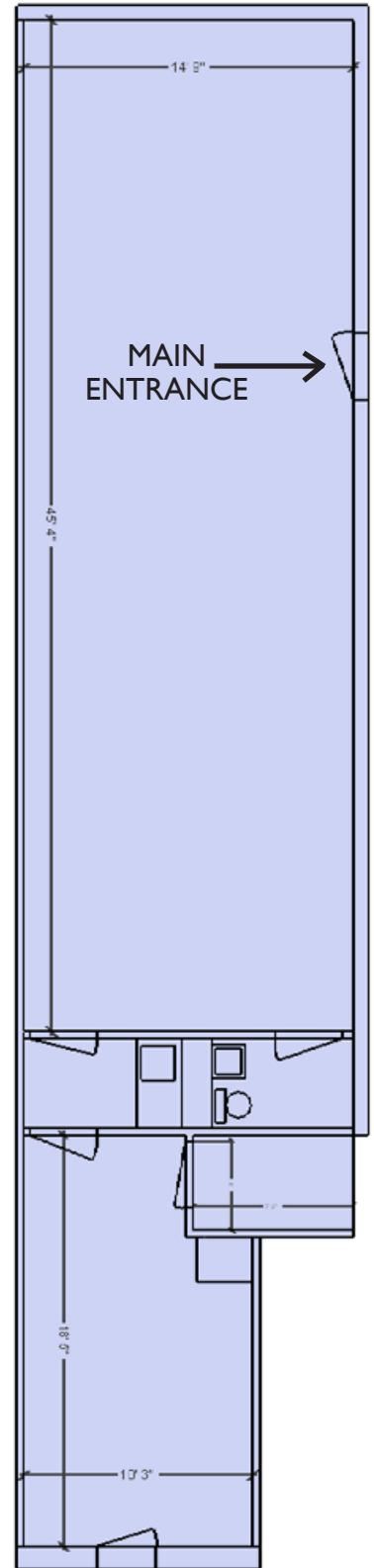
CUSHMAN & WAKEFIELD | COMMERCE
398 South 9th Street, Suite 260
Boise, Idaho 83702
(208) 287 9500
www.comre.com

©2014, Commerce Real Estate Solutions. Disclaimer: The above information is given with the obligation that all negotiations relating to the purchase, renting, or leasing of the property described above shall be conducted through Commerce Real Estate Solutions. No warranty or representation, express or implied, is made as to the accuracy of the information contained herein, and same is submitted subject to errors, omissions, change of price, rental or other encumbrances, withdrawal without notice, and to any special listing conditions imposed by the seller. Prospective buyers should conduct their own due diligence. Some aerial photography by DigitalGlobe or Aerials Express.

108 NORTH LATAH STREET

BOISE, IDAHO 83706

FOR LEASE
MOVE IN READY
RETAIL / OFFICE SPACE



For more information, please contact:

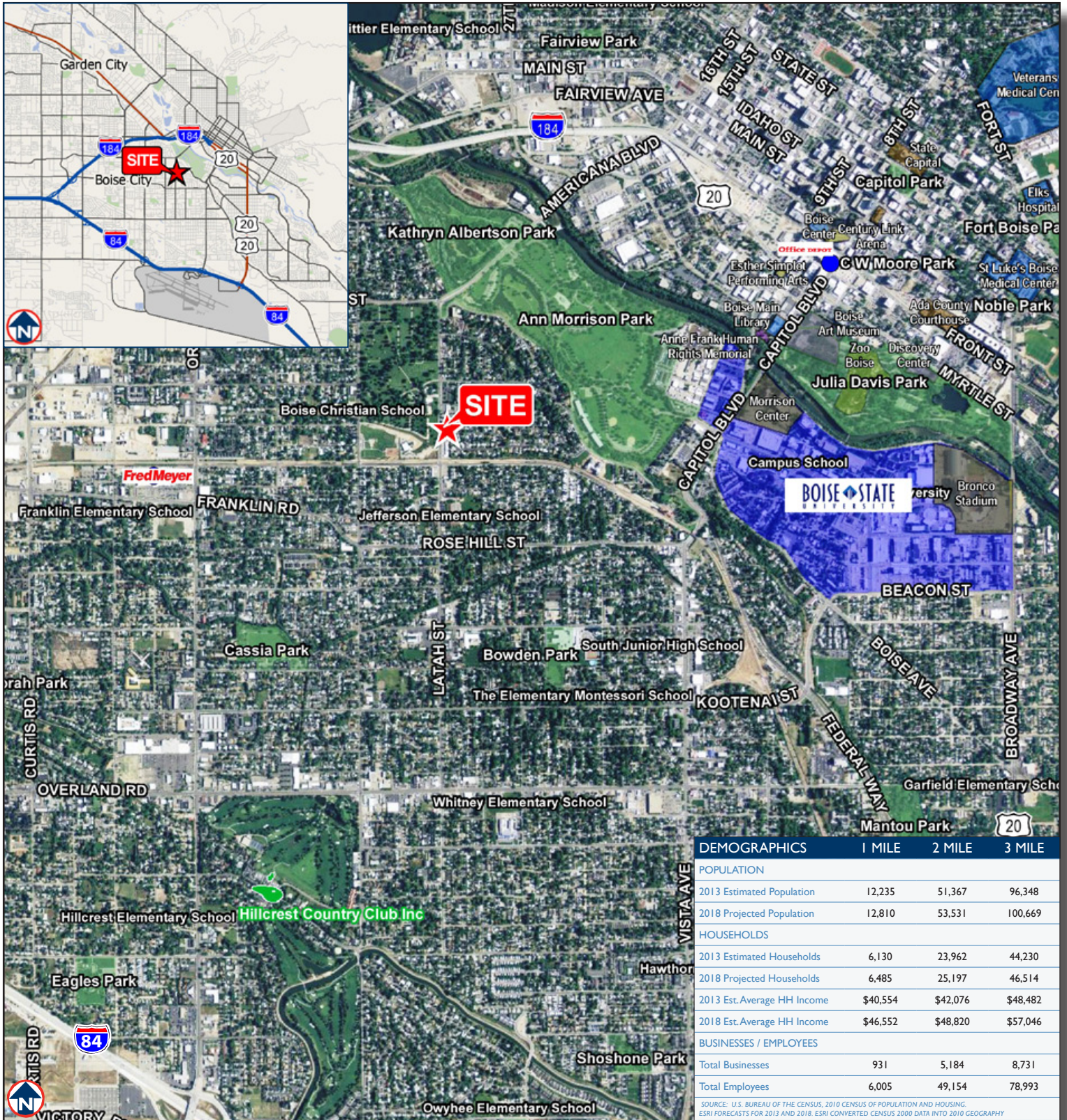
SHELLEY WALLACE
Office Specialist
(208) 287 8437
shelley.wallace@comre.com

CUSHMAN & WAKEFIELD | COMMERCE
398 South 9th Street, Suite 260
Boise, Idaho 83702
(208) 287 9500
www.comre.com

108 NORTH LATAH STREET

BOISE, IDAHO 83706

FOR LEASE
MOVE IN READY
RETAIL / OFFICE SPACE



For more information, please contact:

SHELLEY WALLACE
Office Specialist
(208) 287 8437
shelley.wallace@comre.com

CUSHMAN & WAKEFIELD | COMMERCE
398 South 9th Street, Suite 260
Boise, Idaho 83702
(208) 287 9500
www.comre.com

©2014, Commerce Real Estate Solutions. Disclaimer: The above information is given with the obligation that all negotiations relating to the purchase, renting, or leasing of the property described above shall be conducted through Commerce Real Estate Solutions. No warranty or representation, express or implied, is made as to the accuracy of the information contained herein, and same is submitted subject to errors, omissions, change of price, rental or other encumbrances, withdrawal without notice, and to any special listing conditions imposed by the seller. Prospective buyers should conduct their own due diligence. Some aerial photography by DigitalGlobe or Aerials Express.