



**CUSHMAN &  
WAKEFIELD**  
Commerce

6.3 ACRES FOR SALE

## 3510 West Directors Row

West Valley City, Utah

INDUSTRIAL LAND FOR SALE



### Property Highlights

- Price: \$1,500,000 / \$5.50 Per SF
- Zoned: M-1
- Great rectangular shape
- Great access to all freeways

**Travis Healey**  
Senior Director  
+1 801 303 5565  
thealey@comre.com

**Tom Freeman**  
Executive Director  
+1 801 303 5449  
tfreeman@comre.com

**Gina Moore**  
Director  
+1 801 303 5510  
gmoore@comre.com

170 South Main Street Suite 1600  
Salt Lake City, UT 84101  
Main +1 801 322 2000  
Fax +1 801 322 2040  
**comre.com**

*Independently Owned and Operated / A Member of the Cushman & Wakefield Alliance*

Cushman & Wakefield Copyright 2016. No warranty or representation, express or implied, is made to the accuracy or completeness of the information contained herein, and same is submitted subject to errors, omissions, change of price, rental or other conditions, withdrawal without notice, and to any special listing conditions imposed by the property owner(s). As applicable, we make no representation as to the condition of the property (or properties) in question.  
(path: G:\1 - Projects\Healey, T\1 - Flyers\3510WestDirectorsRow)



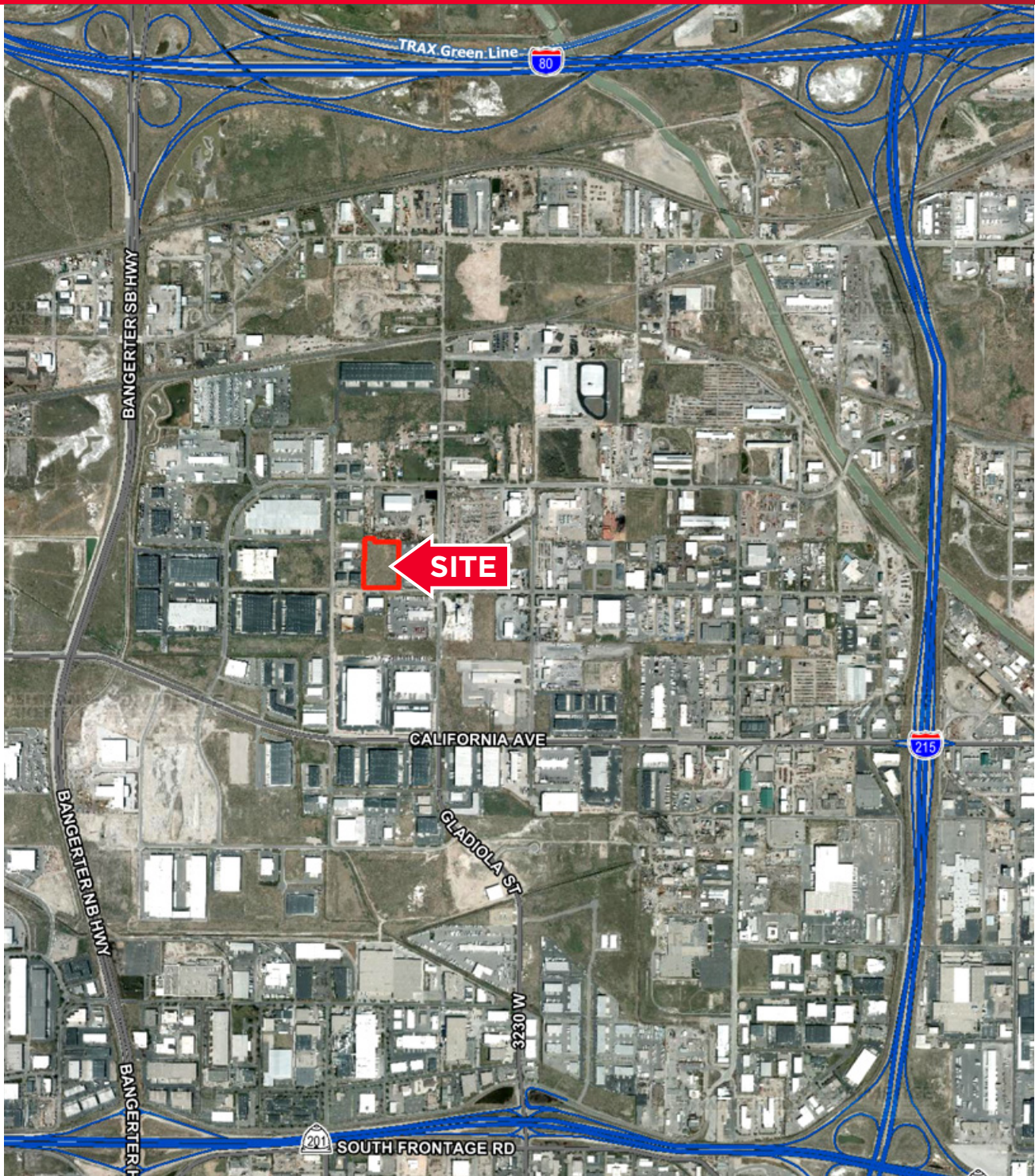


**CUSHMAN &  
WAKEFIELD**  
Commerce

6.3 ACRES FOR SALE

## 3510 West Directors Row

West Valley City, Utah



**Travis Healey**  
Senior Director  
+1 801 303 5565  
thealey@comre.com

**Tom Freeman**  
Executive Director  
+1 801 303 5449  
tfreeman@comre.com

**Gina Moore**  
Director  
+1 801 303 5510  
gmoore@comre.com

170 South Main Street Suite 1600  
Salt Lake City, UT 84101  
Main +1 801 322 2000  
Fax +1 801 322 2040  
**comre.com**

*Independently Owned and Operated / A Member of the Cushman & Wakefield Alliance*

Cushman & Wakefield Copyright 2016. No warranty or representation, express or implied, is made to the accuracy or completeness of the information contained herein, and same is submitted subject to errors, omissions, change of price, rental or other conditions, withdrawal without notice, and to any special listing conditions imposed by the property owner(s). As applicable, we make no representation as to the condition of the property (or properties) in question.  
(path: G:\1 - Projects\Healey, T\1 - Flyers\3510WestDirectorsRow)