



**CUSHMAN &
WAKEFIELD**
Commerce

FOR SUBLEASE

Twelfth Place Bus. Park - Bldg C

1301 120th Ave NE / Bellevue, WA 98005

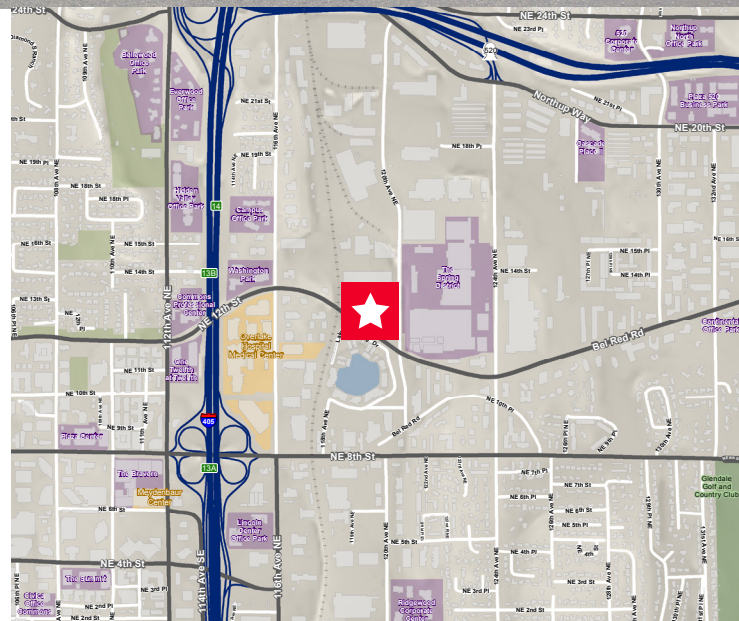
FOR SUBLEASE



2,067 RSF Office Space Sublease

Property Highlights

- Available 1/1/2017
- Sublease through 12/31/2017
- \$20.00/RSF Gross
- Furniture available
- Free parking
- Parking ratio: 3.20/1,000 RSF
- Aggressive below market rental rate
- Direct access to I-405 and SR 520



Trevor Youngren
Director
+1 206 521 0241
trevor.youngren@comre.com

Andrew Toner
Associate
+1 206 521 0288
andrew.toner@comre.com

1420 5th Ave, Suite 2600
Seattle, WA 98101
Main +1 206 682 0666
Fax +1 206 521 0298
comre.com

Independently Owned and Operated / A Member of the Cushman & Wakefield Alliance

Cushman & Wakefield Copyright 2015. No warranty or representation, express or implied, is made to the accuracy or completeness of the information contained herein, and same is submitted subject to errors, omissions, change of price, rental or other conditions, withdrawal without notice, and to any special listing conditions imposed by the property owner(s). As applicable, we make no representation as to the condition of the property (or properties) in question.

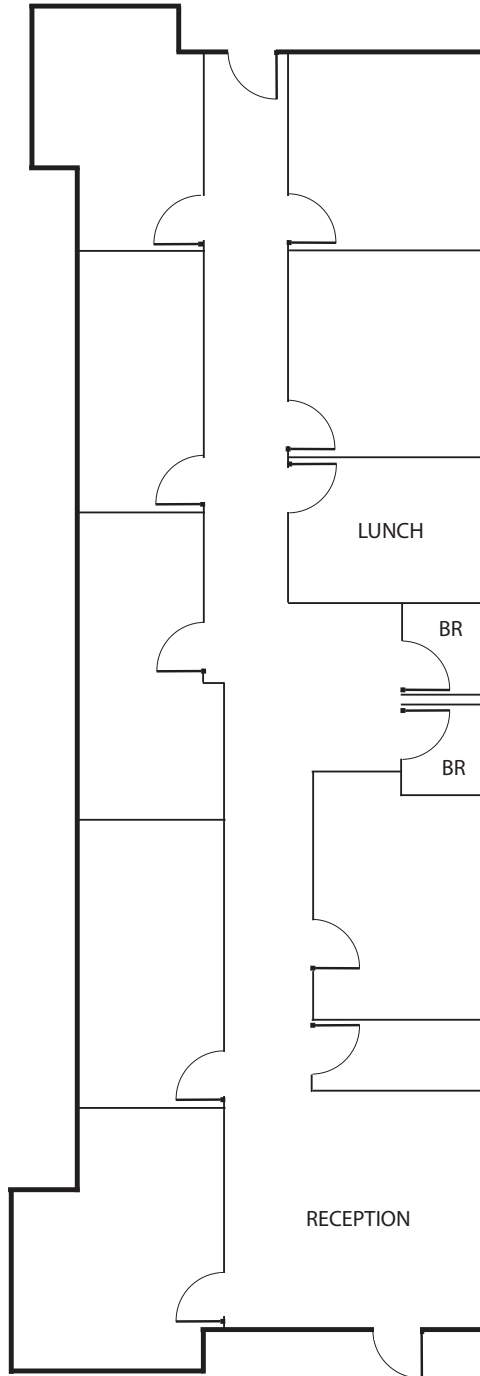


**CUSHMAN &
WAKEFIELD**
Commerce

FOR SUBLEASE

Twelfth Place Bus. Park - Bldg C

1301 120th Ave NE / Bellevue, WA 98005



Trevor Youngren

Director

+1 206 521 0241

trevor.youngren@comre.com

Andrew Toner

Associate

+1 206 521 0288

andrew.toner@comre.com

1420 5th Ave, Suite 2600

Seattle, WA 98101

Main +1 206 682 0666

Fax +1 206 521 0298

comre.com

Independently Owned and Operated / A Member of the Cushman & Wakefield Alliance

Cushman & Wakefield Copyright 2015. No warranty or representation, express or implied, is made to the accuracy or completeness of the information contained herein, and same is submitted subject to errors, omissions, change of price, rental or other conditions, withdrawal without notice, and to any special listing conditions imposed by the property owner(s). As applicable, we make no representation as to the condition of the property (or properties) in question.