

Jeremy Terry
Industrial Specialist
+1 801 303 5561
jterry@comre.com

170 South Main Street Suite 1600
Salt Lake City, UT 84101
Main +1 801 322 2000
Fax +1 801 322 2040
comre.com

Independently Owned and Operated / A Member of the Cushman & Wakefield Alliance
Cushman & Wakefield Copyright 2016. No warranty or representation, express or implied, is made to the accuracy or completeness of the information contained herein, and same is submitted subject to errors, omissions, change of price, rental or other conditions, withdrawal without notice, and to any special listing conditions imposed by the property owner(s). As applicable, we make no representation as to the condition of the property (or properties) in question.
(path: G:\1 - Projects\Terry, J\1 - Flyers\445n700w_NSL)



Property Highlights

- **Lease Rate** **\$0.65 NNN**
- **Size:** 7,400 SF
 Office: 1,800 SF
 Warehouse: 5,600 SF
- **Height:** 28'
- **Lighting:** T5
- **Loading:** (1) 12' x 14' GL
 (2) 10' x 12' DH

Jeremy Terry
Industrial Specialist
+1 801 303 5561
jterry@comre.com

Independently Owned and Operated / A Member of the Cushman & Wakefield Alliance



170 South Main Street Suite 1600
Salt Lake City, UT 84101
Main +1 801 322 2000
Fax +1 801 322 2040
comre.com

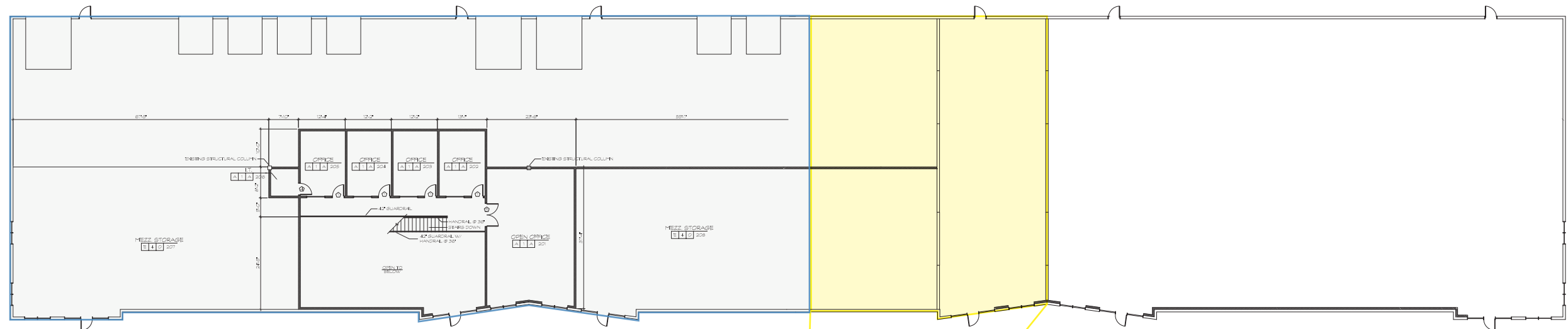
Former Handi Quilter Building

445 North 700 West / North Salt Lake, Utah 84054

FIRST FLOOR



SECOND FLOOR



Site Plan

