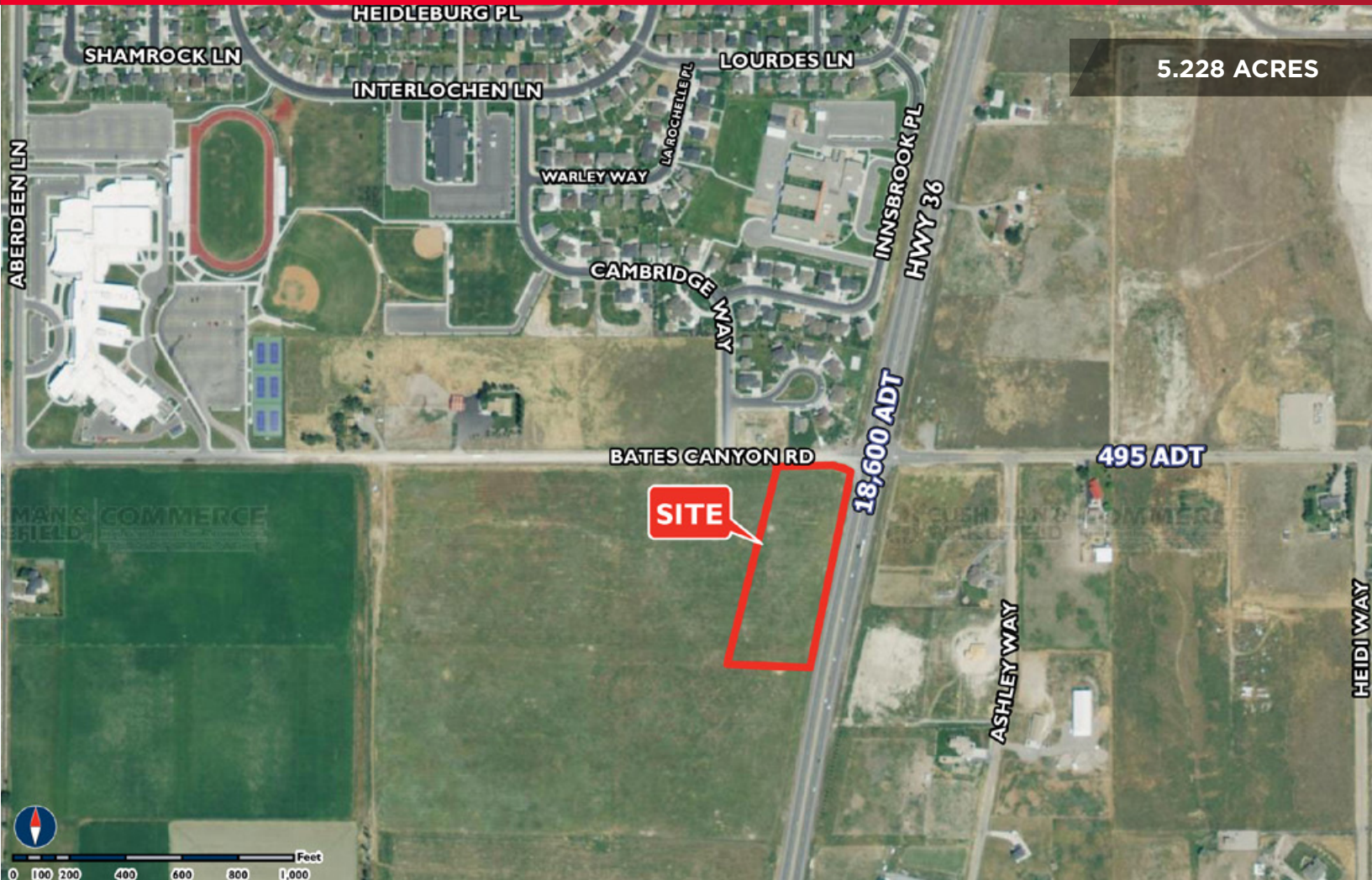


Ralph Riedel, ccim
Executive Director - Investment
+1 801 303 5466
riedel@comre.com

170 South Main Street Suite 1600
Salt Lake City, UT 84101
Main +1 801 322 2000
Fax +1 801 322 2040
comre.com

Independently Owned and Operated / A Member of the Cushman & Wakefield Alliance
Cushman & Wakefield Copyright 2016. No warranty or representation, express or implied, is made to the accuracy or completeness of the information contained herein, and same is submitted subject to errors, omissions, change of price, rental or other conditions, withdrawal without notice, and to any special listing conditions imposed by the property owner(s). As applicable, we make no representation as to the condition of the property (or properties) in question.
(path: G:\1 - Projects\Riedel_Ralph\1 - Flyers\BatesRd_SR36_Tooele)



Sale Price: \$1,000,000

Property Highlights

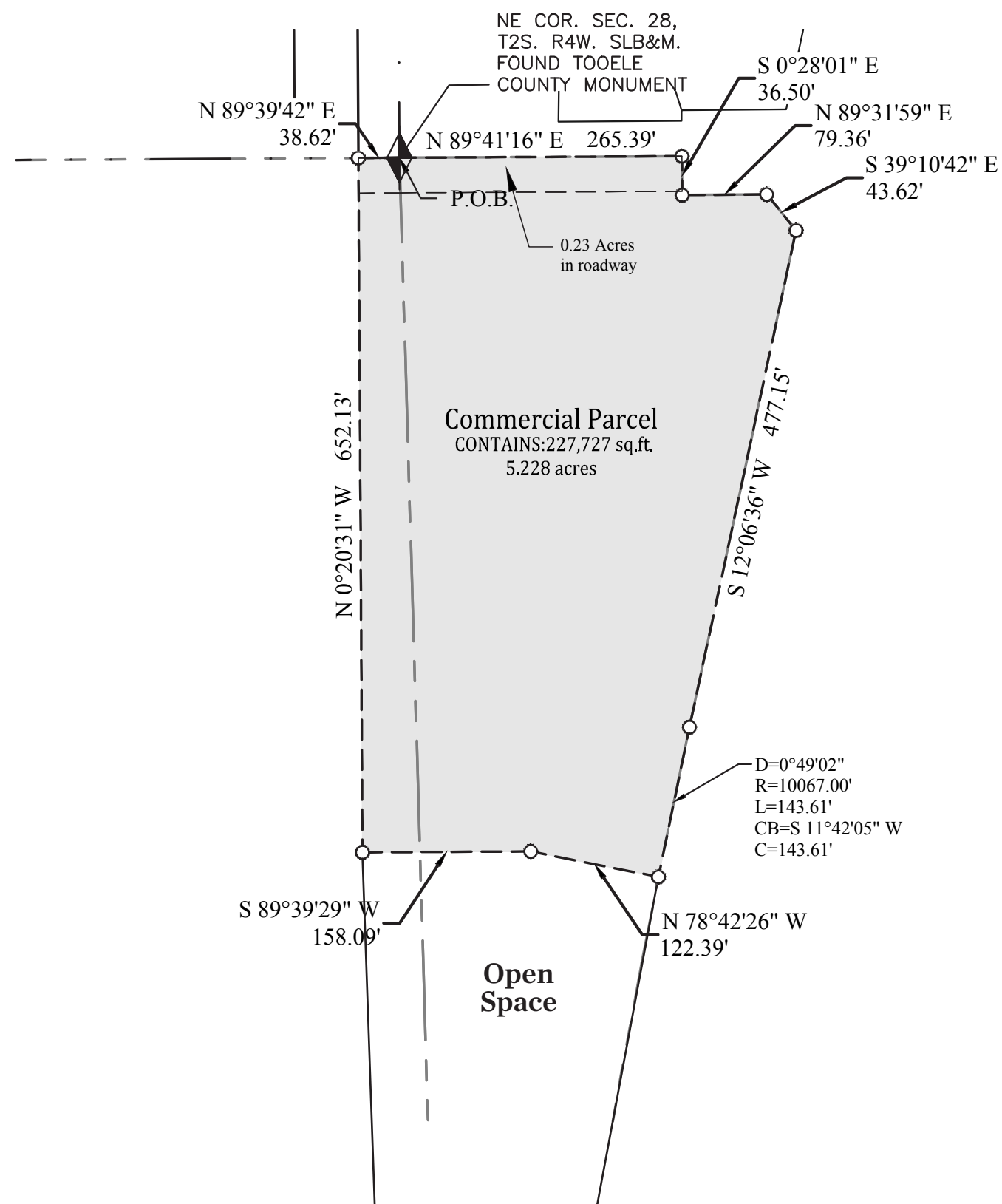
- Size: 5.228 Acres
- Zoned: Commercial - Retail
- Site Amenities: Water and sewer provided by Stansbury Park Improvment District
- Lighted intersection
- Best site in Tooele County
- Next to several major residential projects

Ralph Riedel, ccim
Executive Director - Investment
+1 801 303 5466
riedel@comre.com

170 South Main Street Suite 1600
Salt Lake City, UT 84101
Main +1 801 322 2000
Fax +1 801 322 2040
comre.com

Independently Owned and Operated / A Member of the Cushman & Wakefield Alliance

PARCEL MAP



DEVELOPMENT PLAN

