



**CUSHMAN &
WAKEFIELD**
Commerce

FOR SALE

Timberline Building

625 Hwy 50, Zephyr Cove, Nevada



TIMBERLINE BUILDING

Office building near Marla Bay in Zephyr Cove.

Property Highlights

- 3 Story - 5,264 sf Office
- Right on Highway 50
- 14+ Offices
- Suitable for multi-tenant
- Central air, plus wall heaters in offices
- On TART Bus Line



Randy Pease

Associate

+1 775 851 9500

randy.pease@comre.com

6121 Lakeside Drive, Suite 160

Reno, Nevada 89511

Main +1 775 851 9500

Fax +1 775 851 9511

comre.com

Independently Owned and Operated / A Member of the Cushman & Wakefield Alliance

Cushman & Wakefield Copyright 2016. No warranty or representation, express or implied, is made to the accuracy or completeness of the information contained herein, and same is submitted subject to errors, omissions, change of price, rental or other conditions, withdrawal without notice, and to any special listing conditions imposed by the property owner(s). As applicable, we make no representation as to the condition of the property (or properties) in question.
(path: G:\1 - Projects\Reno_Office\Pease_Randy\1 - Flyers\625Hwy50)

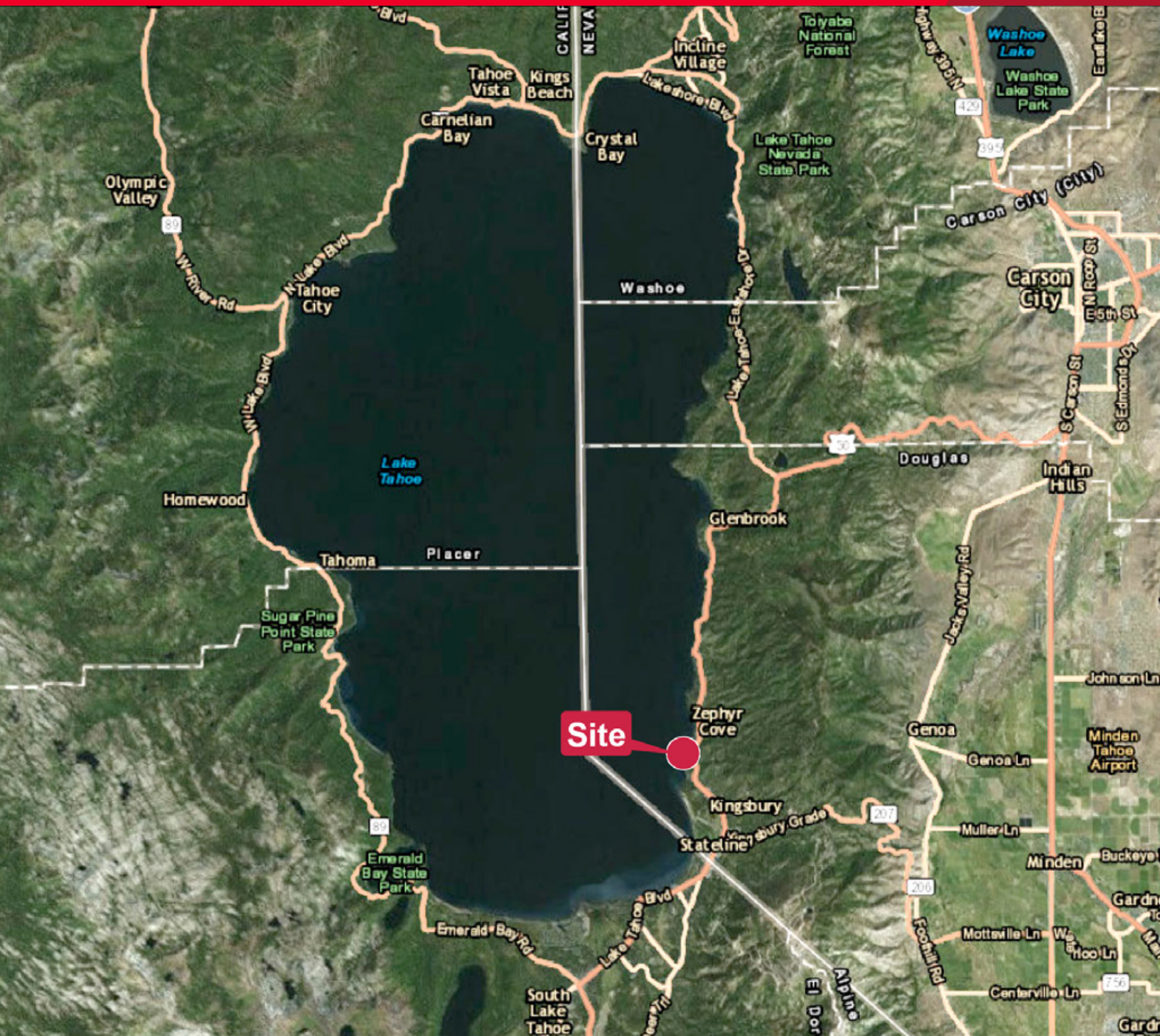


**CUSHMAN &
WAKEFIELD**
Commerce

FOR SALE

Timberline Building

625 Hwy 50, Zephyr Cove, Nevada



Randy Pease

Associate

+1 775 851 9500

randy.pease@comre.com

6121 Lakeside Drive, Suite 160

Reno, Nevada 89511

Main +1 775 851 9500

Fax +1 775 851 9511

comre.com

Independently Owned and Operated / A Member of the Cushman & Wakefield Alliance

Cushman & Wakefield Copyright 2016. No warranty or representation, express or implied, is made to the accuracy or completeness of the information contained herein, and same is submitted subject to errors, omissions, change of price, rental or other conditions, withdrawal without notice, and to any special listing conditions imposed by the property owner(s). As applicable, we make no representation as to the condition of the property (or properties) in question.

(path: G:\1 - Projects\Reno_Office\Pease_Randy\1 - Flyers\625Hwy50)