



**CUSHMAN &
WAKEFIELD**
Commerce

FOR LEASE

Riverpoint Corporate Center

18200-18300 Cascade Avenue South, Seattle, WA

**780 - 1,464 SF Available
Class A Office Space**



Property Features

- Local ownership group, aggressive deal makers
- Two (2) building Class "A" office campus
- On site amenity includes fitness center
- Minutes to Westfield Shopping Center
- Convenient access to I-5, I-405, and SR-167
- Abundant free parking, ratio 4.0/1,000 sf
- Seattle mailing address

Building Features

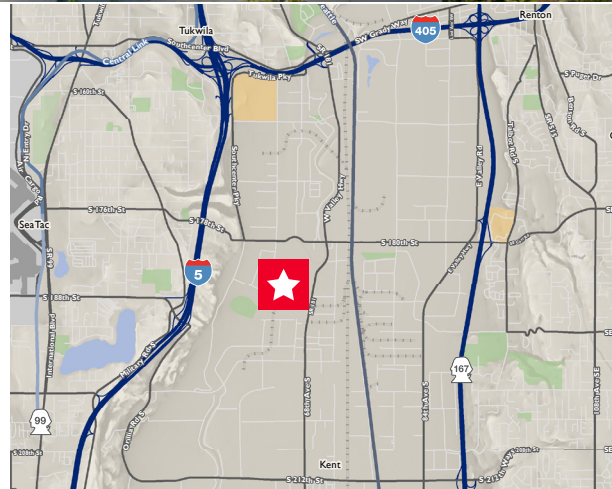
Total Square Footage:
103,425 sf

Total Available:
780 - 1,464 SF

Lease Rate:
\$17.00 NNN

Parking:
4.0/1,000 SF

Tenant Improvements:
Turn-key



Space Available

Suite	Area	Divisible	Profile	Rate PSF	Type
110	780 sf	No	Office	\$17.00	NNN
142	1,464	No	Office	\$17.00	NNN

Kevin Smith
Associate Director
+1 206 521 0287
kevin.smith@comre.com

Dave Magee
Managing Director
+1 206 521 0267
dave.magee@comre.com

Space Leased YTD 2016

Suite	Area
130	1,499 sf
140	2,671 sf
141	3,647 sf
160	1,053 sf
161	1,127 sf
265	6,353 sf

Independently Owned and Operated / A Member of the Cushman & Wakefield Alliance

Cushman & Wakefield Copyright 2015. No warranty or representation, express or implied, is made to the accuracy or completeness of the information contained herein, and same is submitted subject to errors, omissions, change of price, rental or other conditions, withdrawal without notice, and to any special listing conditions imposed by the property owner(s). As applicable, we make no representation as to the condition of the property (or properties) in question.



**CUSHMAN &
WAKEFIELD**
Commerce

FOR LEASE

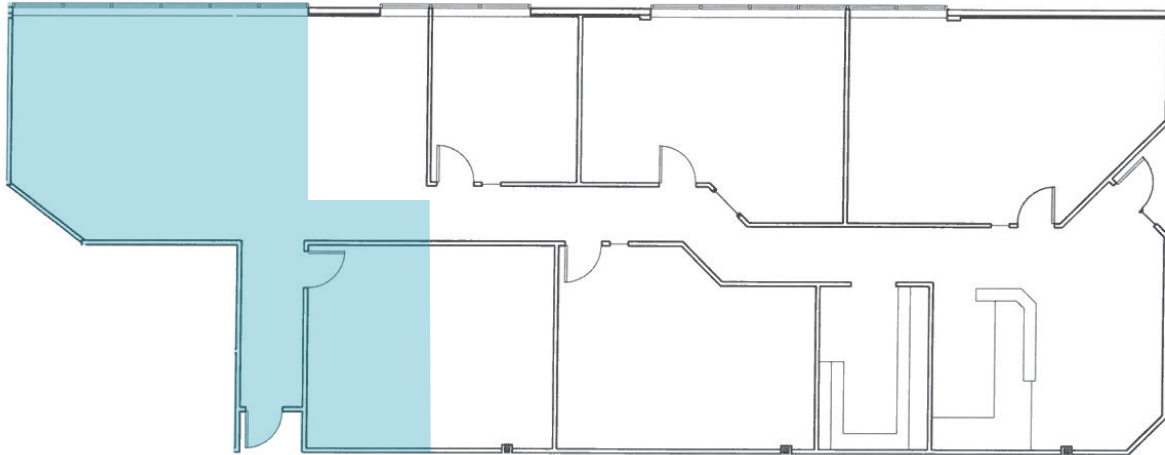
Riverpoint Corporate Center

18200-18300 Cascade Avenue South, Seattle, WA

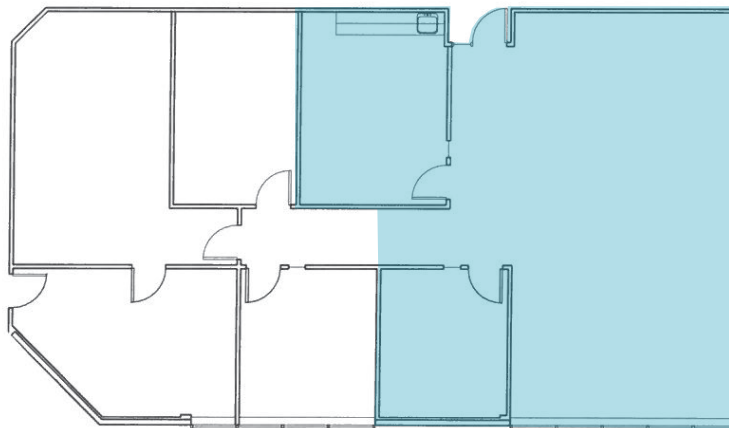
Floor Plans

 Space Available

Suite 110 - 780 sf



Suite 142 - 1,464 sf



Kevin Smith
Associate Director
+1 206 521 0287
kevin.smith@comre.com

Dave Magee
Managing Director
+1 206 521 0267
dave.magee@comre.com

1420 Fifth Avenue, Suite 2600
Seattle, Washington
Main +1 206 682 0666
Fax +1 206 521 0298
comre.com

Independently Owned and Operated / A Member of the Cushman & Wakefield Alliance

Cushman & Wakefield Copyright 2015. No warranty or representation, express or implied, is made to the accuracy or completeness of the information contained herein, and same is submitted subject to errors, omissions, change of price, rental or other conditions, withdrawal without notice, and to any special listing conditions imposed by the property owner(s). As applicable, we make no representation as to the condition of the property (or properties) in question.

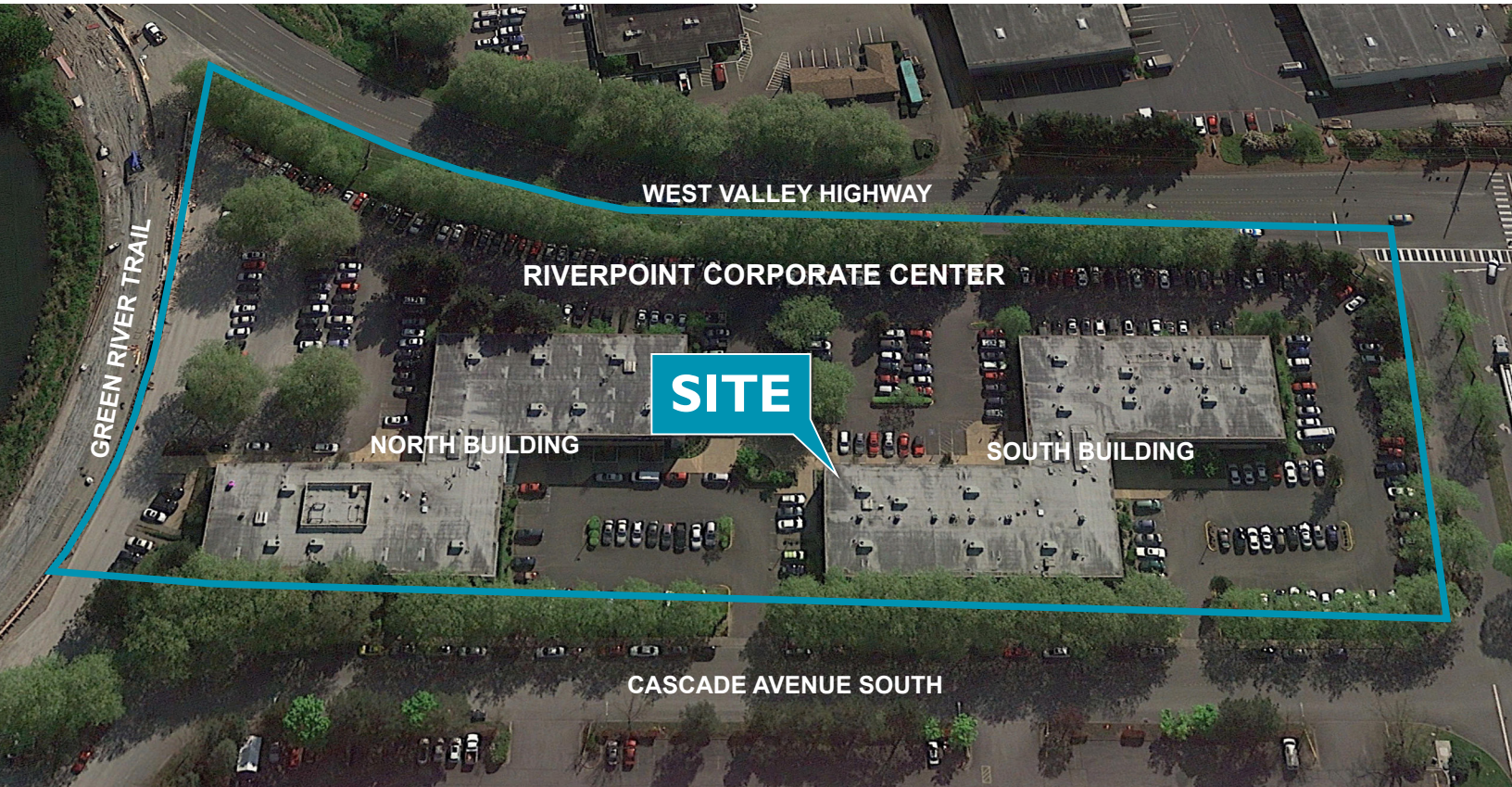


**CUSHMAN &
WAKEFIELD**
Commerce

FOR LEASE

Riverpoint Corporate Center

18200-18300 Cascade Avenue South, Seattle, WA



Kevin Smith
Associate Director
+1 206 521 0287
kevin.smith@comre.com

Dave Magee
Managing Director
+1 206 521 0267
dave.magee@comre.com

Independently Owned and Operated / A Member of the Cushman & Wakefield Alliance

Cushman & Wakefield Copyright 2015. No warranty or representation, express or implied, is made to the accuracy or completeness of the information contained herein, and same is submitted subject to errors, omissions, change of price, rental or other conditions, withdrawal without notice, and to any special listing conditions imposed by the property owner(s). As applicable, we make no representation as to the condition of the property (or properties) in question.



**CUSHMAN &
WAKEFIELD**
Commerce

FOR LEASE

Riverpoint Corporate Center

18200-18300 Cascade Avenue South, Seattle, WA

Aerial Map



Kevin Smith
Associate Director
+1 206 521 0287
kevin.smith@comre.com

Dave Magee
Managing Director
+1 206 521 0267
dave.magee@comre.com

Independently Owned and Operated / A Member of the Cushman & Wakefield Alliance

Cushman & Wakefield Copyright 2015. No warranty or representation, express or implied, is made to the accuracy or completeness of the information contained herein, and same is submitted subject to errors, omissions, change of price, rental or other conditions, withdrawal without notice, and to any special listing conditions imposed by the property owner(s). As applicable, we make no representation as to the condition of the property (or properties) in question.