



**CUSHMAN &
WAKEFIELD**
Commerce

MEDICAL OFFICE FOR LEASE

1174 East Graystone Way (2760 South)
Sugar House, Utah

GRAYSTONE HEALTH & PROFESSIONAL CENTER



Property Highlights

Great Sugar House location just off Highland Drive

- Suite 7: 708 RSF available
\$885.00/mo FS, less janitorial
- Suite 9: 295 RSF available
\$375.00/mo FS, less janitorial
- Suite 12: 196 RSF available
\$275.00/mo FS, less janitorial
- Suite 20C: 277 RSF available
\$300.00/mo FS, less janitorial
- Storage 20F: 200 RSF available
\$150.00/mo FS, less janitorial
- Suite 20G: 277 RSF available
\$275.00/mo FS, less janitorial
- Suites can be combined
- Great I-80 freeway access
- Abundant parking
- Common break area
- Shared conference room available

Current Upgrades - 2013 to Present

- New roof
- New bathroom
- New carpet & paint
- New asphalt



Mark Cannell

Associate - Office/Investment
(801) 303 5487
mcannell@comre.com

170 South Main Street
Suite 1600
Salt Lake City, UT 84101
Main +1 801 322 2000
Fax +1 801 322 2040
comre.com

Independently Owned and Operated / A Member of the Cushman & Wakefield Alliance

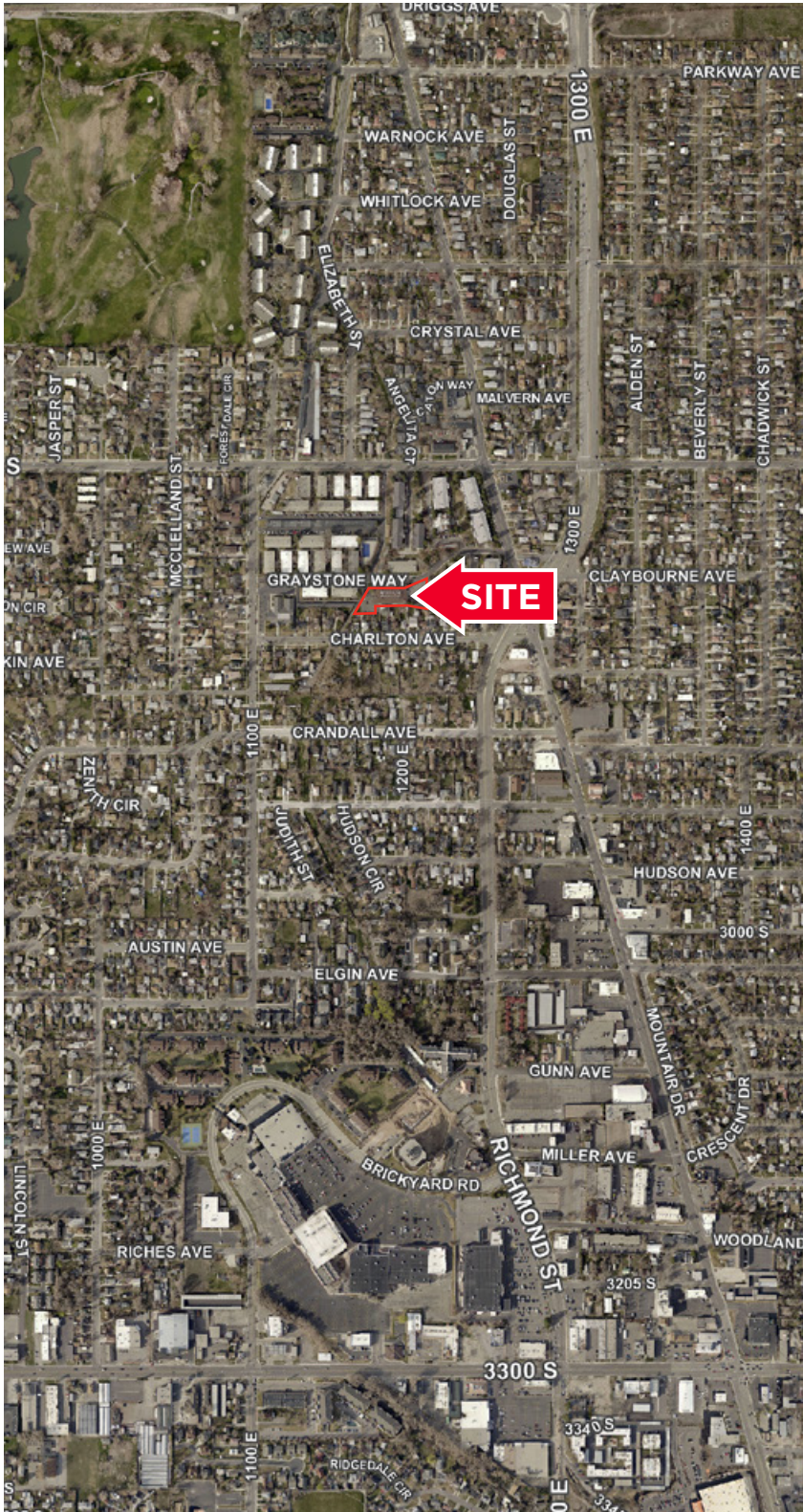
Cushman & Wakefield Copyright 2015. No warranty or representation, express or implied, is made to the accuracy or completeness of the information contained herein, and same is submitted subject to errors, omissions, change of price, rental or other conditions, withdrawal without notice, and to any special listing conditions imposed by the property owner(s). As applicable, we make no representation as to the condition of the property (or properties) in question.
(path: G:\1 - Projects\Cannell_M\1 - Flyers\1174e_GraystoneWay)



**CUSHMAN &
WAKEFIELD**
Commerce

MEDICAL OFFICE FOR LEASE

1174 East Graystone Way (2760 South)
Sugar House, Utah



Independently Owned and Operated / A Member of the Cushman & Wakefield Alliance

Cushman & Wakefield Copyright 2015. No warranty or representation, express or implied, is made to the accuracy or completeness of the information contained herein, and same is submitted subject to errors, omissions, change of price, rental or other conditions, withdrawal without notice, and to any special listing conditions imposed by the property owner(s). As applicable, we make no representation as to the condition of the property (or properties) in question.
(path: G:\1 - Projects\Cannell_M\1 - Flyers\1174e_GraystoneWay)