

Sublease Rate: \$19.00 Full Service

Property Highlights

- Conveniently located off of Highway 201
- 6,571 RSF available on the first floor
- Ample Parking
- Plug-n-play Opportunity with furniture
- Great build-out that provides a nice mix of open-space, offices, a conference room, breakroom, and a training room.



Anne Smart, sior
Director
+1 801 303 5553
asmart@comre.com

Travis Yates
Associate
+1 801 303 5414
tyates@comre.com

Chris Kirk, sior
Executive Director
+1 801 303 5495
ckirk@comre.com

170 South Main Street Suite 1600
Salt Lake City, UT 84101
Main +1 801 322 2000
Fax +1 801 322 2040
comre.com

Anne Smart, sior
Director
+1 801 303 5553
asmart@comre.com

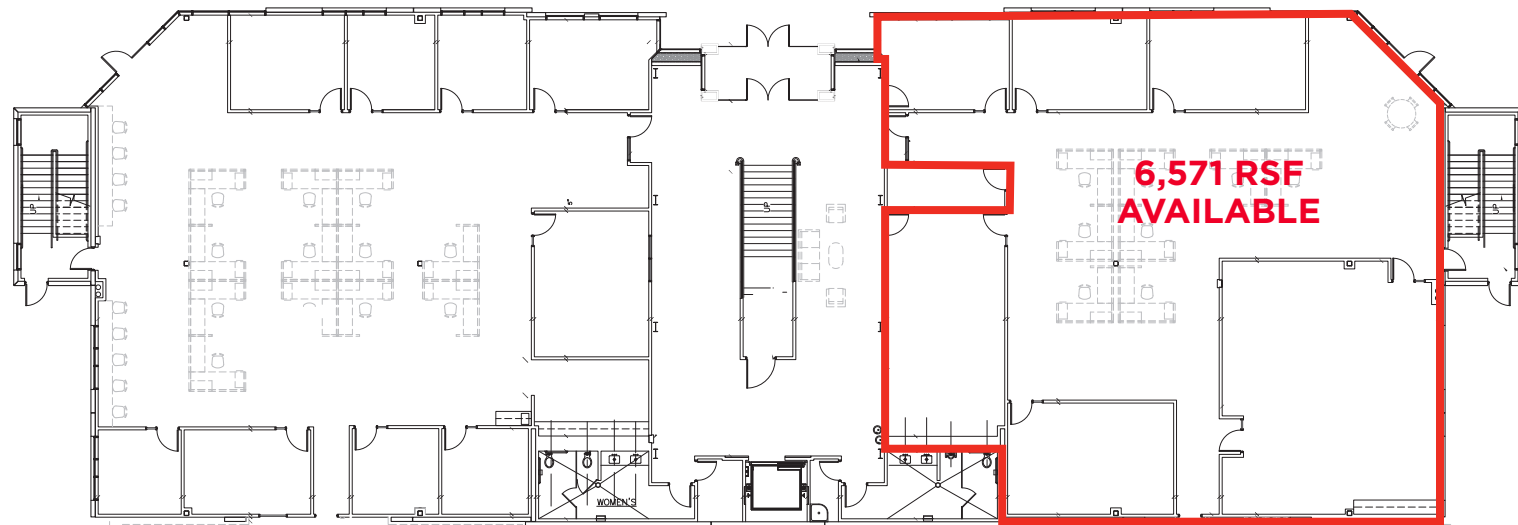
Travis Yates
Associate
+1 801 303 5414
tyates@comre.com

Chris Kirk, sior
Executive Director
+1 801 303 5495
ckirk@comre.com

170 South Main Street Suite 1600
Salt Lake City, UT 84101
Main +1 801 322 2000
Fax +1 801 322 2040
comre.com



1ST FLOOR



2ND FLOOR

