

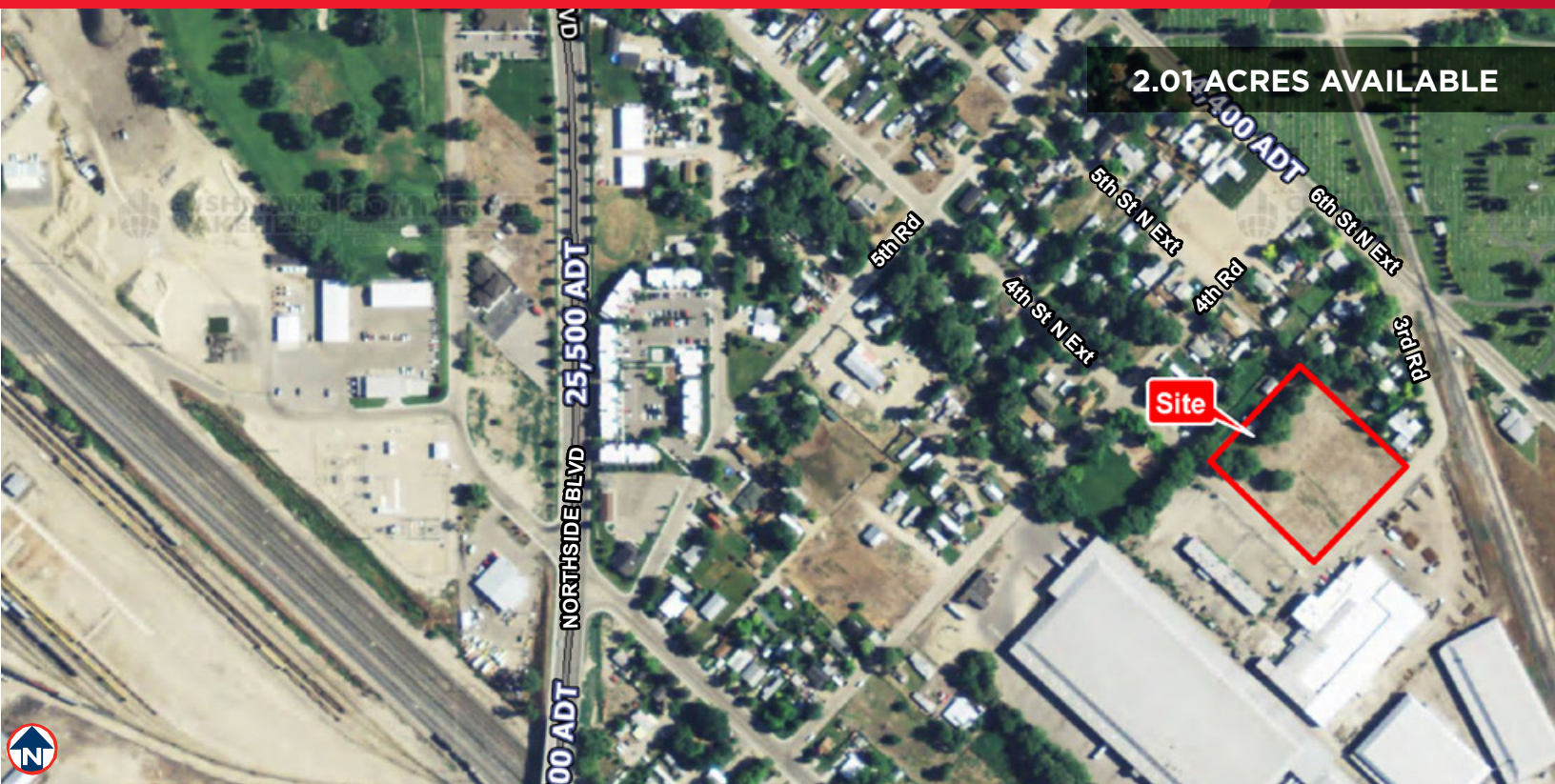


**CUSHMAN &
WAKEFIELD**
Commerce

FOR SALE OR BUILD-TO-SUIT

Heavy Industrial Zoned Land

155 4th Street North, Nampa, Idaho 83687



Property Highlights

Sale Price	\$262,797.00 (\$3.00/SF)
Build-to-Suit	Contact Agent / Negotiable
Available	2.01 Acres
Zoning	City of Nampa - Heavy Industrial
Utilities	Available to Site, Contact Agent
Parcel Number	R1275900000
Parcel Dimensions	300 Feet X 300 Feet +/-
Availability	Immediate

Listing Features

- Great Location for a Buyer Looking to Service the Boise, Meridian, Nampa and Caldwell Areas
- Located off Nampa Boulevard and 2nd Avenue
- Quick and Easy Access to I-84 and Downtown Nampa
- Build-to-Suit Option Available, Contact Agent
- Located in an Industrial Area Outside Downtown Nampa
- Ample Space for Trailer Access for Loading and Unloading
- Immediate Availability, Contact Agent to Schedule a Site Visit Today!!

DJ Thompson
Associate
Office Specialist
+1 208 287 8438
dj.thompson@comre.com

398 South 9th Street, Ste 260
Boise, Idaho 83702
Main +1 208 287 9500
Fax +1 208 287 9501
comre.com

Independently Owned and Operated / A Member of the Cushman & Wakefield Alliance

Cushman & Wakefield Copyright 2015. No warranty or representation, express or implied, is made to the accuracy or completeness of the information contained herein, and same is submitted subject to errors, omissions, change of price, rental or other conditions, withdrawal without notice, and to any special listing conditions imposed by the property owner(s). As applicable, we make no representation as to the condition of the property (or properties) in question.



**CUSHMAN &
WAKEFIELD**
Commerce

FOR SALE OR BUILD-TO-SUIT

Heavy Industrial Zoned Land

155 4th Street North, Nampa, Idaho 83687



DJ Thompson
Associate
Office Specialist
+1 208 287 8438
dj.thompson@comre.com

398 South 9th Street, Ste 260
Boise, Idaho 83702
Main +1 208 287 9500
Fax +1 208 287 9501
comre.com

Independently Owned and Operated / A Member of the Cushman & Wakefield Alliance

Cushman & Wakefield Copyright 2015. No warranty or representation, express or implied, is made to the accuracy or completeness of the information contained herein, and same is submitted subject to errors, omissions, change of price, rental or other conditions, withdrawal without notice, and to any special listing conditions imposed by the property owner(s). As applicable, we make no representation as to the condition of the property (or properties) in question.