



**CUSHMAN &
WAKEFIELD**
Commerce

FOR SUBLEASE

Union Park 1

6925 S Union Park Center / Cottonwood Heights, UT



**Creative office space for sublease in
the highly desirable Union Park area.**

Property Highlights

- **Available:** Suite 600
- **Size:** 8,258 RSF
- **Lease Rate:** \$20.00 PSF, Full Service
- **Parking Ratio:** 4/1,000
- **Direct access to I-215**
- **Great central location near many amenities**
- **November 29, 2017 LED**

Tyson Fowler

Associate - Office Specialist
+1 801 303 5413
tfowler@comre.com



170 South Main Street
Suite 1600
Salt Lake City, UT 84101
Main +1 801 322 2000
Fax +1 801 322 2040
comre.com

Independently Owned and Operated / A Member of the Cushman & Wakefield Alliance

Cushman & Wakefield Copyright 2016. No warranty or representation, express or implied, is made to the accuracy or completeness of the information contained herein, and same is submitted subject to errors, omissions, change of price, rental or other conditions, withdrawal without notice, and to any special listing conditions imposed by the property owner(s). As applicable, we make no representation as to the condition of the property (or properties) in question.
(path: G:\1 - Projects\Fowler_Tyson\1 - Flyers\6925sUnionParkCntr)



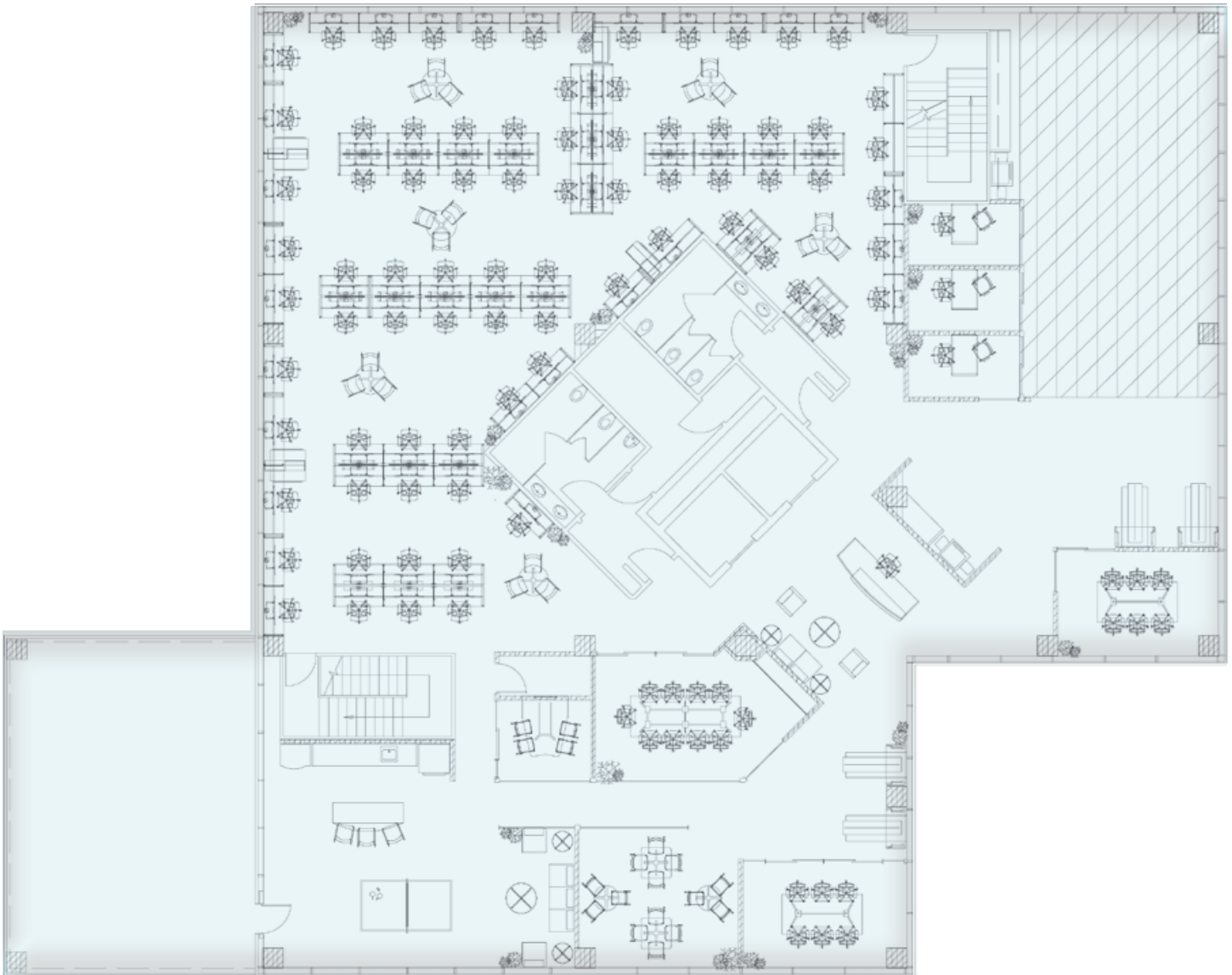
**CUSHMAN &
WAKEFIELD**
Commerce

FOR SUBLEASE

Union Park 1

6925 S Union Park Center / Cottonwood Heights, UT

Suite 600 Floor Plan



Tyson Fowler

Associate - Office Specialist
+1 801 303 5413
tfowler@comre.com

170 South Main Street
Suite 1600
Salt Lake City, UT 84101
Main +1 801 322 2000
Fax +1 801 322 2040
comre.com

Independently Owned and Operated / A Member of the Cushman & Wakefield Alliance

Cushman & Wakefield Copyright 2016. No warranty or representation, express or implied, is made to the accuracy or completeness of the information contained herein, and same is submitted subject to errors, omissions, change of price, rental or other conditions, withdrawal without notice, and to any special listing conditions imposed by the property owner(s). As applicable, we make no representation as to the condition of the property (or properties) in question.
(path: G:\1 - Projects\Fowler_Tyson\1 - Flyers\6925sUnionParkCntr)



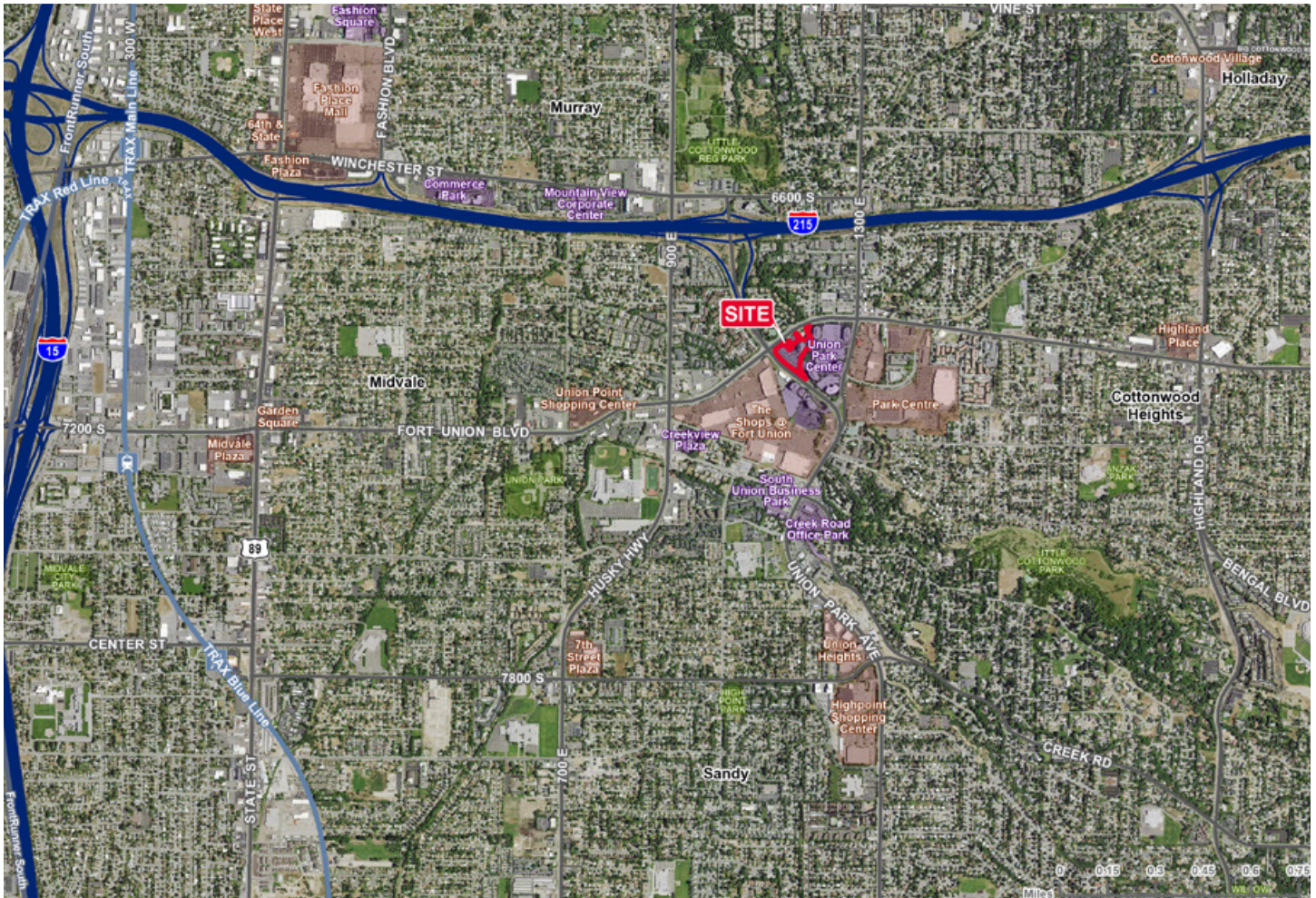
**CUSHMAN &
WAKEFIELD**
Commerce

FOR SUBLEASE

Union Park 1

6925 S Union Park Center / Cottonwood Heights, UT

Aerial Map



Interior Photos



Tyson Fowler

Associate - Office Specialist
+1 801 303 5413
tfowler@comre.com

170 South Main Street
Suite 1600
Salt Lake City, UT 84101
Main +1 801 322 2000
Fax +1 801 322 2040
comre.com

Independently Owned and Operated / A Member of the Cushman & Wakefield Alliance

Cushman & Wakefield Copyright 2016. No warranty or representation, express or implied, is made to the accuracy or completeness of the information contained herein, and same is submitted subject to errors, omissions, change of price, rental or other conditions, withdrawal without notice, and to any special listing conditions imposed by the property owner(s). As applicable, we make no representation as to the condition of the property (or properties) in question.
(path: G:\1 - Projects\Fowler_Tyson\1 - Flyers\6925sUnionParkCntr)