



114,750 square feet on 20 acres in the Utah Industrial Depot, Manufacturing Building, Heavy Power.

Property Highlights

- Size: Office area: 10,300 SF
Shop area: 104,450 SF
Total: 114,750 SF
- Clear Height: 21'-25'
- Doors: 5 Dock high doors
3 Ground level doors
- Power: 8,000 amps, 480/277 volts, 3 phase
- Column Spacing: 50' x 50'
- Lighting: 6 lamp T-5, 277 volt
- Floor: 6 inch
- Compressed air
- Sales Price: **\$10,000,000**
- Lease Rate: **\$0.58 NNN**



Mike Farmer, sior
Executive Director
+1 801 303 5422
mfarmer@comre.com

Rick Newton
Director
+1 801 303 5485
rnewton@comre.com

Phillip Eilers
Associate
+1 801 303 5426
peilers@comre.com

170 South Main Street, Suite 1600
Salt Lake City, UT 84101
Main +1 801 322 2000
Fax +1 801 322 2040
comre.com

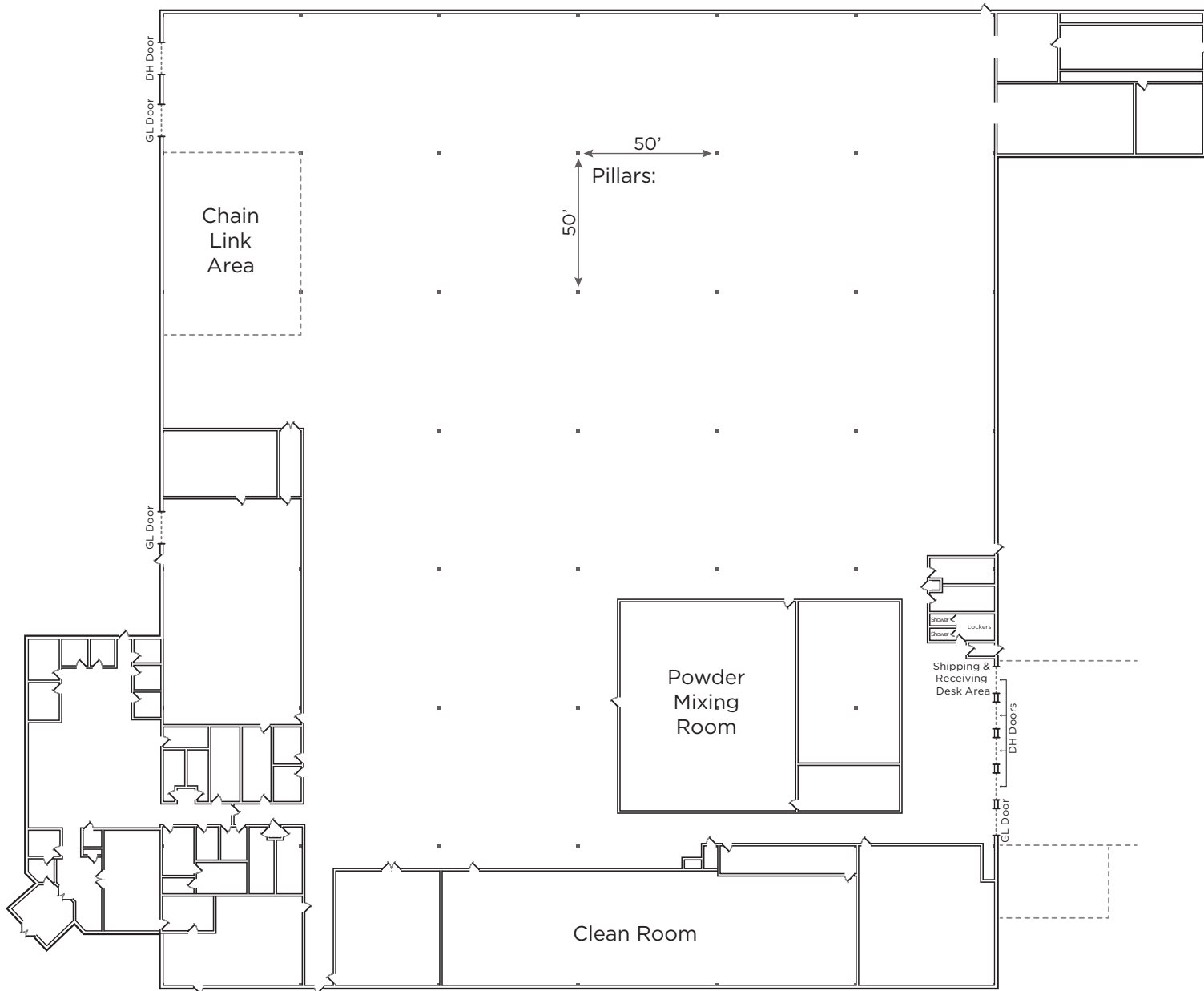
Mike Farmer, sior
Executive Director
+1 801 303 5422
mfarmer@comre.com

Rick Newton
Director
+1 801 303 5485
rnewton@comre.com

Phillip Eilers
Associate
+1 801 303 5426
peilers@comre.com

170 South Main Street, Suite 1600
Salt Lake City, UT 84101
Main +1 801 322 2000
Fax +1 801 322 2040
comre.com

Floor Plan



Interior Photos

