

# AXIS \* BUILDING

175 WEST 200 SOUTH • SALT LAKE CITY, UTAH

## \* FEATURES

- Prime downtown location across from the Salt Palace Convention Center
- Newly renovated creative space
- Parking in adjacent structure at a 4/1,000 RSF parking ratio



**SUITE  
1000**

6,426 rentable sq. ft. for lease  
\$23.00 per rentable sq. ft., full service  
Space is in move-in condition

**SUITE  
2004**

2,517 rentable sq. ft. for lease  
\$23.00 per rentable sq. ft., full service  
Space is in shell condition and ready for buildout  
Remodel includes full glass entry and high ceilings

### FOR MORE INFORMATION, PLEASE CONTACT

**Marty Plunkett, CCIM**  
Vice President  
+1 801 947 3975  
marty.plunkett@cbre.com  
www.cbre.com/marty.plunkett

**Melissa McIntyre**  
Senior Associate  
+1 801 947 3974  
melissa.mcintyre@cbre.com  
www.cbre.com/melissa.mcintyre

**Dave Heninger**  
Senior Associate  
+1 801 947 3941  
dave.heninger@cbre.com  
www.cbre.com/dave.heninger

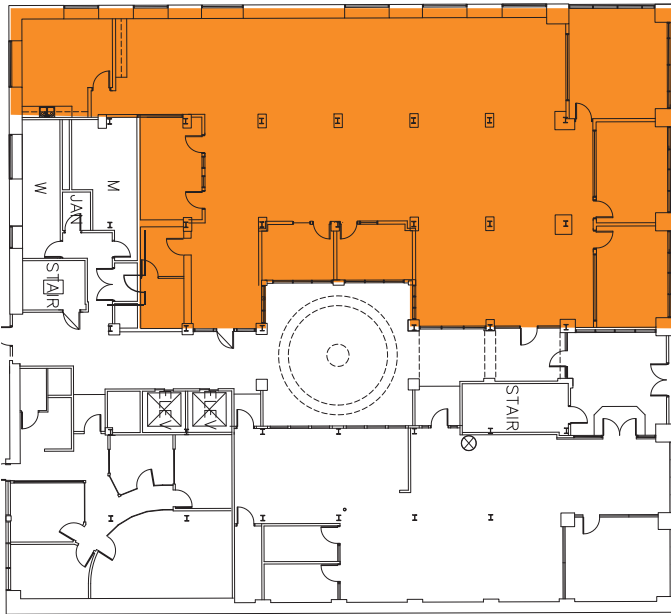


**CBRE**

# AXIS \* BUILDING

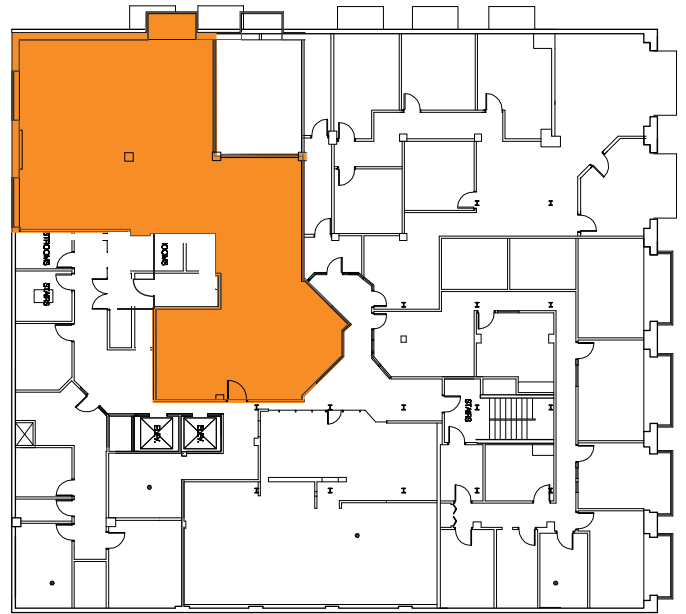
175 WEST 200 SOUTH • SALT LAKE CITY, UTAH

## FLOOR PLANS



### FIRST FLOOR

Suite 1000  
6,426 RSF



### SECOND FLOOR

Suite 2004  
2,517 RSF



CBRE | 222 South Main | 4th Floor | Salt Lake City, UT 84101 | [www.cbre.com/slc](http://www.cbre.com/slc)

© 2016 CBRE, Inc. This information has been obtained from sources believed reliable. We have not verified it and make no guarantee, warranty or representation about it. Any projections, opinions, assumptions or estimates used are for example only and do not represent the current or future performance of the property. You and your advisors should conduct a careful, independent investigation of the property to determine to your satisfaction the suitability of the property for your needs.

**CBRE**