



**CUSHMAN &
WAKEFIELD**
Commerce

FOR LEASE

Family Dollar Retail Space

309 F Street, Rupert, ID 83350

STRONG COTENANCY & ANCHORS



Available: 2,236 - 4,515 SF

Rate: \$8.00/SF NNN

Property Highlights

Space Status	Warm Shell - Ready For Build-Out
T.I. Allowance	Negotiable, Contact Agent
Amenities	Fire Suppression / Sprinklers Installed, High Visibility, Building & Potential Monument Signage Space, Excellent Location Just Off Highway 24 in Downtown Rupert
Zoning	Commercial
Parking	Ample / Shared / Open
Traffic Count	4,700 CPD - Scott Avenue & F St.
LockBox	Yes, Contact Agent For Code

Listing Features

- Available Space is Currently in Warm Shell Condition, Negotiable Tenant Improvement Allowance Available to Divide Space into Two Suites, Add Additional Exterior Windows & Other Custom Build-Out Options, Contact Agents for more Details
- Strong Anchor & Co-Tenants Including Kings, Family Dollar & Computer Technology Inc.
- Great Location with Good Traffic Counts & Demographics
- Surrounded by Local & National Retailers, Restaurants, Financial Institutions, and Other Services
- Directly West of Pizza Hut, Maverik Country Store, Stinker Store & Ridley's Food & Drug
- On-Site LockBox, Contact Agents for Code for a Walk Through Today!!!

James Stewart
Director
Retail Specialist
+1 (208) 287 9487
james.stewart@comre.com

Mark Haroldsen
Director
Investment Specialist
+1 (435) 575 5635
mharoldsen@comre.com

398 South 9th Street, Ste 260
Boise, Idaho 83702
Main +1 208 287 9500
Fax +1 208 287 9501
comre.com

Independently Owned and Operated / A Member of the Cushman & Wakefield Alliance

Cushman & Wakefield Copyright 2015. No warranty or representation, express or implied, is made to the accuracy or completeness of the information contained herein, and same is submitted subject to errors, omissions, change of price, rental or other conditions, withdrawal without notice, and to any special listing conditions imposed by the property owner(s). As applicable, we make no representation as to the condition of the property (or properties) in question.



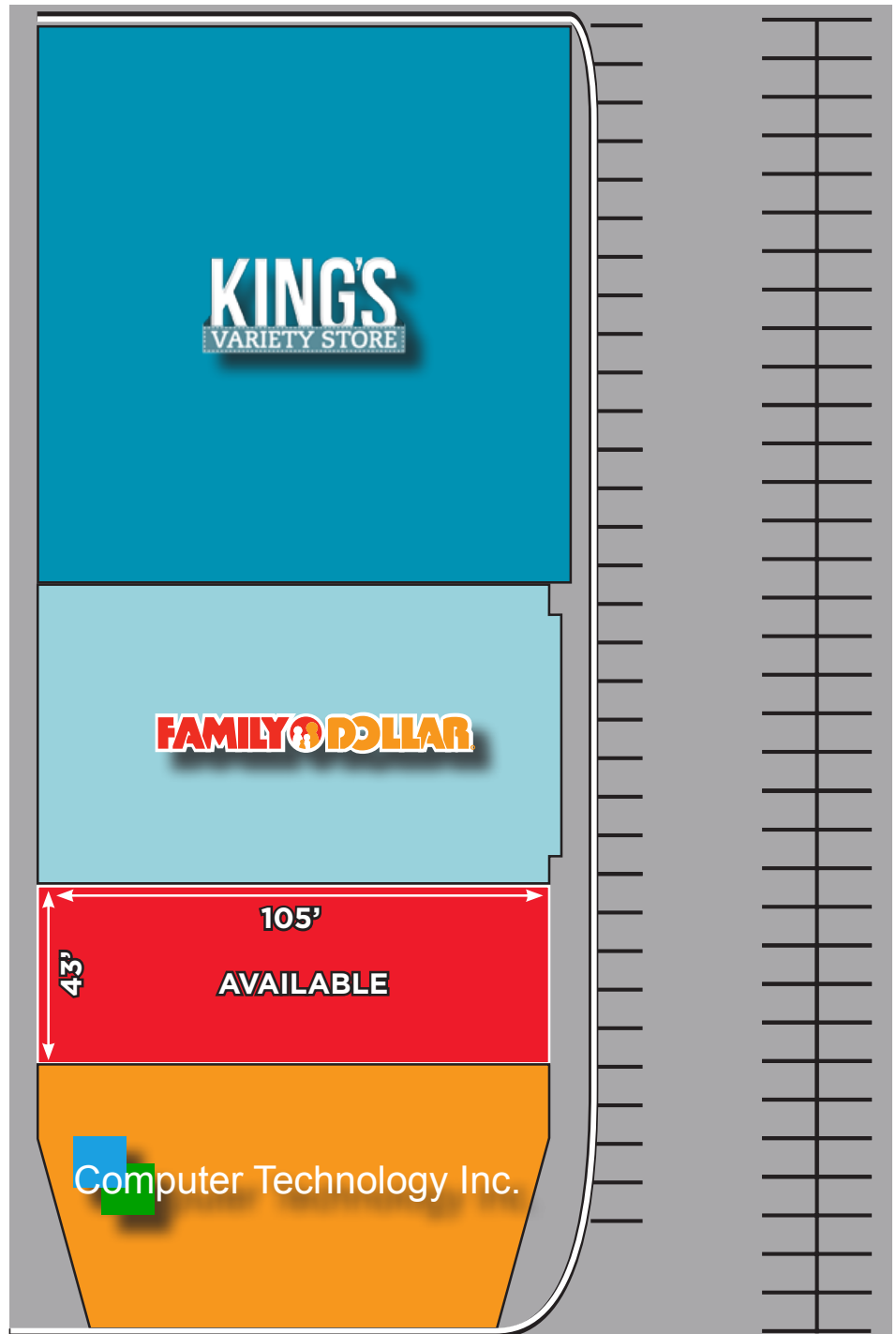
**CUSHMAN &
WAKEFIELD**
Commerce

FOR LEASE

Family Dollar Retail Space

309 F Street, Rupert, ID 83350

Available - 2,236 - 4,515 Square Feet - \$8.00/SF NNN



James Stewart
Director
Retail Specialist
+1 (208) 287 9487
james.stewart@comre.com

Mark Haroldsen
Director
Investment Specialist
+1 (435) 575 5635
mharoldsen@comre.com

398 South 9th Street, Ste 260
Boise, Idaho 83702
Main +1 208 287 9500
Fax +1 208 287 9501
comre.com

Independently Owned and Operated / A Member of the Cushman & Wakefield Alliance

Cushman & Wakefield Copyright 2015. No warranty or representation, express or implied, is made to the accuracy or completeness of the information contained herein, and same is submitted subject to errors, omissions, change of price, rental or other conditions, withdrawal without notice, and to any special listing conditions imposed by the property owner(s). As applicable, we make no representation as to the condition of the property (or properties) in question.



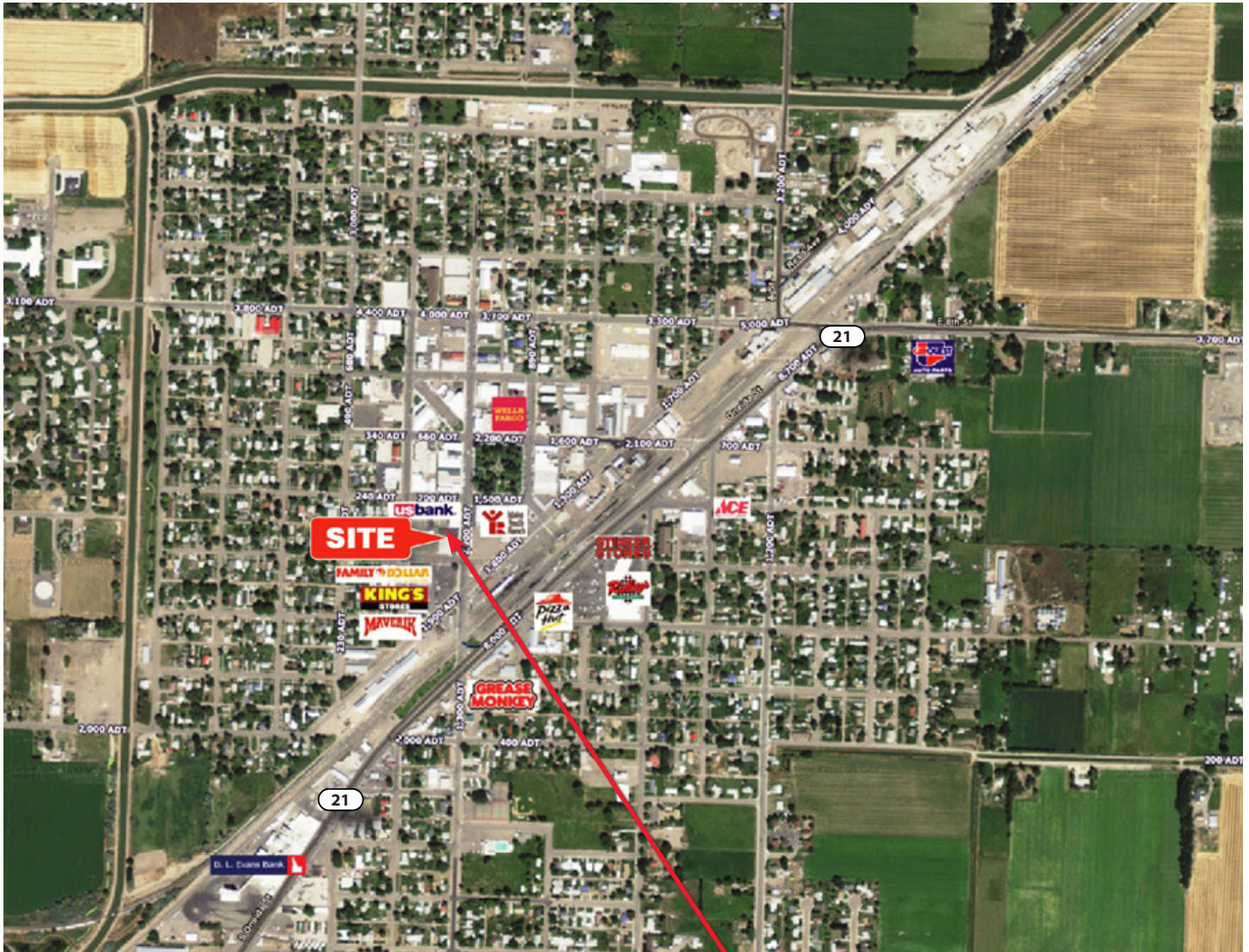
**CUSHMAN &
WAKEFIELD**
Commerce

FOR LEASE

Family Dollar Retail Space

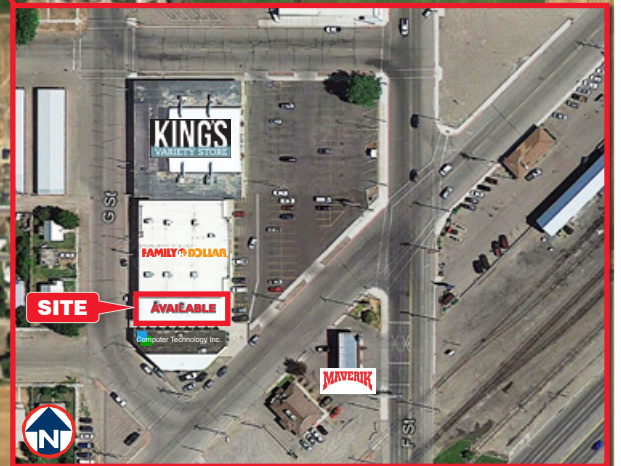
309 F Street, Rupert, ID 83350

Location Aerial / Demographics



DEMOGRAPHICS	1 MILE	3 MILE	5 MILE
POPULATION			
2015 Estimated Population	5,006	7,810	10,762
2020 Projected Population	5,045	7,884	10,985
HOUSEHOLDS			
2015 Estimated Households	1,867	2,885	3,940
2020 Projected Households	1,889	2,926	4,037
2015 Est. Average HH Income	\$45,669	\$47,649	\$49,187
2020 Est. Average HH Income	\$52,504	\$54,633	\$56,292
BUSINESSES / EMPLOYEES			
Total Businesses	336	479	610
Total Employees	2,831	3,924	5,157

SOURCE: U.S. BUREAU OF THE CENSUS, 2010 CENSUS OF POPULATION AND HOUSING. ESRI FORECASTS FOR 2014 AND 2019. ESRI CONVERTED CENSUS 2000 DATA INTO 2010 GEOGRAPHY



Independently Owned and Operated / A Member of the Cushman & Wakefield Alliance

Cushman & Wakefield Copyright 2015. No warranty or representation, express or implied, is made to the accuracy or completeness of the information contained herein, and same is submitted subject to errors, omissions, change of price, rental or other conditions, withdrawal without notice, and to any special listing conditions imposed by the property owner(s). As applicable, we make no representation as to the condition of the property (or properties) in question.