

4.55 ACRES OF LAND LAS VEGAS, NV 89118

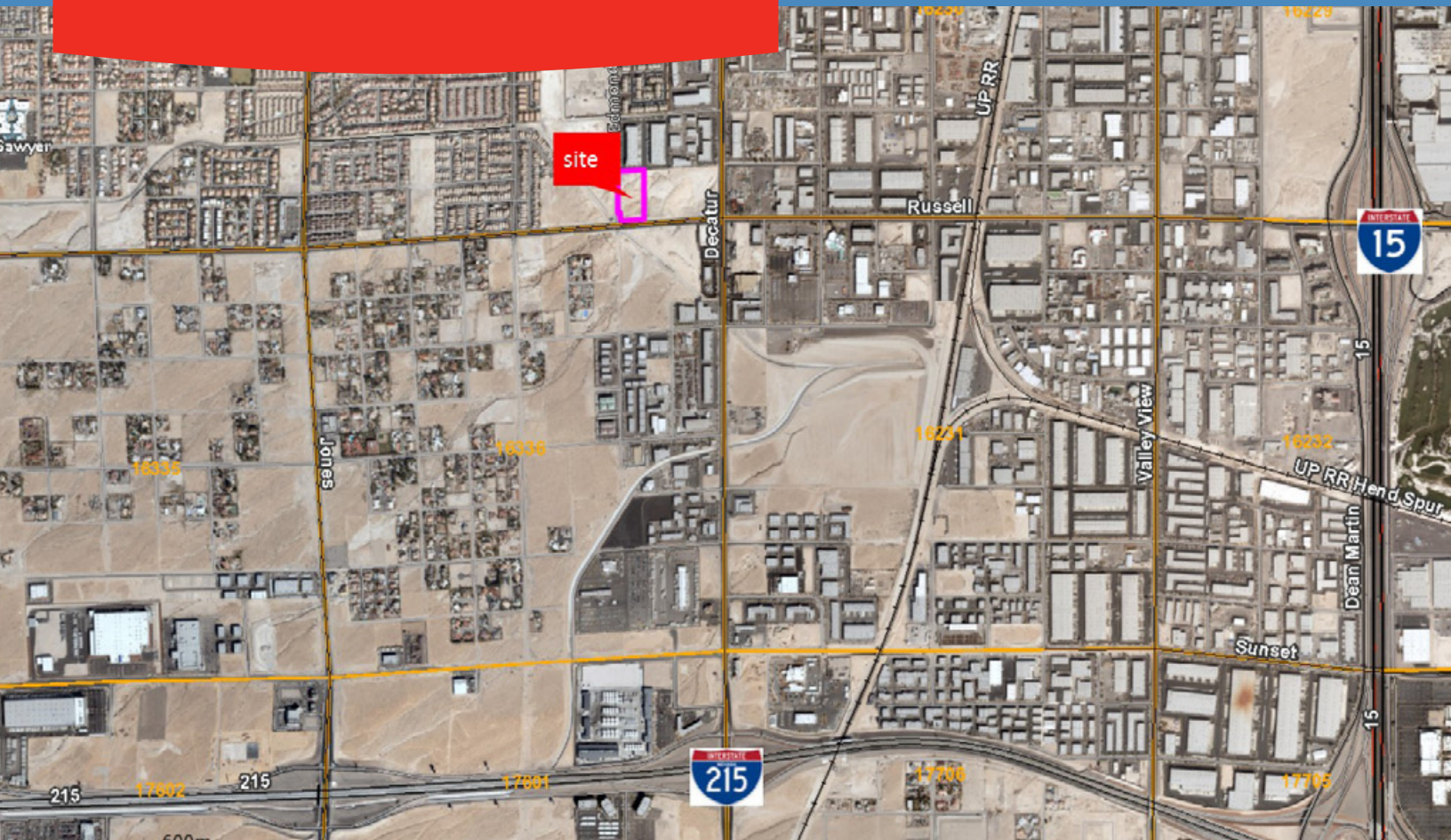


**CUSHMAN &
WAKEFIELD®**

COMMERCE
REAL ESTATE SOLUTIONS • COMRE.COM
INDEPENDENTLY OWNED AND OPERATED

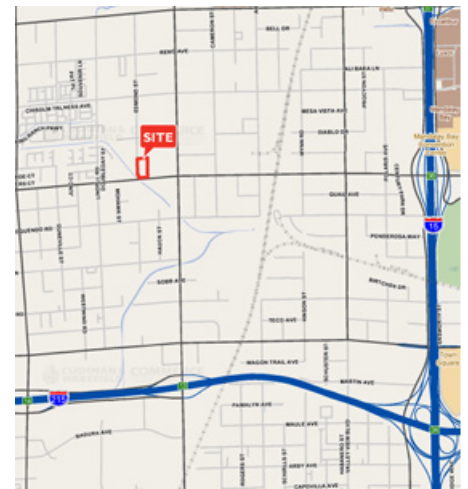
4.55 ACRES OF LAND ZONED C-2

FOR SALE



PROPERTY FEATURES

- 4.55 Acres of land - Southwest location
- Zoned C-2
- Ideal development opportunity for commercial/industrial use
- Frontage on Russell Road - West
- Easy Freeway access via 215 Beltway & Decatur Blvd.
- Within minutes from Las Vegas Blvd. and the Strip
- APN: 163-25-802-009
- Price: \$2,250,000 (\$11.35/SF)



For more information, please contact:

ART FARMANALI, SIOR
702.688.6912
afarmanali@comre.com

CUSHMAN & WAKEFIELD | COMMERCE
3773 Howard Hughes Parkway, Suite 100 S
Las Vegas, Nevada 89169
(702) 796 7900
www.comre.com

©2014, Commerce Real Estate Solutions. Disclaimer: The above information is given with the obligation that all negotiations relating to the purchase, renting, or leasing of the property described above shall be conducted through Commerce Real Estate Solutions. No warranty or representation, express or implied, is made as to the accuracy of the information contained herein, and same is submitted subject to errors, omissions, change of price, rental or other encumbrances, withdrawal without notice, and to any special listing conditions imposed by the seller. Prospective buyers should conduct their own due diligence. Some aerial photography by DigitalGlobe or Aerials Express.
path: K:\1 - Projects\Las Vegas Office\Art Farmanali\1. Flyers\4.55 acres