

# WRIGHT CREEK BUSINESS PARK SINCLAIR STREET BREMERTON, WA

LOTS FOR SALE

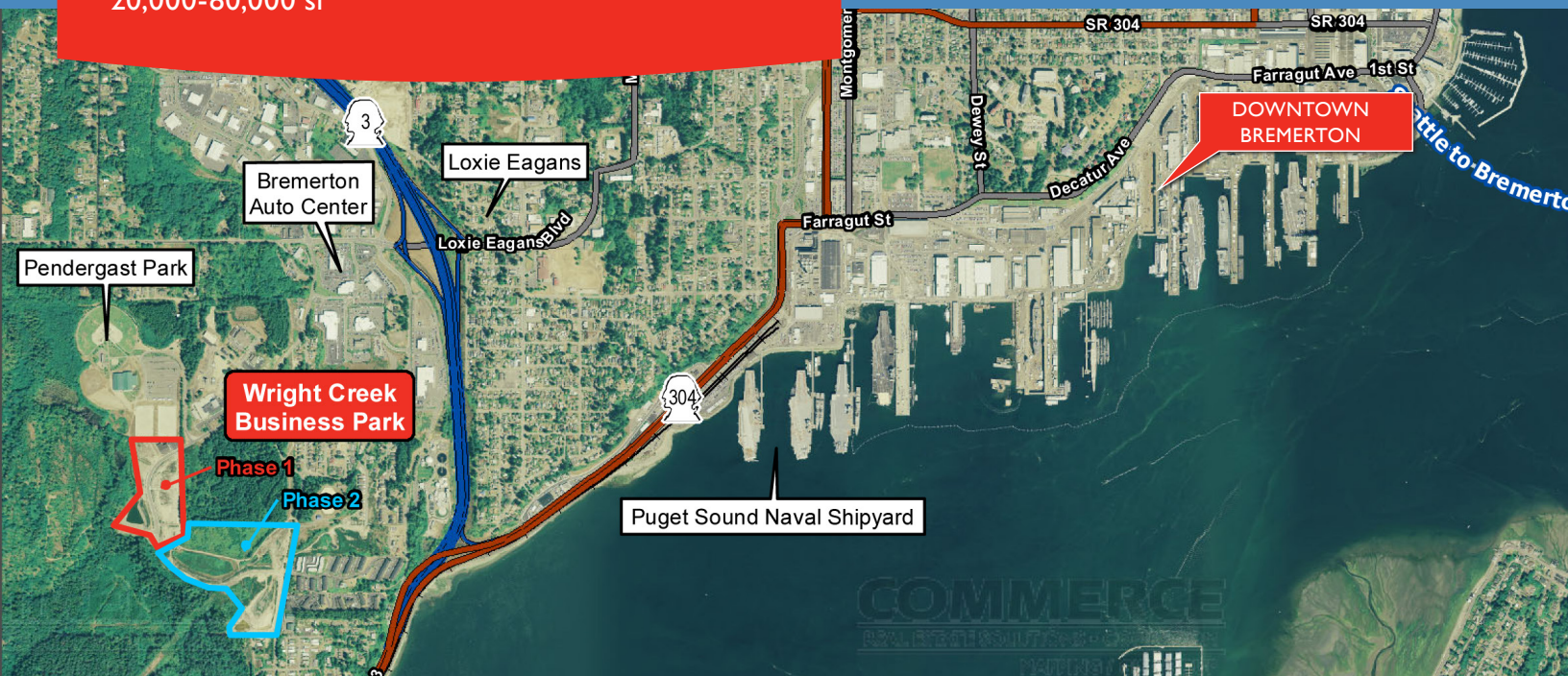
20,000-80,000 sf



**CUSHMAN &  
WAKEFIELD®**

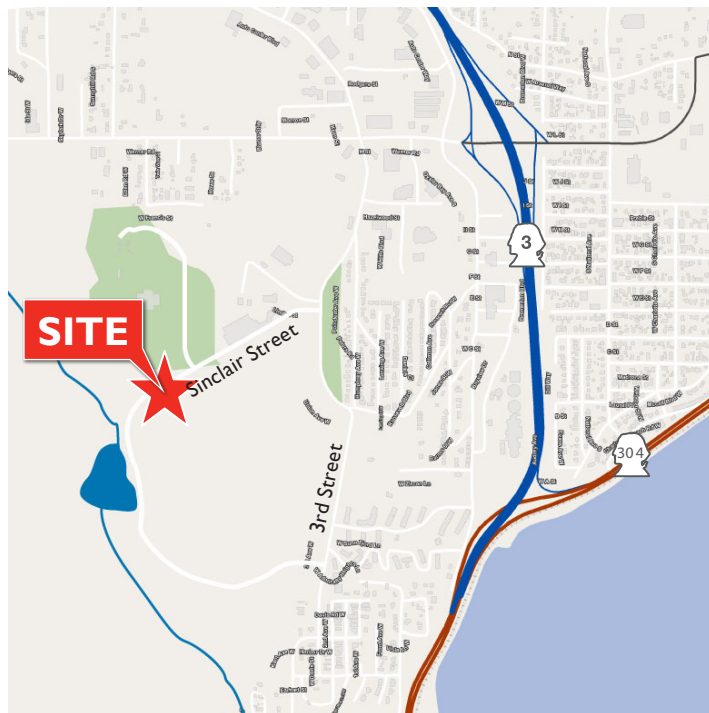
**COMMERCE**  
REAL ESTATE SOLUTIONS • COMRE.COM  
INDEPENDENTLY OWNED AND OPERATED

LOTS FOR SALE



## PROPERTY FEATURES

- Pads finished and ready to build
- Zoned for industrial, office, retail and medical
- Central to Tacoma and Seattle
- 7 minutes to PSNS West Gate, 11 minutes to Bremerton-Seattle ferry, 25 minutes to Tacoma Narrows Bridge
- Protective CC&R's to maintain quality
- All lots connected to park storm detention; no loss on pad
- All utilities to edge of lot: gas, electric, fiber
- Curb, gutter, sidewalk complete
- Seller financing available
- Seller will build to suit for lease or purchase
- \$8.50 PSF of land area



For more information, please contact:

**GREG MILLERD**  
Associate Director  
(206) 521 0237  
greg.millerd@comre.com

**RICK CADWELL**  
Director  
(360) 865 1818  
rick.cadwell@comre.com

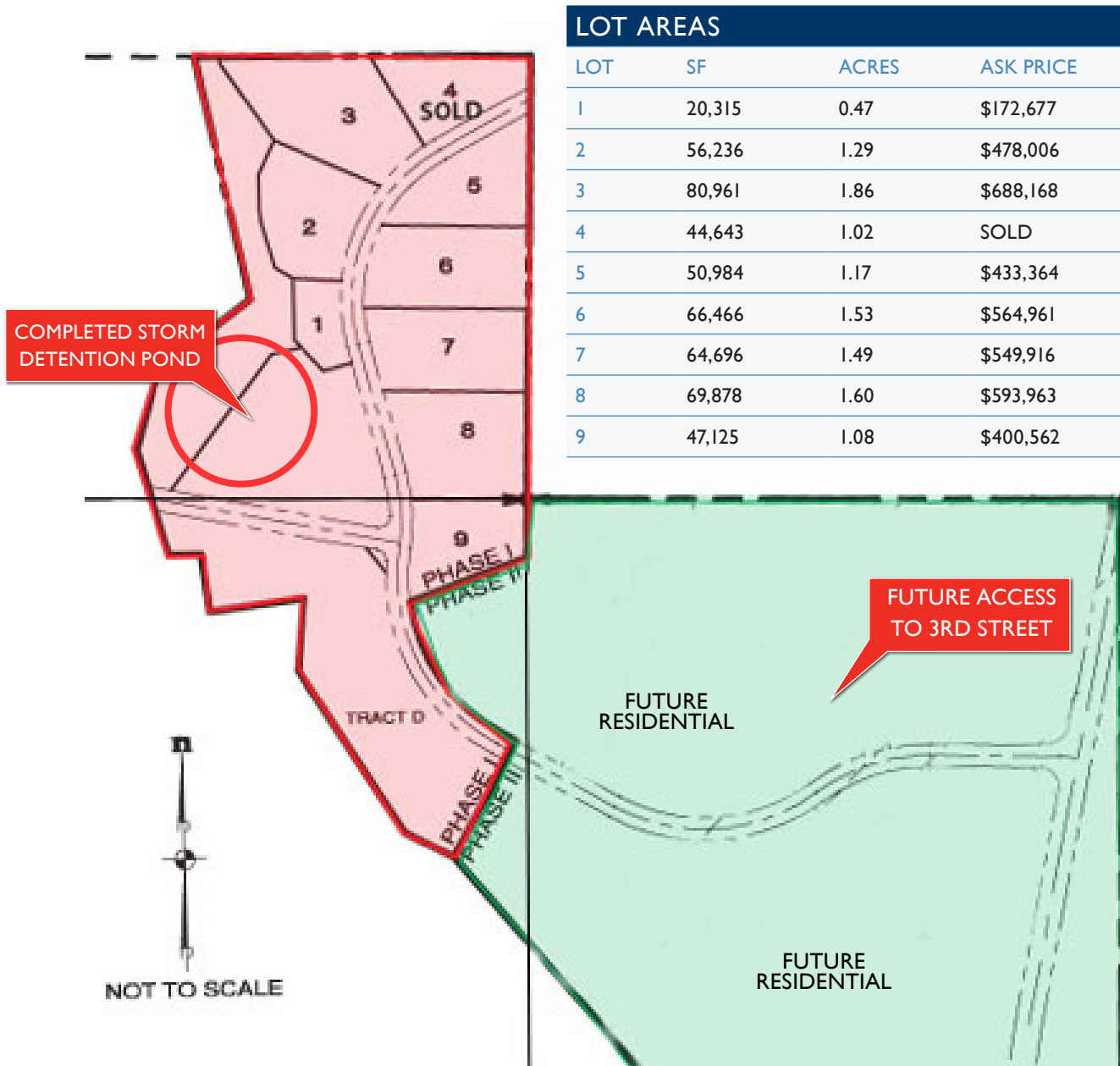
**CUSHMAN & WAKEFIELD | COMMERCE**  
1420 Fifth Avenue, Suite 2600  
Seattle, Washington 98101  
(206) 682 0666  
www.comre.com

©2014, Commerce Real Estate Solutions. Disclaimer: The above information is given with the obligation that all negotiations relating to the purchase, renting, or leasing of the property described above shall be conducted through Commerce Real Estate Solutions. No warranty or representation, express or implied, is made as to the accuracy of the information contained herein, and same is submitted subject to errors, omissions, change of price, rental or other encumbrances, withdrawal without notice, and to any special listing conditions imposed by the seller. Prospective buyers should conduct their own due diligence. Some aerial photography by DigitalGlobe or Aerials Express.

# WRIGHT CREEK BUSINESS PARK

Sinclair Street, Bremerton, WA 98312

20,000-80,000 SF  
AVAILABLE



For more information, please contact:

**GREG MILLERD**  
Associate Director  
(206) 521 0237  
greg.millerd@comre.com

**RICK CADWELL**  
Director  
(360) 865 1818  
rick.cadwell@comre.com

**CUSHMAN & WAKEFIELD | COMMERCE**  
1420 Fifth Avenue, Suite 2600  
Seattle, Washington 98101  
(206) 682 0666  
www.comre.com

©2014, Commerce Real Estate Solutions. Disclaimer: The above information is given with the obligation that all negotiations relating to the purchase, renting, or leasing of the property described above shall be conducted through Commerce Real Estate Solutions. No warranty or representation, express or implied, is made as to the accuracy of the information contained herein, and same is submitted subject to errors, omissions, change of price, rental or other encumbrances, withdrawal without notice, and to any special listing conditions imposed by the seller. Prospective buyers should conduct their own due diligence. Some aerial photography by DigitalGlobe or Aerials Express.