

RIVERWALK CENTER II

RIVERWALK CENTER OFFICE SPACE
1673 SHORELINE DRIVE • BOISE

Rafanelli
& Nahas

FOR LEASING
INFORMATION

SCOTT SCHOENHERR



208.947.0407
208.631.7611 (cell)



scotts@rafnah.com



408 E. Parkcenter Blvd.
Suite 330
Boise, ID 83706

FAX: 208.947.0411



AVAILABLE FOR LEASE

OFFICE SPACE FOR LEASE

- SUITE 260
- 965 SQ. FT.
- LEASE RATE: \$19.00 SQ. FT. FLSV

AMENITIES INCLUDE:

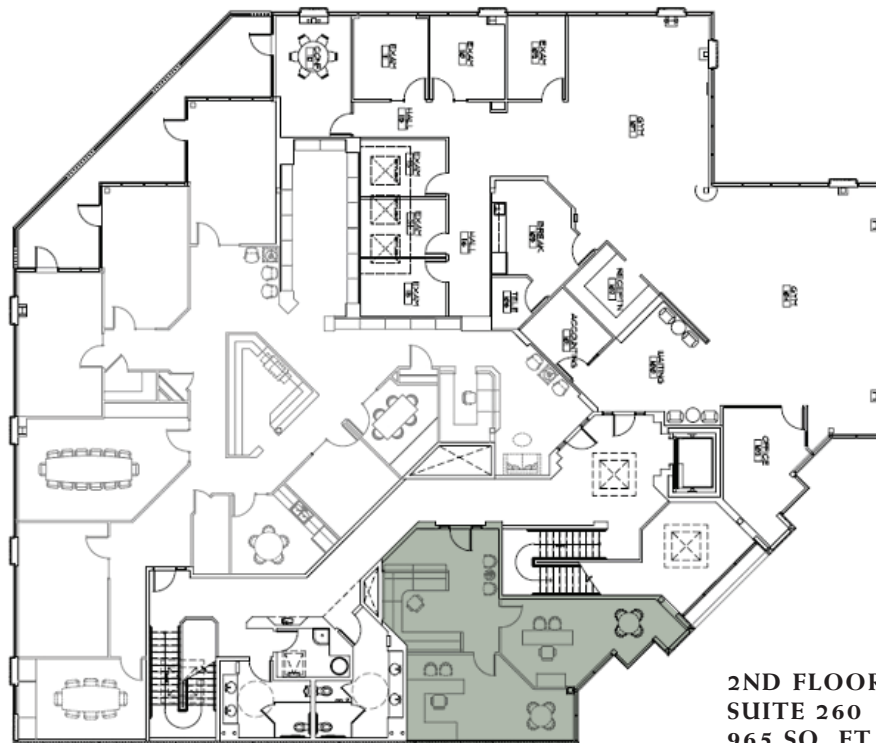
- CLASS A OFFICE SPACE LOCATED NEAR DOWNTOWN
- EXCELLENT LOCATION DIRECTLY ADJACENT TO THE BOISE RIVER AND GREENBELT
- AMPLE PARKING FOR TENANTS, GUESTS AND STAFF
- EASY ACCESS TO THE CONNECTOR AND I-84

FEATURES

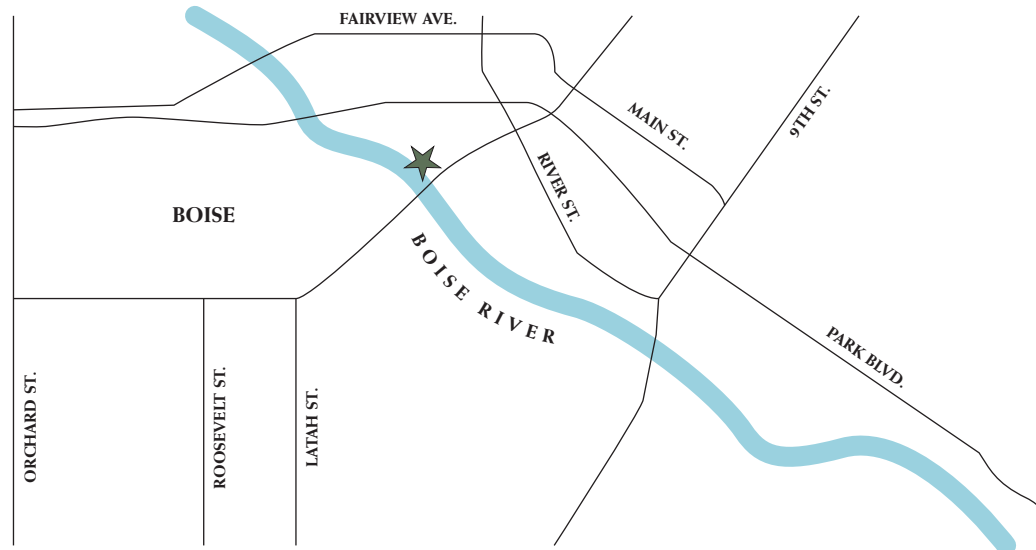
RIVERWALK CENTER II

RIVERWALK CENTER OFFICE SPACE
1673 SHORELINE DRIVE • BOISE

FLOOR PLAN



LOCATION MAP



Rafanelli
& Nahas

FOR LEASING
INFORMATION

SCOTT SCHOENHERR



208.947.0407
208.631.7611 (cell)



scotts@rafnah.com



408 E. Parkcenter Blvd.
Suite 330
Boise, ID 83706

FAX: 208.947.0411