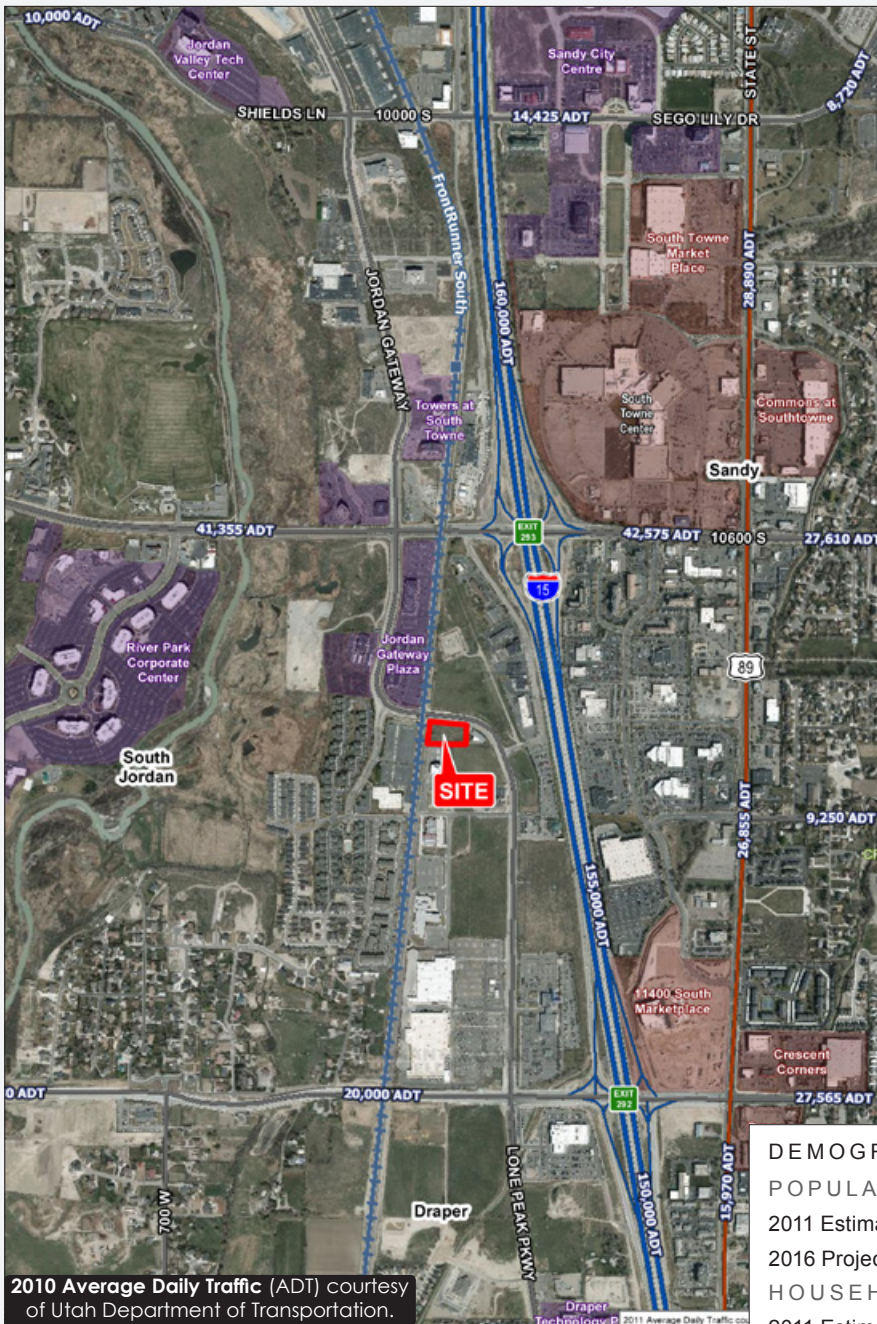


For Sale

Jordan Gateway Parcel

10902 South Jordan Gateway • South Jordan, Utah 84095



PROPERTY INFORMATION:

- Size: 1.58 acres
- Sales Price: \$825,000
- Zoning: Commercial
- Adjacent to FrontRunner
- Easy access to 10600 South & 11400 South exits on I-15
- Filled and graded lot
- Ready for immediate development

DEMOGRAPHICS

POPULATION

	1 Mile	3 Mile	5 Mile
2011 Estimated Population	5,792	89,311	255,395
2016 Projected Population	6,256	96,473	275,973

HOUSEHOLDS

	1 Mile	3 Mile	5 Mile
2011 Estimated Households	1,986	28,232	77,886
2016 Projected Households	2,108	29,958	82,654
2011 Est. Median HH Income	\$70,078	\$74,355	\$78,352
2011 Est. Average HH Income	\$81,489	\$85,534	\$88,427
2011 Est. Per Capita Income	\$27,951	\$27,186	\$27,158

Source: U.S. Census Bureau, Census 2010 Data.
Esri forecasts for 2011 and 2016.

For additional information, please contact:

PETER HANLON
801.303.5455
phanlon@comre.com



CUSHMAN & WAKEFIELD

COMMERCE
REAL ESTATE SOLUTIONS • COMRE.COM
INDEPENDENTLY OWNED AND OPERATED

170 South Main Street, Suite 1600 | Salt Lake City, Utah 84101
Tel 801-322-2000 • Fax 801-322-2040 • comre.com

©2013, Commerce Real Estate Solutions. Disclaimer: The above information is given with the obligation that all negotiations relating to the purchase, renting, or leasing of the property described above shall be conducted through Commerce Real Estate Solutions. No warranty or representation, express or implied, is made as to the accuracy of the information contained herein, and same is submitted subject to errors, omissions, change of price, rental or other encumbrances, withdrawal without notice, and to any special listing conditions imposed by the seller. Prospective buyers should conduct their own due diligence. Some aerial photography by DigitalGlobe or Aerials Express.
path: G:\1 - Projects\Hanlon, Peter\1 - Flyers\10902sJordanGateway