

CYPRESS SEMICONDUCTOR BUILDING

5,83 | RSF

FOR LEASE



2700 162nd Street SW
Lynnwood, Washington 98087

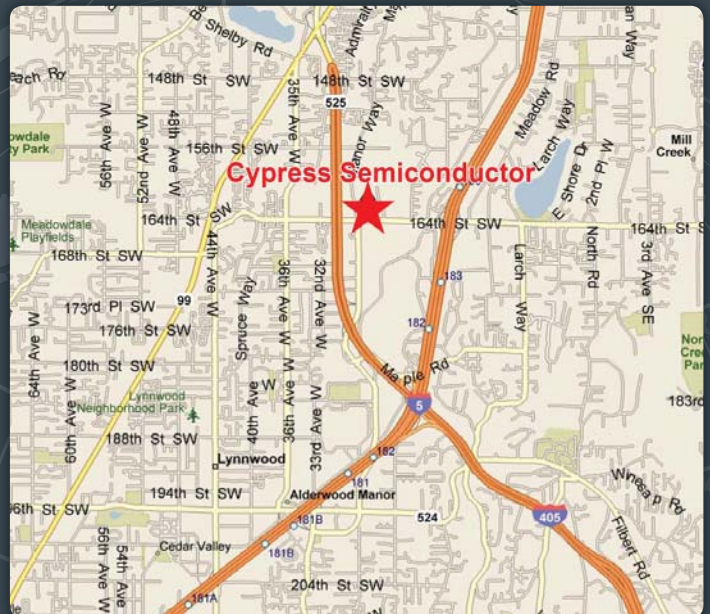
Property Narrative

- Aggressive Landlord
- Approximately 5,831 RSF on the 3rd Floor
- Flexible Term
- High Quality Furniture Available
- Cat 5 Cabling
- \$19.00/RSF Gross
- Available May 1, 2013
- Shared boardroom and lunchroom
- 5/1,000 Parking

marketed by:

Brian Toy 425.201.1224
brian.toy@comre.com

Gary Bullington 425.201.1213
gary.bullington@comre.com



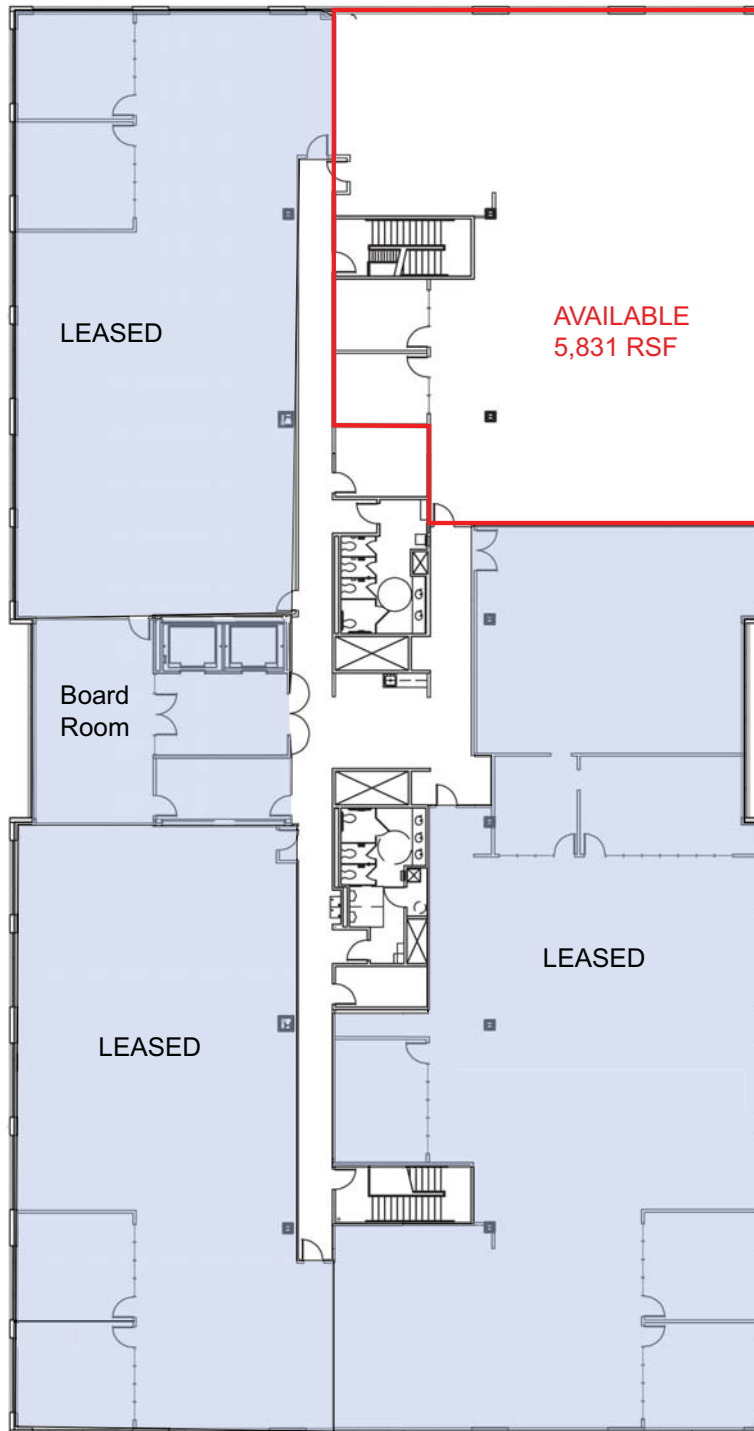
**CUSHMAN &
WAKEFIELD®**

COMMERCE
REAL ESTATE SOLUTIONS • COMRE.COM

INDEPENDENTLY OWNED AND OPERATED

10500 NE 8th Street, Suite 1125 | Bellevue, Washington 98004
Tel 425-455-4500 • Fax 425-453-5381 • comre.com

CYPRESS SEMICONDUCTOR BUILDING



marketed by:

Brian Toy 425.201.1224
brian.toy@comre.com

Gary Bullington 425.201.1213
gary.bullington@comre.com



CUSHMAN & WAKEFIELD

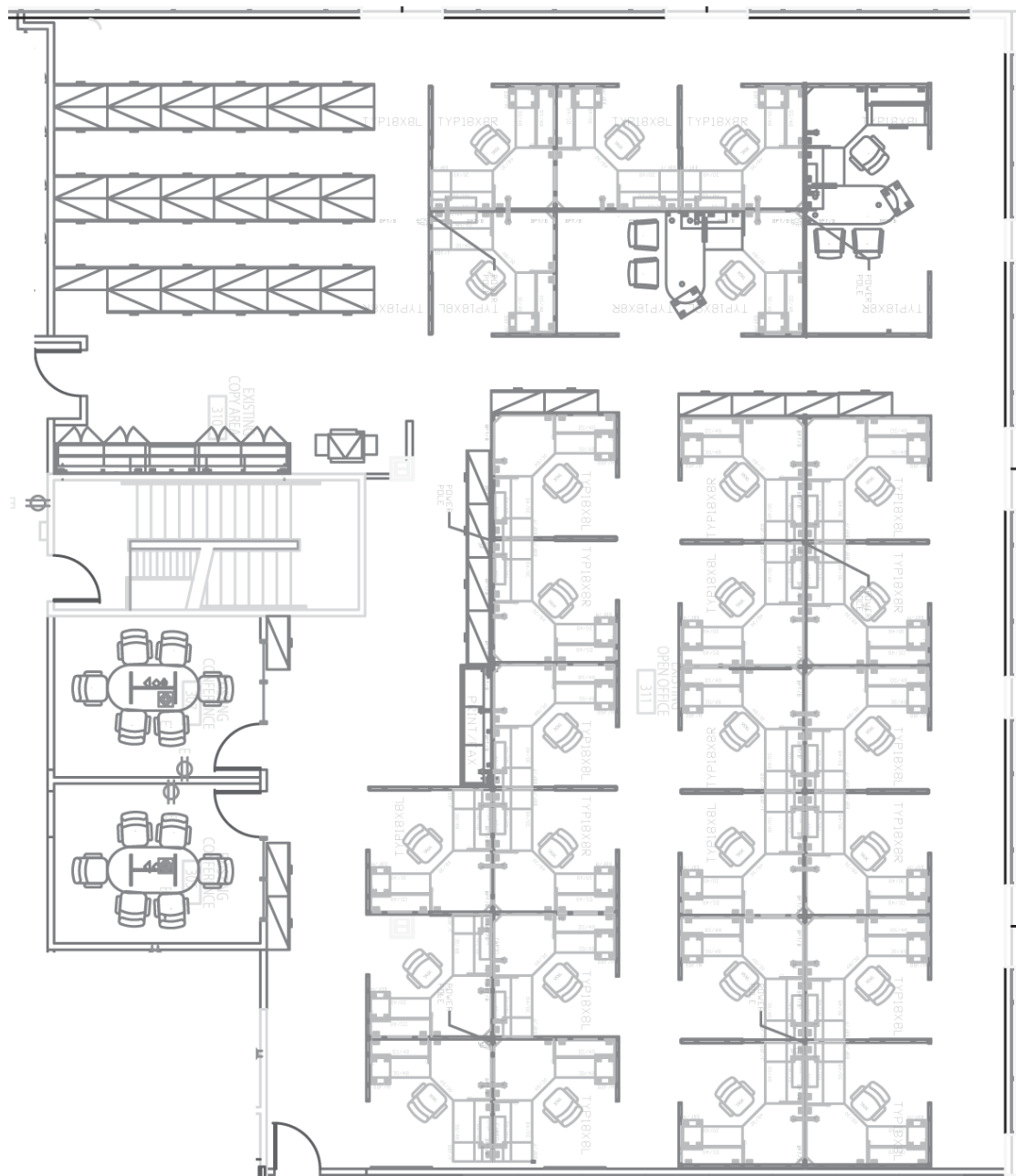
COMMERCE
REAL ESTATE SOLUTIONS • COMRE.COM

INDEPENDENTLY OWNED AND OPERATED

10500 NE 8th Street, Suite 1125 | Bellevue, Washington 98004
Tel 425-455-4500 • Fax 425-453-5381 • comre.com

CYPRESS SEMICONDUCTOR BUILDING

Furniture Layout (approx)
Chairs Not Included



marketed by:

Brian Toy 425.201.1224
brian.toy@comre.com

Gary Bullington 425.201.1213
gary.bullington@comre.com



**CUSHMAN &
WAKEFIELD®**

COMMERCE
REAL ESTATE SOLUTIONS • COMRE.COM

10500 NE 8th Street, Suite 1125 | Bellevue, Washington 98004
Tel 425-455-4500 • Fax 425-453-5381 • comre.com

©2011, Commerce Real Estate Solutions. Disclaimer: The above information is given with the obligation that all negotiations relating to the purchase, renting, or leasing of the property described above shall be conducted through **Commerce Real Estate Solutions**. No warranty or representation, express or implied, is made as to the accuracy of the information contained herein, and same is submitted subject to errors, omissions, change of price, rental or other encumbrances, withdrawal without notice, and to any special listing conditions imposed by the seller. Prospective buyers should conduct their own due diligence. Some aerial photography by DigitalGlobe or Aerials Express.